



**GOVERNMENT OF INDIA
MINISTRY OF RAILWAYS
RAILWAY BOARD**

No. 2021/Track-III/TK/12

New Delhi, Dtd. 2 .02.2024

Addressed to:
As per list attached.

Sub: Correction Slip No. 4 to Indian Railway Track Machine Manual (IRTMM-2019).

The Ministry of Railways (Railway Board) have decided to make correction/addition as indicated in the enclosed Correction Slip No. 4 to relevant para of Indian Railway Track Machine Manual-2019.

This has the approval of Board (AMCE).

Vijay
2.02.2024

**(VIJAY SINGH)
EXECUTIVE DIRECTOR TRACK (M & MC)
RAILWAY BOARD**

Tele: No. 011- 47845531

Email_ID : vijay.singh.2017@gov.in

**Room No. 150, First Floor, Rail Bhawan,
Raisina Road, New Delhi - 110 001.**

Copy to:

1. The Principal Director of Audit, All Indian Railways.
2. The Deputy Comptroller & Auditor General of Indian Railways, Room No. 224, Rail Bhawan, New Delhi.

List

The General Managers (Engg.)- CR, ER, ECR, ECoR, NR, NCR, NER, NFR, NWR, SR, SCR, SECR, SER, SWR, WCR, WR and Metro Railway/Kolkata.

The General Manager (Const.), N.F. Railway, Guwahati.

The CAO/Const. All Indian Railways.

PFA All Indian Railways.

The General Managers (Engg.) – ICF/Chennai, RCF/Kapurthala, DLW/Varanasi, CLW/Chittranjan, w&AP/Yelahanka, Bangalore & DMW/Patiala, MCF/Rai Bareilly, CORE/PRYJ

The Director General (Track), RDSO/Alambagh, Lucknow.
Chief Commissioner of Railways Safety, Lucknow.

Managing Director, IRCON, New Delhi.

Managing Director, RITES, New Delhi.

Managing Director, DMRC, Metro Bhawan, Barakhamba Lane, New Delhi.

Managing Director, CONCOR, New Delhi

Managing Director, RVNL, August Kranti Bhawan, Bhikaji Cama Place, New Delhi.

Managing Director, DFCCIL, Pragati Maidan, Metro Station, New Delhi.

Managing Director, PIPAVAV Railway Corp. Ltd., 1st Floor Jeevan Tara Building, Gate No. 4, Parliament Street, New Delhi.

Managing Director, MRVC, Church Gate, Station Building 2nd Floor, Mumbai - 400020

Managing Director, RLDA, IRCON Office Compound, Next to Safdarjang Rly. Station, Motibagh-I, New Delhi.

Managing Director, Konkan Railway Corporation Ltd., Belapur Bhawan, Sector-11, CBD belapur, Mumbai, Pin- 400614.

The Chief Project Officer, DMRC, Pragati Vihar, New Delhi.

Director General, IRICEN, Pune.

Director General, IRIEEN, Nasik.

Director General, IRISSET, Secunderabad.

Director General, IRIMEE, Jamalpur.

Director General, IRITM, Vill. Kanausi, Hardoi, Manik Nagar, Lucknow.

Director General, Railway Staff College, Vadodara.

Genl. Secretaries, AIRF, NFIR, IRPOF, FROA, AIRPFA, DAI (Railways) Rail Bhawan, New Delhi.

Copy to:

PPS to, Chairman & CEO, Member (Fin), Member (Infra), Member (T&RS), Member (O&BD) and Secretary.

PPS/PS to AM(CE), AM (Works), AM (PL), AM (F), AM (T), AM(Staff).
AM(L&A), PED (Infra), PED(Bridge), PED(Vig)

PEDTK (M&MC), EDCE (G), EDCE (P), EDCE (B&S) ED (W), ED(PIg), ED(WP), ED(INF), ED(L&A), ED(PSU), EDVE,

Correction Slip No. 4 to Indian Railway Track Machine Manual-2019

The Annexure 8.16 & 8.18 to para 810 of IRTMM-2019 shall be replaced as following:-

Annexure 8.16

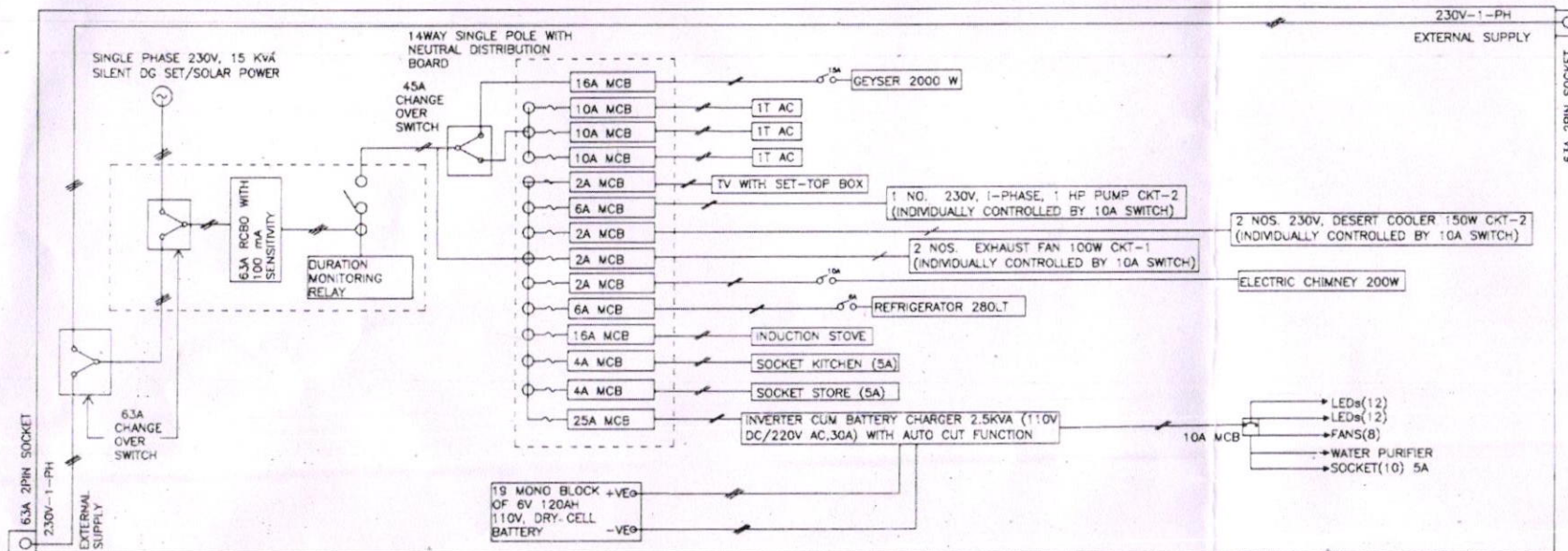
Amenities to be provided in Camping Coachs

S.No	Name of Item	Quantity
A. Kitchen Area		
1.	Fire extinguisher	02 nos.
2.	Commercial gas connection with double cylinder	01 set
3.	Four burner gas stove	01 nos.
4.	RO+UV water purifier	01 no.
5.	Refrigerator 210 L capacity	01 no.
6.	Dinner set	01 no.
7.	Thermos 02 l capacity	02 nos.
8.	Gas lighter	02 no.
9.	Presser cooker 5 L capacity Induction base	01 no.
10.	Presser cooker 3 L capacity Induction base	01 no.
11.	Casserole 10" dia.	04 nos.
12.	Bhagana copper base as per required sizes	04 nos.
13.	Plate steel 12" dia.	10 nos.
14.	Kadahee	02 nos.
15.	Spatula (karchhul) of various sizes	03 nos.
16.	Service spoon big	03 nos.
17.	Service spoon small	03 nos.
18.	Service bowl big	03 nos.
19.	Gripper	02 nos.
20.	Tea mug	12nos.
21.	Stainless steel spice box	01 no.
22.	Stainless steel container 2 L	06 nos.
23.	Stainless steel container for floor 15 L	01 no.
24.	Stainless steel container for rice 15 L	01 no.
25.	Stainless steel container for water 20 L	01 no.
26.	Stainless steel bucket 15 L	01 no.
27.	Hot chapatti case	02 nos.
28.	Sink	01 no.
29.	Stool for work	02 nos.
30.	Tea set	01 no.
31.	Tea strainer (stainless steel)-4"	01 no.
32.	Teaspoon	12 nos.
33.	Stainless steel utensil stand (wall hanging)	01 no.
34.	Stainless steel sauce-pan (copper base) 1 L	01 no.
35.	Hot plate iron (tawa) -12"with handle	01 no.
36.	Pastry board (chakla) 10"	01 no.
37.	Pastry roller (belna)	01 no.
38.	Fridge water bottle-1 L	6 nos.
39.	Dustbin	01 no.

S.No	Description	Quantity
B. LIVING AREA		
1.	LCD/LED television 40".	01 no.
2.	Satellite antenna for TV (DTH)	01 no.
3.	230VAC desert cooler 150 W	02nos.
4.	1 ton AC unit	03 nos.
5.	Laptop	01 no.
6.	Foldable tubular chairs	06 nos.
7.	Folding tables 1000x500 mm.	03 nos.
8.	Wooden centre Table 1000X500 mm.	01 no.
9.	Radio/audio player	01 no.
10.	Pillow Durafoam/Sleepwell	10 nos.
11.	Pillow cover	20 nos
12.	Curtain	One each window
13.	Bed sheets (single bed)	20 nos.
14.	Mosquito net	10 nos.
15.	Woolen blanket (Raymond)	10 nos.
16.	Sofa	One 3 seater as per the space available
17.	Insulated water jug 10L capacity	02 nos.
C. BATH AREA		
1.	Geyser 20 L capacity	01 no.
2.	Bucket 20 L capacity	06 nos.
3.	Mug	02 nos.
4.	Aluminum/stainless steel stool	02 nos.
D. STORE		
1.	Welding set 5kva	01 no.
2.	Water lifting pump	02 nos.
3.	Portable drilling machine	01 no.
4.	Portable grinding machine	01 no.
5.	Diesel filling pump	01 no.
6.	Silent DG set 15 kva	01 no.
7.	Folding cot (single bed)	06 nos.

ELECTRICAL CIRCUIT DIAGRAM OF CAMPING COACH

Annexures 8.18



NOTE-

1. COACH BODY TO BOGIE, BOGIE TO AXLE AND EACH ELECTRICAL EQUIPMENT SHALL BE SOLIDLY EARTH AT MINIMUM TWO POINTS.
2. 230V, 3 PINS/15A & 5A PLUG WITH SOCKET OF APPROVED MAKE (RDSO/IC/RCF/MCF) SHALL BE USED.
3. 230V. CABLES IN SUPER STRUCTURE AND UNDER FRAME SHALL BE LAID IN FLEXIBLE POLYAMIDE CONDUITS. POLY AIMED CONDUITS AND ITS ACCESSORIES SHALL BE, AS PER RDSO SPECIFICATION NO. RDSO/PE/SPEC/AC/0138-2009 (REV-1) OR LATEST.
4. DISTRIBUTION BOX AS IN AC COACH SHALL BE PROVIDED IN PLACE OF EXISTING DISTRIBUTION FUSE BOARD, SO THAT 230V AC WIRING CAN BE DONE.
5. "SYSTEM SPECIFICATION AND CODE OF PRACTICE FOR WIRING FOR 110V DC SELF GENERATION TRAIN LIGHTING SYSTEM" NO.EL/TL/48-2005(REV-1) AND "CODE OF PRACTICE FOR TRAIN LIGHTING MAINTENANCE ON PREVENTION OF FIRE" NO. EL/TL/56 SHALL BE STRICTLY FOLLOWED FOR WIRING CIRCUIT OF INVERTER CUM BATTERY CHARGER.
6. CODE OF PRACTICE FOR PREVENTION OF FIRE IN AC COACHES NO. RDSO/PE/O/0008-2005 (REV-0) FOR 230V. WIRING SHALL BE FOLLOWED.
7. ALL CABLES SHALL BE E-BEAM AS PER RDSO SPECIFICATION NO. ELRS/SPEC/ELC/0019 (REV-4) OR LATEST.
8. NO PROTECTION DEVICE SHALL BE BY PASSED IN ANY CONDITION.
9. ALL ELECTRICAL APPLIANCES OF REPUTED MAKE SHALL BE PROVIDED.
10. NO HEATER/ROOM HEATER TO BE CONNECTED IN ANY POWER POINT.
11. DG SET AS WELL AS COACH PANEL SHALL BE OPERATED BY A QUALIFIED ELECTRICIAN.
12. 8 NO. DCP TYPE FIRE EXTINGUISHERS TO BE PROVIDED IN CAMPING COACH.
13. ALL EQUIPMENTS/MATERIALS SHALL BE FIRE RETARDANT, SUITABLE FOR ROLLING STOCK APPLICATIONS AND AS PER APPROVED SOURCE OF RDSO/PU's.
14. FOR HIGH POWER INDUCTIVE LOAD C TYPE MCB AND RESISTIVE LOAD B TYPE MCB SHALL BE USED.

CABLE SIZE 2.5 SQ. MM 4 SQ. MM 25 SQ. MM

NOTES	ELRS/SPEC/0019 REV-4	NTS	SYMBOL	DESCRIPTION	AUTHY
	E-BEAM SPECIFICATION NO.	SCALE	ALT		

DR. BY: S.DAYAL
CH. BY: V.P.SRIVASTAVA
PLT BY: A.K.SINGH
COM BY: D.G.SHARMA
APPROVED BY: [Signature]
ARE/TM(PN)
DTM-VI

R.	D.	S.	O.
REF:EL/6.9.12/SYSTEM			
GENERAL SCHEMATIC SINGLE LINE WIRING DIAGRAM FOR CONVERSION OF CS, SCN AND FIRST CLASS NON-AC COACHES INTO CAMPING COACH (WITH 15KVA DG SET, 230V AC SUPPLY AND INVERTER CUM BATTERY CHARGER (110V DC/220V AC, 30A) WITH AUTO CUT FUNCTION)			
CANC./SUPD/REVED: REV-1			
DRG. NO. RDSO/TM/07/2023 (REV-1)			

21.9.23
ED/TM