

Government of India
Ministry of Railways
(Railway Board)

**A COMPENDIUM OF
STATISTICAL INFORMATION ON
MATERIALS MANAGEMENT- 2023**

ISSUED BY STORES DIRECTORATE

PREFACE

Compendium of Statistical information on the performance of the Materials Management Department on the Railways was first brought out in the year 1977.

The compendium was welcomed by all and was found to be extremely useful in the Railways to readily obtain the vital statistics on Materials Management. Further healthy competitive spirit was generated all round, apprising the staff at all levels towards better productivity.

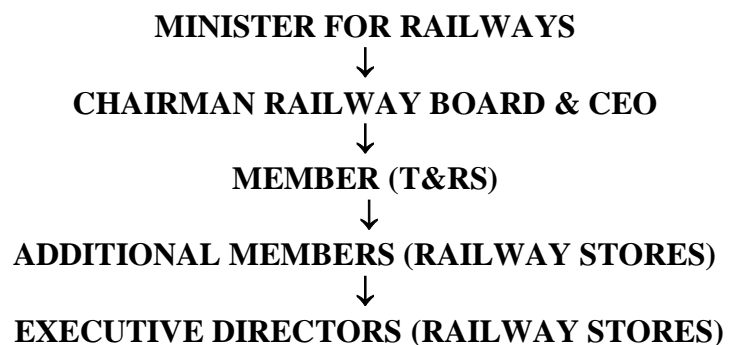
The compendium has since been published every year and presents an account of responsibilities and results by the Materials Management Department, in fulfilling the prime objective of maximum service with minimum inventories.

All suggestions for improvement of the Compendium are welcome.

Additional Member (Rly. Stores)
Ministry of Railways
Railway Board

CONTENTS

Statement No.	Subject	Page No.
	Preface	(i)
	Organization Chart	(ii)
	Introduction	1-2
I	Vital statistics pertaining to Indian Railways indicating the growth and its impact on inventory/materials management.	3
II	Purchase of fuel/Stores and other supplies	4
III	Purchases	5
IV	Imported and indigenous content of Railways purchases	5
IV A	Purchases by the Railways	6
V	Total purchases and sources of procurement	7
VI	Distribution Depots on Railways	7
VII	Total Purchases including fuel	8
VIII	Total Staff strength on the Railways stores depot vis-a-vis on the Railways as on 31.3.2022 and 31.3.2023.	9
IX (A-C)	Break up of staff of stores deptt. Permanent/Temporary	10-12
X	Inventory balances on Railways/Production Units (Discontinued due to Pink Book (Pt.-I) has not been published 2020-21 onwards)	13
XI	Inventory balances on Zonal Railways/Production Units as on 31.3.2022 and 31.3.2023.	14
XI A	Statement of stores balances and issues during 31.3.2022 and 31.3.2023	15
XI B	Statement of inventories Net during 2022-23	16
XI C	Purchase Suspense on Railways/Production Units	17
XII	Excess/Savings under Inventories over budget estimates (Discontinued due to Pink Book (Pt.-I) has not been published 2020-21 onwards)	18
XII A	Ratio of WMS Balances (in % to credit)	19
XIII	Efficiency indicator turn over percentage of Stores balances to issues.	20
XIV	Turn over percentage on Zonal Railways and Production Units.	21
XV	Turn over percentage of total inventories to the total production value in the production units.	22
XVI	Value of surplus stores as per appropriation accounts	23
XVII	Value of Stores Transactions during 31.3.2022 and 31.3.2023 and balances held on 31st March, respectively.	24
XVII (A)	Value of Scrap Sold	25
XVIII	Discontinued.	26
XIX	Printing & Stationary organization and statistics thereof (Discontinued from the year 2022-23 onwards vide Board's letter No. 2017/RS/Ptg.&Sty./AP/PP/IR dated 03.05.2023)	27



Policy Directive to Zonal Railways & Production Units & Co-ordination	Diesel, Elec. Loco, EMU Car Shed Depots Scrap Yard	IRON & STEEL CELL KOLKATA	Liaison with other Ministries
↓	Cutting up Yards for Condemned rolling stock		
General Manager	Printing Press		
↓			
Principal Chief Material Manager		Liaison with steel Plants for Supply of steel to Railways and Production Units.	
Purchase (HQ) Organization	Computerization		
Inventory Control (HQ) Cell	CENTRALISED PURCHASE		
		INVENTORY CONTROL	
Budgetary Control	Rolling Stock (Complete units)	↓	
Sales Organization	POL, Steel, Wheels, Axles		
		Monitoring of inventory Performance & issue of policy Directives.	
General Depot			
Workshop Depots			

INTRODUCTION

<p>The efficiency of a management particularly, in a vast organization like Railways largely depends upon the effective utilization of resources viz. men, materials money and machines. Of these, money and materials, are to a substantial extend managed by the Stores Department. It has been well recognized that efficient information system that monitors the utilization of resources is so vital to an undertaking that it can be considered as the fifth resource.</p> <p>This booklet attempts to bring in the vital information that will project realistically the work done by the Materials Management Organization (the Stores Department) on the Railways and presents a comparative picture of the growth over the last few years. The far reaching changes that have been brought about in this department in the procedures, methods of management and its efficiency have been demonstrated through this compendium. From a small organization with purchase of Rs 82 crores in 1950-51, the department has phenomenal growth over the years, the purchases touching Rs.64957 crores in 2022-23.</p> <p>The Inventory Control method and the Data Processing Techniques adopted have amply demonstrated the efficient management of resources without in any way affecting the service level for the various activities viz. repairs, maintenance, construction and production of new rolling stock. The performance of the consuming departments is an indirect indication of the efficiency with which the supply lines have been kept up.</p> <p>Statement No. I This Statement demonstrates the growth of the Indian Railways in respects of the Capital at charge, the number of rolling stock assets the traffic handled and the corresponding stores purchased and the effect of the successive percentage of stores balances to the Annual Issues have been brought down from about 75% in the beginning of the first Plan to 4% at present, in spite of increase of purchases from Rs, 82 crores to Rs. 64957 crores.</p>	<p>Statement No. II. A broad classification of purchase expenditure fuel, operation/maintenance of rolling stock, production of rolling stock, is given in this statement.</p> <p>Statement No. III This Statement indicates the gradual reduction of the percentage of value of stores imported over the years. This reduction has been achieved in spite of the tremendous modernization that has been taken place on the Indian Railways in the methods of traction, sophisticated signaling communication. Efforts towards indigenization of the imported stores are continuing with the necessary vigour.</p> <p>Statement No. IV This statement shows the spectrum of stores purchased by the Railways from year to year along with the value of imported stores. From the year 1980 the exclusive items of the Railway previously procured through Ministry of Supply are being procured by the Railways, part of them centrally through the Railway Board.</p> <p>Statement No. IVA- This Statement indicates the value of stores imported direct and purchased in India and the value of stores of Indian manufacture of indigenous origin.</p> <p>Statement No. V- This statement indicates total purchases made and the sources of procurements along with percentage viz. directly by Railways themselves, Railway Board and through GeM.</p> <p>Statement No. VI- This Statement shows the number of stores Depots on the various Zonal Railways along with the number of items stocked.</p> <p>The distribution of major, medium and small depots is also indicated. This includes only the depots under the control of the Stores Department.</p>
---	--

<p>Statement of No. VII- This Statement indicates the value of purchases routed through stores Department.</p> <p>Statement No .VIII- This statement indicates the staff strength on the Railway including Production Units category-wise in juxta-position to that in the Stores Department.</p> <p>Statement No .IX- The distribution of the staff given in statement VIII on the Zonal Railways and their break-up in various categories/classification is presented in this statement.</p> <p>Statement No. X-The Inventory Balances on Railways and Production Units has been discontinued due to Pink Book (Pt.-I) has not been published 2020-21 onwards).</p> <p>Statement No XI- This statement indicates the inventory balances as on 31.3.2022 to 31.3.2023 in respect of various Zonal Railways and the Production Units.</p> <p>Statement No. XI-A - This Statement indicates the Stores Balances and Issues during 2021-22 & 2022-23.</p> <p>Statement No. XI-B- This statement indicates the inventories during 2022-23 actual vis-a-vis RE 2022-23.</p> <p>Statement No. XI-C This Statement gives the detailed position of outstanding Purchase Suspense Railway-wise for the last three years.</p> <p>Statement No. XII- Excess/Savings under Inventories over budget estimates has been discontinued due to Pink Book (Pt.-I) has not been published 2020-21 onwards).</p> <p>Statement No. XII-A This statement shows ratio of WMS balance (in%) to credit (WMS Norms).</p>	<p>Statement No. XIII- The efficiency indicator viz., the turn over percentage of stores balances to annual issues as presented in the Statement both in terms of balances with fuel and without fuel given in this statement.</p> <p>Statement No. XIV. The break-up of the turn-over-ratio in various Railways is presented in this statement for purpose of inter-railway comparison.</p> <p>Statement XV -In respect of Production Units which are the major workshop, this statement indicates the turnover percentage with respect to the total production value as generally worked out in a manufacturing organization.</p> <p>Statement XVI- This statement indicates the comparative position of Surplus Stores on the Railways for the last 3 years period.</p> <p>Statement No. XVII- This statement indicates the value of Stores transactions for last 2 years .</p> <p>Statement No. XVII-A The performance of Railways in regard to Stores Transactions and the scrap held at the end of the financial year is given in this statement.</p> <p>Statement No. XVIII- The statement regarding distribution of uniforms on Indian Railways has been discontinued. Supply of Uniforms to all eligible employees has been discontinued vide Railway Board letter no. PC-VII/2017/I/7/5/7 dated 03.10. 2017.</p> <p>Statement No. XIX- The value of Assets, productivity raw material used and the value of production of the Printing Presses of the Zonal Railways has been discontinued from the year 2022-23 onwards vide Board's letter No. 2017/RS/Ptg.&Sty./AP/PP/IR dated 03.05.2023.</p>
---	---

STATEMENT-I

VITAL STATISTICS PERTAINING TO INDIAN RAILWAYS INDICATING GROWTH & ITS IMPACT ON INVENTORIES/MATERIALS MANAGEMENT

Assets	2015-16	2016-17	2017-18	2018-19	2019-20	2020-21	2021-22	2022-23
Capital at Charge(In Cr. Of Rs.)	275135	302458	324726	348602	374592	387690	466719	572920
Total Investment(In Cr. Of Rs.)	419124	471776	517324	573642	640408	670726	809919	972734
Rolling stock-locomotives								
Steam	39	39	39	39	39	39	39	39
Diesel	5869	6023	6086	6049	5898	5108	4747	4730*
Electric	5214	5399	5639	6059	6792	7587	8429	9565
Coaching Stock								
Passenger Carriages	53140*	53638	54059	55258	57121	58778	63284	64658*
Electric Multiple Unit Coaches	10210	10617	11246	12315	13234	12956	13953	13624*
Rail Cars	31	30	21	24	23	18	15	13*
Other Coaching Vehicles	6704*	6699	6499	6406	6611	7949	10159	11419*
Wagons	251295*	277992	279308	289175	293011	302624	318883	315103*
Volume Traffic- Passengers								
Traffic								
Passengers Kms.(In Million)	1143039	1149835	1177699	1157174	1050738	231126	590217	958919
Goods Traffic-								
Tonnes originating(In Million)								
Total Traffic	1108.62	1110.95	1162.64	1225.29	1212.22	1233.85	1418.84	1510.76
Net Tonnes Kms.(in Million)								
Total Traffic	655605	620858	693281	738923	708034	720054	872112	959888
Qty. of Fuel consumed by Locos								
Coal(in thousands of Tonnes)	1	1	1	1	1	1	1	0
Diesel Oil(In Kilolitres)	2874950	2792963	2778431	2749003	2379865	1131200	1462710	1438420
Electric(KMWH)	15701	15666	16634	17682	18410	14092	17757	22086*
Stores Purchases(In Cr. Of Rs.)								
Indigenous	41802	41854	48494	61078	63052	49640	48055	64648*
Total	43131	43347	49484	62134	63844	50092	48714	64957*
Operating Review & Exp.(in cr. Of Rs.)								
Revenue-gross receipts	168380	165382	178930	190507	174695	140784	191206	239983
Working expenses & Misc. expenses	149151	160469	177264	186734	173105	138236	206231	237465
Dividend to General revenue	8723	0	0	0	0	0	0	0
Surplus(+) Deficit(-)	10505.97	4913	1666	3774	1590	2547	-15025	2517
Stores Balances at the end of yr.(in Cr. of Rs.)	3684	2869	2917.5	2727.96	2885.27	1956.47	813.97	2578.38
Annual Issues from stores depots(with fuel)	32801	31318	37341.03	46195.64	49673.76	32613.82	45087.62	54823.47
Turnover % of stores balance to annual issues	11%	9%	8%	6%	6%	6%	5%	4%

Source of information:(1) Indian Railway Annual Report & Accounts 2022-23 & Indian Railway Year Book 2022-23 , *revised

PURCHASE OF FUEL STORES AND OTHER SUPPLIES (St.II)

(Values in Crores of Rs)

		2020-21			2021-22			2022-23		
		IMPORTED	INDIGENOUS	TOTAL	IMPORTED	INDIGENOUS	TOTAL	IMPORTED	INDIGENOUS	TOTAL
1	Steam loco parts & Fittings	0.00	67.71	67.71	0.00	48.77	48.77	0	3.59	3.59
2	Diesel loco parts & Fitting	71.66	6248.12	6319.78	1.51	1007.43	1008.94	4.58	1115.55	1120.13
3	Electric loco parts & Fitting	147.11	7269.55	7416.66	80.73	10388.10	10468.83	22.198	12095.42	12117.62
4	Carriage, Wagon, EMU parts & fittings	192.00	14145.64	14337.64	159.00	15331.24	15490.24	235.3513	17017.22	17252.57
5	Electric Stores	0.48	1276.59	1277.07	0.00	1315.35	1315.35	1.27	2435.78	2437.05
6	Signal & Telecommunication Stores	0.00	986.24	986.24	0.00	1334.56	1334.56	0	1944.34	1944.34
7	P.W. materials	1.13	356.51	357.64	0.00	2461.52	2461.52	0	3057.12	3057.12
8	Engineering Stores	0.24	323.01	323.25	3.00	426.14	429.14	0.71	466.17	466.88
9	Abrasives, tools, hardwares etc.	0.00	75.65	75.65	0.01	89.96	89.97	0.59	122.32	122.91
10	Brushes, Brushware etc.	0.00	10.13	10.13	0.00	16.89	16.89	0	10.47	10.47
11	India rubber leather canvas etc.	0.02	118.09	118.11	0.03	139.09	139.12	0	225.88	225.88
12	Electrodes and welding accessories	0.00	62.77	62.77	0.00	91.05	91.05	0	145.02	145.02
13	Paints, enamel and varnishes	0.00	122.02	122.02	0.02	157.37	157.39	0	231.92	231.92
14	Crockery, cutlery, napery	0.00	33.34	33.34	0.00	18.33	18.33	0	61.61	61.61
15	Cloth, clothing etc.	0.00	122.29	122.29	0.02	125.63	125.65	0	451.42	451.42
16	Petroleum Products	0.00	631.49	631.49	0.07	289.94	290.01	0	1700.47	1700.47
17	Refractories, Packing materials etc.	7.80	65.86	73.66	0.74	87.12	87.86	13.28	155.60	168.88
18	Ball and roller bearing	0.00	102.90	102.90	0.04	72.52	72.56	0.18	96.86	97.04
19	General Stores, acids, chemicals etc.	30.01	512.57	542.58	22.20	467.99	490.19	30.5765	634.99	665.57
20	Stationery, forms etc	0.25	163.07	163.32	1.08	77.92	79.00	0.3	125.44	125.74
21	Metal ferrous	0.18	668.68	668.86	0.21	975.32	975.53	0	1572.64	1572.64
22	Metal non-ferrous	0.00	51.53	51.53	0.00	81.43	81.43	0	41.09	41.09
23	Coal Coke	0.00	714.20	714.20	0.00	1145.94	1145.94	0	36.21	36.21
24	Fuel: Oil	0.00	7222.62	7222.62	0.11	7794.90	7795.01	0	18925.87	18925.87
25	Timber	0.00	100.52	100.52	0.00	168.68	168.68	0	47.42	47.42
26	Scrap	0.00	636.80	636.80	0.00	712.78	712.78	0	863.54	863.54
27	Complete Units of Rolling Stock	0.00	5286.96	5286.96	0.00	2536.94	2536.94	0	779.32	779.32
28	Other stores	2.31	2264.40	2266.71	390.11	691.99	1082.10	0	284.53	284.53
29	Total	453.19	49639.26	50092.45	658.87	48054.90	48713.77	309.04	64647.81	64956.85

Source: Annual Statistical Statement 2022-23 Statement-38 -A & 38-B

(4)

Statement III					Statement IV						
PURCHASES BY RAILWAYS					IMPORTED AND INDIGENOUS CONTENT OF RAILWAYS PURCHASES						
Value in Crores of Rs.					YEAR	Total Purchases	Indigenous		Imported (including Customs Duty)		
Year	Fuel for operation	Other Stores for operation, maintenance & Constructions	Material for manufacture & Purchase of complete units of Rolling Stock	Grand Total		Rs. In Crores	Rs. In Crores	Percent	Rs. In Crores	Percent	
1	2	3	5	6		1	2	3	4	5	6
2011-12	10273	9295	11791	31359		2011-12	31359	30176	96	1183	4
2012-13	12558	9394	14075	36027		2012-13	36027	33780	94	2247	6
2013-14	14666	10505	17276	42447		2013-14	42447	40258	95	2189	5
2014-15	15304	12268	15192	42764		2014-15	42764	41351	97	1413	3
2015-16	13035	13145	16951	43131		2015-16	43131	41801	94	1330	3
2016-17	11949	12667	18731	43347		2016-17	43347	41853	97	1494	3
2017-18	14925	14547	20012	49484		2017-18	49484	48494	98	990	2
2018-19	16565	16380	29189	62134		2018-19	62134	61126	98	1008	2
2019-20	14050	20708	29085	63843		2019-20	63843	63052	99	791	1
2020-21	7285	13917	28890	50092		2020-21	50092	49639.3	99	453	1
2021-22	10362	15873	22479	48714		2021-22	48714	48055	99	659	1
2022-23	19228	21054	24675	64957		2022-23	64957	64648*	99	309	0
Source:Indian Railways Year Book 2022-23					Source:Indian Railways Annual Statistical Statement 2022-23 (*revised)						
5											

statement IV-A

PURCHASE OF FUEL STORES AND OTHER SUPPLIES

(value in crores of Rs.)

	2020-21			2021-22			2022-23		
Rly./PUs.	IMPORTED	INDIGENOUS	TOTAL	IMPORTED	INDIGENOUS	TOTAL	IMPORTED	INDIGENOUS	TOTAL
CR	4.54	2557.16	2561.70	4.82	2124.93	2129.75	0.00	2805.51	2805.51
ER	4.62	2832.95	2837.57	11.08	2535.12	2546.20	0.66	3160.14	3160.80
NR	13.50	8170.10	8183.60	50.44	2849.42	2899.86	13.38	3639.90	3653.28
NER	0.00	1099.78	1099.78	3.06	1048.25	1051.31	0.00	1679.52	1679.52
NFR	0.00	968.68	968.68	0.00	1205.12	1205.12	0.00	1727.14	1727.14
SR	5.28	2963.56	2968.84	2.88	2150.83	2153.71	2.59	4527.38	4529.97
SCR	2.06	1839.07	1841.13	2.75	1250.83	1253.58	0.00	4771.95	4771.95
SER	0.10	4095.27	4095.37	2.28	1978.76	1981.04	0.00	2589.39	2589.39
WR	2.20	1682.39	1684.59	89.93	2428.53	2518.46	3.53	3574.52	3578.05
ECR	0.15	795.96	796.11	0.00	1605.83	1605.83	0.21	1798.34	1798.55
ECoR	1.03	1779.01	1780.04	0.22	1554.72	1554.94	6.73	1607.71	1614.44
NCR	0.00	484.09	484.09	0.00	614.94	614.94	0.00	895.12	895.12
NWR	52.02	1303.08	1355.10	238.16	1880.23	2118.39	0.00	2922.01	2922.01
SECR	0.00	652.57	652.57	0.00	502.35	502.35	0.00	1396.54	1396.54
SWR	0.08	877.07	877.15	0.88	1404.98	1405.86	0.65	2060.76	2061.41
WCR	0.00	717.54	717.54	0.00	712.35	712.35	0.00	1020.69	1020.69
MR	1.09	25.67	26.76	0.07	34.22	34.29	0.00	160.00	160.00
TOTAL	86.67	32843.95	32930.62	406.57	25881.41	26287.98	27.75	40336.62	40364.37
CLW	93.77	2975.67	3069.44	54.89	4308.64	4363.53	14.80	4473.39	4488.19
BLW	62.73	2820.38	2883.11	11.70	2972.48	2984.18	4.58	3653.69	3658.27
ICF	91.77	4108.20	4199.97	37.99	5721.31	5759.30	124.00	6250.21	6374.21
RWF	37.11	633.04	670.15	72.82	819.48	892.30	38.16	1132.12	1170.28
PLW	9.77	1174.35	1184.12	2.71	1819.74	1822.45	2.11	2622.63	2624.74
RCF	70.88	2430.14	2501.02	53.51	3181.45	3234.96	90.51	3308.71	3399.22
MCF	0.44	2544.78	2545.22	18.68	3239.45	3258.13	-0.02	2652.86	2652.84
RWP	0.05	108.75	108.80	0.00	110.94	110.94	7.15	217.19	224.34
Total	366.52	16795.31	17161.83	252.30	22173.49	22425.79	281.29	24310.80	24592.09
G.TOTAL	453.19	49639.26	50092.45	658.87	48054.90	48713.77	309.04	64647.42	64956.46

Source- Indian Railways Annual Statistical Statement 2022-23 Statement No 38

(6)

Statement No V				
TOTAL PURCHASES AND SOURCES OF PROCUREMENT				
YEAR	Total Purchases in Crs of Rs.	Sources through which procurement made		
		Railway Direct	Railway Board	GeM
2010-11	29099	53%	45%	2%
2011-12	31359	53%	45%	2%
2012-13	36027	52%	46%	2%
2013-14	42447	48%	50%	2%
2014-15	42764	51%	48%	1%
2015-16	43131	70%	27%	3%
2016-17	43347	70%	28%	2%
2017-18	49484	62%	35%	3%
2018-19	62134	63%	36%	1%
2019-20	63843	78%	22%	0%
2020-21	50092	73%	27%	0%
2021-22	48714	78%	22%	0%
2022-23	64957	66%	31%	3%

Source-Indian Railway's Year Book 2022-23

7

statement No.VI									
DISTRIBUTION OF DEPOTS ON RAILWAYS DURING 2022-23									
S.No	Railway/Production Unit	Total No. of stock items	No. of depots having issues over Rs.100 crs	No. of depots having issues over Rs.50 crs & upto Rs.100 crs	No. of depots having issues over Rs. 25 Crs & upto Rs.50 crs.	No. of depots having issues over Rs.10 crs & upto Rs.25 Crs	No. of depots having issues over Rs.5 Cr & upto Rs. 10 Crs	No. of depots having issues over Rs.1 Crs& upto Rs. 5 Crs	No. of depots having issues less than Rs.1 Cr
1	CR	4948	2	3	9	6	4	1	0
2	ER	5772	6	0	0	2	1	2	0
3	NR	6253	2	2	2	9	4	4	3
4	NER	4665	2	0	0	2	0	1	1
5	NFR	8049	1	1	3	0	2	2	2
6	SR	6242	4	5	3	8	1	2	2
7	SCR	5841	3	1	2	5	1	4	0
8	SER	3987	2	5	5	7	2	2	2
9	WR	6460	3	0	5	8	1	5	2
10	ECR	5185	1	2	4	2	2	2	3
11	ECoR	4365	1	1	3	1	0	0	0
12	NCR	5403	1	0	3	5	1	0	3
13	NWR	7028	1	2	2	4	3	0	1
14	SECR	4399	1	1	3	2	2	2	0
15	SWR	3480	0	2	4	0	1	0	0
16	WCR	3601	2	1	2	4	0	1	1
17	MR	255	0	0	0	0	1	0	0
18	CLW	2972	3	0	1	1	2	0	1
19	BLW	8736	2	0	0	0	1	0	0
20	PLW	3853	2	0	0	0	0	0	0
21	ICF	5735	3	0	0	0	0	0	0
22	RCF	5663	2	0	0	0	0	0	0
23	RWF	2183	1	0	0	0	0	0	0
24	MCF	3253	2	0	0	0	0	0	0
25	RWP	213	1	0	0	0	0	0	0
26	RDSO	343	0	0	0	0	0	0	0
	Total	118884	48	26	51	66	29	29	21

Source-Information from IMMS

7

STATEMENT INDICATING PURCHASES UNDER STORES SUSPENSE HEAD						Statement VII
Railways	(Value in Crores of Rs.)					
	G.P.Stores including Fuel 2021-22	G.P.Stores only 2021-22	G.P.Stores including Fuel 2022-23	G.P.Stores only 2022-23	G.P.Stores including Fuel 2023-24 (BE)	G.P.Stores only 2023-24 (BE)
CR	1279.68	618.82	1908.96	788.36	2278.79	948.98
ER	964.65	735.88	1289.43	920.23	1341.74	933.72
NR	3161.37	1828.74	3779.99	1046.51	3022.50	1200.00
NER	932.90	377.86	1634.16	1111.46	1165.00	700.00
NFR	1134.81	215.61	1894.48	339.43	1723.41	454.48
SR	815.00	608.71	1097.36	710.55	1426.37	908.64
SCR	1292.66	540.73	2444.14	679.52	2426.66	820.07
SER	664.35	557.78	1079.65	942.80	1412.00	1235.00
WR	1402.10	515.28	2304.21	611.57	2292.42	727.92
ECR	517.69	243.67	718.05	438.07	991.00	541.00
ECoR	515.24	181.44	610.12	238.68	680.00	280.00
NCR	479.59	323.71	722.03	514.29	915.98	550.63
NWR	1918.73	275.46	2805.26	392.94	3037.58	438.50
SECR	422.38	244.83	668.29	397.18	694.85	352.61
SWR	1906.40	492.09	1961.53	294.90	2368.55	548.55
WCR	510.67	357.07	740.44	534.37	958.82	675.00
MR	14.07	14.07	7.06	7.06	26.50	26.50
Total	17932.29	8131.75	25665.16	9967.92	26762.17	11341.60
CLW	4318.65	4318.65	4208.98	4208.98	4300.00	4300.00
BLW	3261.33	3261.33	3827.55	3827.55	4175.00	4175.00
ICF	5187.87	5187.87	5518.32	5518.32	12220.00	12220.00
RWF	708.44	708.44	1154.66	1154.66	1527.81	1527.81
PLW	1773.92	1773.92	2548.34	2548.34	2542.61	2542.61
RCF	3234.96	3234.96	3380.04	3380.04	4917.14	4917.14
MCF/RBL	2878.99	2878.99	2920.58	2920.58	4884.98	4884.98
RWP	144.20	144.20	169.15	169.15	262.00	262.00
Total PUs	21508.36	21508.36	23727.62	23727.62	34829.54	34829.54
Grand Total	39440.65	29640.11	49392.78	33695.54	61591.71	46171.14

Source: Pink Book (Part-II) 2020-21 & 2021-22 , 2021-22 (Actual) & 2023-24(BE- Total (P-8)

TOTAL STAFF STRENGTH OF STORES DEPARTMENT VIS-A-VIS THE RAILWAYS				
	Staff of Stores Department(Nos)		Total Staff (Nos)	
	2021-22	2022-23	2021-22	2022-23
Group A & B				
(a) Directly Recruited	414	399	10306	9844
(b) Promoted	370	335	8016	7971
Total Group A&B	784	734	18322	17815
Group -C				
(a)Workshop/Artisan Staff Highly Skilled, Semiskilled, Supervisory	1967	2163	123701	120339
(b) Running Staff	0	0	147548	149026
(c)Others	13494	12393	923311	902435
Total Group C	15461	14556	1194560	1171800
Group D				
(a) Semi-skilled & Unskilled	0	0	0	0
(b) Running Staff	0	0	0	0
(c)Others	0	0	0	0
IV Total Group D	0	0	0	0
GrantTotal (all categories)	16245	15290	1212882	1189615
Based on Indian Railway Annual Statistical Statement No.40(III) 2020-21, 2021-22 and 2022-23, (P-9)				

STATEMENT No.IX										
BREAK-UP OF STAFF OF STORES DEPT. PMT./TEMPORARY AS ON 31ST MARCH 2021										
Rly./PUs	GROUP A & B			GROUP C			GROUP D			GRAND TOTAL
	Directly recruited	Promoted	Total	Workshop artisans	Others	Total	Semi-Skilled & unskilled	Others	Total	
CR	42	14	56	223	993	1216	0	0	0	1272
ER	25	33	58	193	1787	1980	0	0	0	2038
NR	16	47	63	2	1990	1992	0	0	0	2055
NER	11	15	26	1	706	707	0	0	0	733
NFR	10	23	33	1	780	781	0	0	0	814
SR	12	31	43	62	904	966	0	0	0	1009
SCR	17	23	40	153	898	1051	0	0	0	1091
SER	16	22	38	6	1125	1131	0	0	0	1169
WR	68	14	82	5	989	994	0	0	0	1076
ECR	15	18	33	2	569	571	0	0	0	604
ECoR	14	12	26	56	175	231	0	0	0	257
NCR	25	12	37	11	603	614	0	0	0	651
NWR	15	20	35	0	606	606	0	0	0	641
SECR	17	10	27	0	427	427	0	0	0	454
SWR	11	13	24	12	477	489	0	0	0	513
WCR	22	10	32	1	502	503	0	0	0	535
Metro	1	6	7	0	70	70	0	0	0	77
CLW	14	10	24	212	358	570	0	0	0	594
BLW	9	14	23	513	11	524	0	0	0	547
ICF	11	16	27	0	426	426	0	0	0	453
RWF	8	6	14	124	131	255	0	0	0	269
PLW	8	11	19	203	5	208	0	0	0	227
RCF+MCF	33	16	49	180	277	457	0	0	0	506
G.Total	420	396	816	1960	14809	16769	0	0	0	17585

Source: Indian Railways Annual Statistical Statements 2020-21 (Statement No. 40-III)(P-10)

BREAK-UP OF STAFF OF STORES DEPT. PMT./TEMPORARY AS ON 31ST MARCH 2022										
Rly./PUs	GROUP A & B			GROUP C			GROUP D			GRAND TOTAL
	Directly recruited	Promoted	Total	Workshop artisans	Others	Total	Semi-Skilled & unskilled	Others	Total	
CR	21	31	52	193	911	1104	0	0	0	1156
ER	32	26	58	86	1676	1762	0	0	0	1820
NR	16	47	63	2	1865	1867	0	0	0	1930
NER	10	16	26	0	658	658	0	0	0	684
NFR	11	19	30	0	713	713	0	0	0	743
SR	11	27	38	54	798	852	0	0	0	890
SCR	27	16	43	145	840	985	0	0	0	1028
SER	16	23	39	5	1062	1067	0	0	0	1106
WR	71	10	81	4	901	905	0	0	0	986
ECR	17	13	30	1	573	574	0	0	0	604
ECoR	12	11	23	0	219	219	0	0	0	242
NCR	23	10	33	11	566	577	0	0	0	610
NWR	14	16	30	0	551	551	0	0	0	581
SECR	17	10	27	0	409	409	0	0	0	436
SWR	12	13	25	9	441	450	0	0	0	475
WCR	20	11	31	1	475	476	0	0	0	507
Metro	1	6	7	0	64	64	0	0	0	71
CLW	17	9	26	151	329	480	0	0	0	506
BLW	17	12	29	494	14	508	0	0	0	537
ICF	15	12	27	409	0	409	0	0	0	436
RWF	8	7	15	39	152	191	0	0	0	206
PLW	8	13	21	202	4	206	0	0	0	227
RCF	1	3	4	0	273	273	0	0	0	277
MCF	17	9	26	161	0	161	0	0	0	187
G.Total	414	370	784	1967	13494	15461	0	0	0	16245

Source: Indian Railways Annual Statistical Statements 2021-22 (Statement No. 40-III) (P-11)

STATEMENT No.IXB										
BREAK-UP OF STAFF OF STORES DEPT. PMT./TEMPORARY AS ON 31ST MARCH 2023										
Rly./PUs	GROUP A & B			GROUP C			GROUP D			GRAND TOTAL
	Directly recruited	Promoted	Total	Workshop artisans	Others	Total	Semi-Skilled &	Others	Total	
CR	24	29	53	164	853	1017	0	0	0	1070
ER	34	29	63	75	1488	1563	0	0	0	1626
NR	16	45	61	2	1796	1798	0	0	0	1859
NER	10	14	24	0	605	605	0	0	0	629
NFR	9	29	38	0	679	679	0	0	0	717
SR	18	24	42	44	757	801	0	0	0	843
SCR	27	11	38	133	803	936	0	0	0	974
SER	20	20	40	3	1009	1012	0	0	0	1052
WR	47	5	52	2	831	833	0	0	0	885
ECR	16	14	30	2	555	557	0	0	0	587
ECoR	11	10	21	0	214	214	0	0	0	235
NCR	24	10	34	10	547	557	0	0	0	591
NWR	19	8	27	0	521	521	0	0	0	548
SECR	7	8	15	0	398	398	0	0	0	413
SWR	13	12	25	8	423	431	0	0	0	456
WCR	16	9	25	1	471	472	0	0	0	497
Metro	1	6	7	0	61	61	0	0	0	68
CLW	13	11	24	201	224	425	0	0	0	449
BLW	21	10	31	484	11	495	0	0	0	526
ICF	17	10	27	394	3	397	0	0	0	424
RCF	1	2	3	252	0	252	0	0	0	255
RWF	4	7	11	37	142	179	0	0	0	190
PLW	15	5	20	195	2	197	0	0	0	217
MCF	16	7	23	156	0	156	0	0	0	179
G.Total	399	335	734	2163	12393	14556	0	0	0	15290

Source: Indian Railways Annual Statistical Statements 2022-23 (Statement No. 40-III) (P-12)

Statement XI

INVENTORY BALANCES ON RAILWAYS & PUs AS ON 31ST MARCH 2023

	2021-22				2022-23			
	STORES	WMS	MAC	Total	STORES	WMS	MAC	Total
CR	-225.58	19.36	0.00	-206.22	228.69	-57.62	-0.59	170.48
ER	-41.25	1.90	5.75	-33.60	-118.46	53.86	-6.37	-70.97
NR	-76.03	-23.94	492.19	392.22	-9.52	48.27	11.86	50.61
NER	60.81	-17.85	9.22	52.18	-100.96	35.25	-1.36	-67.07
NFR	-128.46	7.23	0.38	-120.85	-177.26	-4.11	0.07	-181.29
SR	15.29	-14.19	-0.04	1.06	-8.32	13.53	27.48	32.69
SCR	-153.77	-69.72	16.77	-206.72	175.19	22.57	-3.92	193.84
SER	13.86	4.82	-4.07	14.61	-66.13	25.51	4.15	-36.47
WR	-84.50	-23.76	0.06	-108.20	-67.97	-9.16	0.00	-77.13
ECR	-107.27	27.49	-1.35	-81.13	-187.12	13.63	-12.09	-185.58
ECOR	4.79	-0.09	0.00	4.70	-10.00	0.03	0.00	-9.97
NCR	34.83	-6.02	148.65	177.46	15.57	24.70	44.43	84.69
NWR	-170.70	-3.92	0.19	-174.43	-44.25	2.34	0.00	-41.91
SECR	-31.10	-13.78	-0.44	-45.32	-11.29	3.65	1.29	-6.35
SWR	-43.97	48.49	-0.20	4.32	-125.77	-40.63	-36.17	-202.57
WCR	-105.08	3.30	8.76	-93.02	-20.67	1.23	5.35	-14.08
MR	8.48	0.00	0.24	8.72	-1.72	0.00	1.77	0.05
TOTAL	-1029.65	-60.68	676.11	-414.22	-529.98	133.05	35.90	-361.02
CLW	133.28	150.42	0.00	283.70	158.79	110.09	0.00	268.87
BLW	2.41	-21.92	6.85	-12.66	-31.62	679.34	2.12	649.84
ICF	17.47	6.69	-12.65	11.51	-129.52	528.41	-7.32	391.57
RWF	13.59	129.98	-12.61	130.96	68.82	-153.68	6.24	-78.62
PLW	4.18	-4.55	-3.02	-3.39	-39.42	-16.50	-0.36	-56.28
RCF	81.03	-2.98	6.62	84.67	-24.29	49.41	0.98	26.10
MCF	-291.27	-143.08	75.54	-358.81	200.18	131.39	-151.28	180.29
TOT./Pus	-39.31	114.56	60.73	135.98	202.94	1328.46	-149.62	1381.77
G.TOTAL	-1068.96	53.88	736.84	-278.24	-327.04	1461.51	-113.72	1020.75

Source Pink Book Pt. -II 2024-25, (P-14)

Statement of stores balances and Issues as on 31.3.2023												Statement No. XI-A
(value in crores of Rs.)												
	2021-22 ACTUAL						2022-23 ACTUAL					
	With Fuel			without Fuel			With Fuel			without Fuel		
Rly/PU	Balance	Issues	TOR	Balance	Issues	TOR	Balance	Issues	TOR	Balance	Issues	TOR
CR	-258.34	1717.24	-15%	-129.17	829.86	-16%	-164.15	2304.51	-7%	76.89	1206.54	6%
ER	440.33	1216.43	36%	442.73	974.55	45%	321.86	1680.71	19%	337.72	1298.06	26%
NR	380.32	3339.58	11%	217.39	777.16	28%	370.81	4152.95	9%	246.53	1380.80	18%
NER	320.02	1572.05	20%	44.66	1117.48	4%	219.07	1956.04	11%	-4.96	1382.00	0%
NFR	193.22	1387.58	14%	37.93	400.56	9%	15.96	2233.95	1%	9.42	530.15	2%
SR	220.09	1230.72	18%	141.05	1030.44	14%	211.77	1589.72	13%	166.27	1169.36	14%
SCR	-75.71	1601.31	-5%	77.06	690.32	11%	99.49	2379.03	4%	79.99	786.66	10%
SER	115.99	856.88	14%	110.65	755.65	15%	49.85	1270.80	4%	41.36	1137.09	4%
WR	-7.71	1515.72	-1%	34.79	598.04	6%	-75.70	2436.20	-3%	30.11	680.26	4%
ECR	-184.06	772.85	-24%	-284.77	527.99	-54%	-371.19	1126.58	-33%	-444.13	818.84	-54%
ECOR	8.45	745.89	1%	17.63	424.62	4%	-1.56	840.25	0%	34.59	441.84	8%
NCR	137.29	631.40	22%	-0.11	463.46	0%	152.86	885.04	17%	53.83	638.94	8%
NWR	47.05	2073.77	2%	164.17	310.21	53%	2.68	2810.23	0%	134.56	383.25	35%
SECR	-23.76	577.47	-4%	-26.76	379.49	-7%	-35.03	924.32	-4%	-21.38	636.55	-3%
SWR	26.31	2056.34	1%	13.71	595.76	2%	-99.47	2176.17	-5%	3.72	393.75	1%
WCR	113.38	788.07	14%	79.98	625.27	13%	92.71	847.69	11%	71.87	629.06	11%
MR	10.30	24.15	43%	10.30	24.15	43%	8.58	27.31	31%	8.58	27.31	31%
Total Rly	1463.17	22107.45	7%	951.24	10525.01	9%	798.54	29641.50	3%	824.97	13540.46	6%
CLW	344.83	4540.22	0%	344.83	4540.22	8%	503.62	4525.54	11%	503.62	4525.54	11%
BLW	-104.40	3502.50	-3%	-104.40	3502.50	-3%	-136.02	4142.75	-3%	-136.02	4142.75	-3%
ICF	341.70	5126.46	7%	341.70	5126.46	7%	212.17	5600.69	4%	212.17	5600.69	4%
RWF	-46.60	854.97	-5%	-46.60	854.97	-5%	22.22	1223.72	2%	22.22	1223.72	2%
PLW	83.84	2367.87	4%	83.84	2367.87	4%	44.42	3354.16	1%	44.42	3354.16	1%
RCF	466.59	3409.56	14%	466.59	3409.56	14%	442.30	3582.96	12%	442.30	3582.96	12%
MCF	-121.99	3178.61	-4%	-121.99	3178.61	-4%	78.19	2752.15	3%	78.19	2752.15	3%
Total PUs	963.97	22980.19	4%	963.97	22980.19	4%	1166.90	25181.97	5%	1166.90	25181.97	5%
G.Total	2427.14	45087.64	5%	1915.21	33505.20	6%	1965.44	54823.47	4%	1991.87	38722.43	5%
Source Pink Book Part-II ,2023-24 & 2024-25 (P-15)												

STATEMENT XIB

STATEMENT OF INVENTORY (Net) 2022-23

RLY/PU	2022-23 RE				2022-23 ACTUALS				VARIATIONS (ACTUALS-RE)			
	Stores	W M S	M A C	TOTAL	Stores	W M S	M A C	TOTAL	Stores	W M S	M A C	TOTAL
CR	5.11	4.02	0.00	9.13	228.69	-57.62	-59.58	111.49	223.58	-61.64	-59.58	102.3604
ER	-230.82	70.09	83.20	-77.53	-118.46	53.86	-6.37	-70.97	112.36	-16.23	-89.57	6.5575
NR	-174.85	57.61	50.00	-67.24	-9.52	48.27	11.86	50.61	165.33	-9.34	-38.14	117.8501
NER	1.10	31.39	0.00	32.49	-100.96	35.25	-1.36	-67.07	-102.06	3.86	-1.36	-99.5563
NFR	-48.47	-2.15	0.00	-50.62	-177.26	-4.11	7.40	-173.97	-128.79	-1.95	7.40	-123.342
SR	-10.94	8.92	-20.00	-22.02	-8.32	13.53	27.48	32.70	2.62	4.62	47.48	54.7208
SCR	14.90	3.32	10.98	29.20	175.19	22.57	-3.92	193.84	160.29	19.25	-14.90	164.6448
SER	-13.63	10.92	0.00	-2.71	-66.13	25.51	4.15	-36.47	-52.50	14.59	4.15	-33.7603
WR	23.48	3.41	0.00	26.89	-67.97	-9.16	0.00	-77.13	-91.45	-12.57	0.00	-104.017
ECR	110.80	-116.68	-1.00	-6.88	-187.12	13.63	-12.09	-185.58	-297.92	130.31	-11.09	-178.701
ECoR	818.00	0.29	0.00	818.29	-10.00	0.03	0.00	-9.97	-828.00	-0.25	0.00	-828.258
NCR	16.15	15.81	20.00	51.96	15.57	24.70	44.43	84.69	-0.58	8.89	24.43	32.7322
NWR	4.75	1.84	0.00	6.58	-44.25	2.34	0.00	-41.91	-49.00	0.50	0.00	-48.4911
SEC	4.00	1.60	-0.40	5.20	-11.29	3.56	1.29	-6.44	-15.29	1.96	1.69	-11.64
SWR	13.87	-84.17	0.00	-70.30	-125.77	-40.63	-36.17	-202.57	-139.64	43.54	-36.17	-132.272
WCR	660.79	-1.10	7.89	667.58	-20.67	1.23	5.35	-14.08	-681.46	2.33	-2.54	-681.658
MR	6.16	0.00	-0.24	5.92	-1.72	0.00	1.77	0.05	-7.88	0.00	2.01	-5.8738
Total Rlys.	1200.40	5.12	150.42	-1355.93	-529.98	132.96	-15.76	-412.77	-1730.37	127.85	-166.18	-1768.7
CLW	40.87	45.37	0.00	86.24	158.79	110.09	0.00	268.87	117.92	64.72	0.00	182.6357
BLW	27.25	0.00	0.00	27.25	-31.62	679.34	2.12	649.84	-58.87	679.34	2.12	622.59
ICF	10.00	0.00	0.00	10.00	-129.52	528.41	-7.32	391.57	-139.52	528.41	-7.32	381.57
PLW	7.17	0.00	0.00	7.17	-39.42	-16.50	-0.36	-56.28	-46.59	-16.50	-0.36	-63.4433
RWF	55.09	0.00	0.00	55.09	68.82	-153.68	6.24	-78.61	13.73	-153.68	6.24	-133.703
RCF	11.50	8.50	0.00	20.00	-24.29	49.41	0.98	26.10	-35.79	40.91	0.98	6.0981
MCF	15.28	0.00	0.00	15.28	200.18	131.39	-151.28	180.29	184.90	131.39	-151.28	165.0089
Total PUs	167.15	53.87	0.00	221.02	202.94	1328.46	-149.62	1381.78	35.78	1274.59	-149.62	1160.756
G.TOTAL	1367.55	58.99	150.42	1576.95	-327.04	1461.42	-165.38	969.01	-1694.59	1402.44	-315.80	-607.947

Source: Pink Book Part II 2023-24 & 2024-25 (P-16) (Value in Crore)

Statement XI-C

Purchase suspense on Railways/PUs									
	2020-21			2021-22			2022-23		
(Value in Crores of Rs)									
	Without Fuel	Fuel only	Total	Without Fuel	Fuel only	Total	Without Fuel	Fuel only	Total
CR	-87.02	-46.14	-133.16	-55.59	-263.78	-319.37	-95.94	-232.45	-328.39
ER	124.82	-5.43	119.39	125.18	-21.18	104.00	74.20	-36.53	37.67
NR	512.77	-328.01	184.76	92.47	109.42	201.89	122.33	-86.74	35.59
NER	0.00	0.00	0.00	0.00	0.00	0.00	0.00	0.00	0.00
NFR	82.55	35.71	118.26	145.42	35.81	181.23	0.00	2.46	2.46
SR	35.28	3.29	38.57	24.48	3.36	27.84	21.67	0.00	21.67
SCR	18.71	-40.84	-22.13	21.81	-210.50	-188.69	21.41	-49.37	-27.96
SER	-28.39	0.00	-28.39	-35.47	-5.79	-41.26	-104.29	-12.57	-116.86
WR	-5.18	-33.06	-38.24	-9.50	-57.51	-67.01	-35.63	-123.72	-159.35
ECR	261.72	-76.50	185.22	206.78	-70.09	136.69	152.06	-88.63	63.43
ECoR	-2.07	-36.11	-38.18	-2.88	-25.61	-28.49	-6.57	-39.69	-46.26
NCR	6.48	0.00	6.48	10.55	0.00	10.55	9.89	0.00	9.89
NWR	59.37	-29.11	30.26	73.95	-123.49	-49.54	83.79	-77.30	6.49
SEC	-31.43	0.00	-31.43	-52.31	0.00	-52.31	-99.49	0.00	-99.49
SWR	-15.53	0.00	-15.53	-12.01	0.00	-12.01	5.44	0.00	5.44
WCR	24.19	18.56	42.75	-28.79	15.09	-13.70	-45.55	-11.83	-57.38
MR	0.00	0.00	0.00	0.00	0.00	0.00	0.00	0.00	0.00
TOT RLYS	956.27	-537.64	418.63	504.09	-614.27	-110.18	103.32	-756.37	-653.05
CLW	-251.95	0	-251.95	-213.27	0	-213.27	-306.79	0	-306.79
BLW	-808.49	0	-808.49	-522.31	0	-522.31	-707.27	0	-707.27
ICF	-1358.29	0	-1358.29	-1287.56	0	-1287.56	-1297.76	0	-1297.76
PLW	-163.01	0	-163.01	-207.85	0	-207.85	-290.48	0	-290.48
RWF	-113.73	0	-113.73	-123.77	0	-123.77	-75.20	0	-75.20
RCF	-224.67	0	-224.67	-333.05	0	-333.05	-317.29	0	-317.29
MCF	-186.42	0	-186.42	-358.89	0	-358.89	-217.54	0	-217.54
TOT PUs	-3106.56	0.00	-3106.56	-3046.70	0.00	-3046.70	-3212.32	0.00	-3212.32
G.TOTAL	-2150.29	-537.64	-2687.93	-2542.61	-614.27	-3156.88	-3109.00	-756.37	-3865.37

Source: Pink Book Pt.II 2022-23 & 2023-24 (P-17)

Statement XII-A

RATIO OF WMS BALANCE(IN %) TO CREDIT (WMS NORMS)

Rly/PUs	2021-22			2022-23		
	Balances	Gross Credit	Percentage	Balances	Gross Credit	Percentage
CR	78.43	1234.76	6.35	20.82	1415.71	1.47
ER	80.66	2198.12	3.67	134.51	2555.30	5.26
NR	100.31	1187.45	8.45	148.59	1352.69	10.98
NER	54.92	622.63	8.82	90.17	812.10	11.10
NFR	16.99	436.47	3.89	12.89	559.61	2.30
SR	32.25	1508.24	2.14	45.79	1641.13	2.79
SCR	22.83	1021.25	2.24	45.40	1085.98	4.18
SER	59.17	938.01	6.31	84.68	1067.90	7.93
WR	33.77	1254.44	2.69	24.61	1315.65	1.87
ECR	136.42	271.20	50.30	150.05	404.99	37.05
ECOR	0.34	230.91	0.15	0.37	252.80	0.15
NCR	98.37	679.61	14.47	123.07	723.01	17.02
NWR	8.71	541.54	1.61	11.05	589.52	1.87
SEC	3.45	363.90	0.95	7.10	329.31	2.16
SWR	108.05	726.85	14.87	67.42	564.30	11.95
WCR	10.30	607.55	1.70	11.53	667.68	1.73
Total Rlys	844.97	13822.93	6.11	978.03	15337.65	6.38
CLW	375.10	4916.77	7.63	485.19	5414.31	8.96
BLW	-337.35	4054.15	-8.32	355.59	3838.68	9.26
ICF	53.72	6775.98	0.79	555.97	6981.12	7.96
RWF	169.96	946.18	17.96	87.81	1852.28	4.74
PLW	91.61	2329.13	3.93	75.12	3259.21	2.30
RCF	149.22	4128.63	3.61	198.63	4260.34	4.66
MCF	-49.88	3592.89	-1.39	81.51	2942.51	2.77
Total PUs	452.38	26743.73	1.69	1839.81	28548.44	6.44
G.Total	1297.35	40566.66	3.20	2817.84	43886.10	6.42

Source pink Book PT.II 2023-24 & 2024-25

(19)

EFFICIENCY INDICATOR

TURN OVER PERCENTAGE OF STORES BALANCES TO ISSUES

(value in crores of Rs.)

YEAR	Railway with Fuel			Railway without Fuel			Production units			Total with Fuel			Total without Fuel		
	Stores Balance	Issues	%	Stores Balance	Issues	%	Stores Balance	Issues	%	Stores Balance	Issues	%	Stores Balance	Issues	%
2009-10	1260.76	13322.90	9	791.95	6314.43	13	1490.80	8183.88	18	2751.56	21506.67	13	1216.92	14498.31	8
2010-11	1330.7	15303.51	9	870.09	7144.47	13	1230.48	8895.28	18	2561.18	24198.79	13	2100.57	16039.75	16
2011-12	1406.48	16643.75	8	961.01	7207.21	12	1348.03	9874.13	14	2754.51	26517.88	11	2309.04	17081.34	13
2012-13	1495.01	19023.77	8	1338.56	7618.77	13	1196.08	11487.18	14	2691.09	30510.95	10	2534.64	19105.95	14
2013-14	1262.15	24289.70	5	1302.3	8009.85	16	1361.63	12556.89	11	2623.78	36846.59	7	2663.93	20566.74	13
2014-15	2738.35	23821.08	11	1774.48	8693.47	20	1466.22	11703.10	13	4204.57	35524.18	12	3240.70	20396.57	16
2015-16	2455.46	18636.82	13	1933.19	8390.92	23	1228.91	14163.99	9	3684.37	32800.81	11	3162.10	22554.91	14
2016-17	2225.74	17875.35	12	1447.72	6927.11	21	643.58	13442.91	5	2869.32	31318.26	9	2091.30	20370.02	10
2017-18	2185.73	20650.28	11	1217.19	9404.21	13	731.77	16690.75	4	2917.5	37341.03	8	1948.96	26094.96	7
2018-19	1714.1	25063.51	7	932.09	10897.6	9	1013.86	21132.13	5	2727.96	46195.64	6	1945.96	32029.77	6
2019-20	1979.07	24486.94	8	682.99	11790.5	6	848.8	25186.82	3	2827.87	49673.73	6	1531.79	36977.33	4
2020-21	739.55	14560.23	5	198.55	9492.11	2	1216.92	18053.59	7	1956.47	32613.82	6	1201.85	27545.7	4
2021-22	1463.17	22107.45	7	951.24	10525	9	963.97	22980.19	4	2427.14	45087.62	5	1915.21	33505.2	6
2022-23	798.54	29641.5	3	824.97	13540.5	6	1166.9	25181.97	5	1965.44	54823.47	4	1991.87	38722.43	5

Pink Book Part-II 2024-25 & (Source details from St. XI-A)

TURN OVER PERCENTAGE ON ZONAL RAILWAYS AND PRODUCTION UNITS												Statement No XIV
Rlys/PUs	with fuel						without fuel					
	17-18	18-19	19-20	20-21	21-22	22-23	17-18	18-19	19-20	20-21	21-22	22-23
CR	1	-1	-6	-16	-23	-7	7	1	-7	-19	-16	6
ER	10	17	28	47	36	19	14	26	43	54	45	26
NR	12	1	3	19	11	9	-5	-33	-45	-59	28	18
NER	8	9	9	27	20	11	0	4	8	12	4	0
NFR	10	20	14	40	14	1	1	42	10	32	9	2
SR	5	3	6	21	18	13	1	7	6	15	14	14
SCR	6	3	4	8	-5	4	10	6	8	12	11	10
SER	32	4	18	17	14	4	46	8	26	18	15	4
WR	8	3	1	9	-1	-3	17	10	7	19	6	4
ECR	25	11	10	-9	-24	-33	52	20	8	-23	-54	-54
ECoR	5	4	3	1	1	0	25	30	17	6	4	8
NCR	40	33	30	21	22	17	33	32	18	-12	0	8
NWR	13	12	13	19	2	0	43	46	63	67	53	35
SECR	1	0	0	2	-4	-4	-7	-4	-3	-5	-7	-3
SWR	4	-3	-3	9	1	-5	4	-1	-3	4	2	1
WCR	11	13	21	37	14	11	19	24	29	38	13	11
MR	13	13	10	6	43	31	13	13	10	6	43	31
Total Rlys	204	142	161	258	139	68	273	231	195	165	170	121
CLW	3	5	1	6	8	11	3	5	1	6	8	11
BLW	-4	-1	-3	-3	-3	-3	-4	-1	-3	-3	-3	-3
ICF	5	4	3	9	7	4	5	4	3	9	7	4
RWF	6	5	-3	-8	-5	2	6	5	-3	-8	-5	2
PLW	7	5	2	4	4	1	7	5	2	4	4	1
RCF	18	16	17	14	14	12	18	16	17	14	14	12
MCF	0	5	8	7	-4	3	0	5	8	7	-4	3
Total PUs	35	39	25	29	21	30	35	39	25	29	21	30
G.Total	239	181	186	287	160	98	308	270	220	194	191	151

Source Pink Book Pt.II 2023-24 & 2024-25

TURN OVER PERCENTAGE OF TOTAL INVENTORIES OF THE TOTAL PRODUCTION VALUE IN PRODUCTION UNITS																							Statement No. XV		
Year	CLW			BLW			ICF			PLW			RWF			RCF			MCF			Value in Crores of Rs.			
	Total Value of Inventory	Total Producti on Value	% age	Total Value of Inventory	Total Producti on Value	% age	Total Value of Inventory	Total Producti on Value	% age	Total Value of Inventory	Total Producti on Value	% age	Total Value of Inventory	Total Producti on Value	% age	Total Value of Inventory	Total Producti on Value	% age	Total Value of Inventory	Total Producti on Value	% age	Total Value of Inventory	Total Producti on Value	% age	
2018-19	93.44	3827.38	2	-157.55	3429.4	-5	214.25	6220.71	3	112.52	2149.08	5	38.55	778.61	6	374.94	2383.43	16	55.62	2343.52	2	51.61	55.05	94	
2019-20	197.11	4224.18	5	-44.05	3904.75	-1	219.13	7928.73	3	99.09	2672.5	4	37.49	876.28	4	381.67	2437.59	16	123.43	3142.79	4	63.61	120.97	53	
2020-21	21.29	3511.17	1	-106.82	3127.81	-3	225.29	3627.14	6	61.8	1830.37	3	-28.7	750.4	-4	423.74	2670.95	16	252.21	2535.75	10	82.55	86.15	96	
2021-22	211.55	4540.22	5	-106.81	3502.5	-3	324.23	5126.46	6	79.66	2367.87	3	-60.18	854.97	-7	385.56	3409.56	11	169.29	3178.61	5	102.68	122.11	84	
2022-23	344.83	4525.54	8	-104.4	4142.75	-3	341.7	5600.69	6	83.84	3354.16	2	-46.6	1223.72	-4	466.59	3582.96	13	-121.99	2752.15	-4	124.77	152.39	82	
Source Pink Book Part II, 2023-24 & 2024-25																									
(P-22)																									

VALUE OF STORES TRANSACTIONS DURING 2021-22 & 2022-23

Statement No. XVII

Rly/PUs	General Purchase as per St.39-B (Annual Statistical Statement)				(Value in Crores of Rs)			
	Value of Receipts		Value of Issues		Closing Balance as per Appropriation A/c Pt. II on 31st March		Total Stores Closing Balance as per Annual Statistical Statement	
	2021-22	2022-23	2021-22	2022-23	2021-22	2022-23	2021-22	2022-23
1	2	3	4	5	6	7	8	9
CR	1708.6	2304.12	1717.24	2306.06	-100.96	-149.49	96.4	234.41
ER	1186.01	1609.11	1213.75	1662.8	-0.06	0.12	319.77	263.44
NR	3259.00	4102.00	3335.00	3904.00	68.59	82.17	393.26	383.74
NER	437.97	544.39	432.36	525.66	0.42	36.55	392.74	360.05
NFR	1166.2	1725.09	1256.22	1870.56	54.42	75.11	161.72	-42.75
SR	1236.47	1577.87	1230.01	1590.41	-1.38	0.97	235.56	223.02
SCR	163.58	192.93	161.97	190	-0.23	-0.32	142.61	193.08
SER	768.08	1115.13	828.78	1047.02	4.76	4.76	52.58	2.98
WR	147.91	2466.47	145.92	2467.34	5.04	62.54	69.61	97.91
ECR	254.31	429.63	271.64	434.75	0	0	18.3	7.12
ECOR	747.27	859.77	712.09	871.26	2.10	-2.88	114.89	103.39
NCR	614.94	895.12	580.11	879.55	-6.62	-13.15	137.29	152.87
NWR	321.39	436.43	328.33	405.49	1.39	1.15	-27.37	-57.28
SECR	289.14	409.03	305.23	397.14	4.57	0	62.52	47.23
SWR	1406.43	2061.41	1444.76	2153.66	36.60	36.57	107.42	15.17
WCR	600.11	835.83	629.06	764.1	-65.37	-61.36	144.96	192.14
MR	10.99	98.82	5.54	8.52	0	0	16.06	17.42
Total Rlys	14318.40	21663.15	14598.01	21478.32	3.27	72.74	2438.32	2193.94
CLW	4777.99	4973.08	4696.17	4760	-43.33	-38.66	560.03	774.25
BLW	3504.91	4111.12	3502.5	4142.74	7.32	19.16	429.04	584.52
ICF	5726.23	6352.78	5765.74	6457.16	36.98	1.81	1640.45	1527.98
RWF	881.05	1242.48	857.82	1224.9	0.24	2.69	80.54	98.13
PLW	2407.86	3379.52	2361.53	3342.63	0.00	0.00	295.08	331.96
RCF	3612.59	3545.38	3409.56	3582.96	-7.74	-6.55	790.22	752.64
MCF	3258.13	2652.88	3179	2738.16	0.00	0.00	255.26	169.92
Total PUs	24168.76	26257.24	23772.32	26248.55	-6.53	-21.55	4050.62	4239.40
G.Total	38487.16	47920.39	38370.33	47726.87	-3.26	51.19	6488.94	6433.34

Source: Appropriation Accounts Pt.II

Statement No XVII-A
VALUE OF SCRAP SOLD

(value in crores of Rs.)

RLY/ PU	2016-17	2017-18	2018-19	2019-20	2020-21	2021-22	2022-23
CR	203.83	252.88	276.32	321.31	390.67	530.35	483.28
ER	166.16	190.31	219.14	348.14	304.48	372.59	377.36
NR	243.72	312.86	427.95	421.49	445.72	624.36	675.35
NER	153.81	154.71	148.30	122.97	229.51	164.61	212.52
NFR	115.48	87.80	96.72	87.68	94.67	155.79	189.92
SR	199.66	230.12	275.69	283.85	295.53	348.58	417.91
SCR	223.31	277.07	339.61	269.75	308.48	315.06	391.02
SER	167.49	171.81	293.62	295.68	237.53	321.16	390.3
WR	186.92	269.55	536.99	533.57	491.04	513.46	561.97
ECR	80.44	135.11	266.65	228.40	307.59	266.77	343.21
ECOR	101.44	118.18	185.96	269.17	273.49	313.74	251.52
NCR	156.95	191.39	213.89	224.52	270.7	276.87	265.37
NWR	131.60	172.94	197.47	222.05	206.68	244.11	267.75
SECR	230.65	151.11	203.28	230.92	257.91	266.14	304.23
SWR	57.44	87.47	137.46	146.54	115.88	138.04	180.52
WCR	157.84	174.85	196.78	166.29	187.76	284.89	236.35
Metro	1.75	3.49	6.18	7.89	8.28	8.31	10.12
Total Rlys	2578.49	2981.65	4022.01	4180.22	4425.92	5144.83	5558.70
CLW	5.14	10.08	11.10	17.70	20.28	21.82	26.67
BLW	4.62	5.32	10.88	5.29	10.29	11.19	11.36
ICF	18.70	36.09	42.71	33.75	21.81	42.12	39.77
RWF	25.31	30.44	35.55	33.60	27.62	31.46	41.31
PLW	44.83	50.55	33.96	33.57	32.16	17.96	21.29
RCF	14.51	19.73	20.40	12.64	17.67	25.34	20.67
MCF/RBL	2.55	5.49	9.87	9.34	11.51	15.13	21.88
RWP/BELA	0.74	3.85	5.60	6.57	8.01	6.39	15.32
Total (PUs)	116.40	161.55	170.07	152.46	149.35	171.41	198.27
Grand Total	2694.89	3143.20	4192.08	4332.68	4575.27	5316.24	5756.97

(P-25)