



भारत सरकार GOVERNMENT OF INDIA  
रेल मंत्रालय MINISTRY OF RAILWAYS  
रेलवे बोर्ड RAILWAY BOARD



No. 2018/M(N)/172/1(E-3323008)

New Delhi, dated:04.01.2023

Principal Chief Mechanical Engineers  
All Zonal Railways except SWR

Sub: Wornout of anticreep in CBCs

Ref: CRSE/Frt./SWR's Letter No. SWR/M/N/7/Vol dated 26.12.2022 (copy enclosed)

Please find enclosed above mentioned letter wherein wornout of anticreep in CBCs has been reported.

It is requested to arrange to check the condition and availability of anti creep lug in wagons during ROH & POH.

DA: As above

*Vivek*  
04/01/23

(Vivek Mohan)

Dir. Mech. Engg. (Freight)

Railway Board

Telephone no. 011-23047448

Email – [dmef@rb.railnet.gov.in](mailto:dmef@rb.railnet.gov.in)

Copy to :

1. PCME/SWR
2. EDS/Wagon/RDSO

\*\*\*\*\*

Room No. 329, Rail Bhavan, Raisina Road, New Delhi-110001





दक्षिण पश्चिम रेलवे  
**SOUTH WESTERN RAILWAY**

यांत्रिक प्रधान कार्यालय/Mechanical HQ Office,  
गदग रोड / Gadag Road,  
हुबली /HUBLI- 580 020  
Dated : 26.12.2022

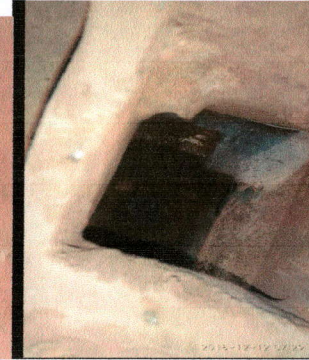
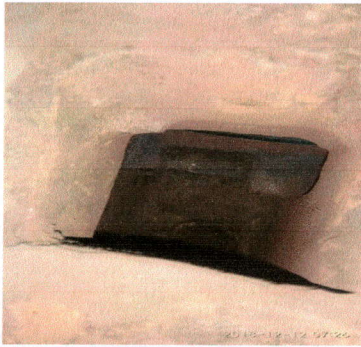
No. SWR/M/N/7/Vol-

**Executive Director/Wagon  
RDSO , Manaknagar  
Lucknow (U.P.)**

**Sub: Worn out of anticreep in CBC s**

The train partings/CBC uncoupling cases are in increasing trend on SWR. In the current year 40 cases are reported up to till date. Out of 40 cases , 37 are CBC uncoupling cases and 3 breakage of CBC components i.e, knuckle& Shank. In uncoupling cases,04 cases are due to worn out of anticreep in CBC body, 15 cases exact cause not been established and others are for worn out of lock, bearing piece, non standard operating handle, worn out of anti rotation lug of operating handle etc.

On scrutiny, anticreep of CBC body found worn out, breakage and also found missing in some wagons. . It can seen in the photographs given below-



Due to increasing cases of uncoupling, thorough inspection of coupler bodies for worn out of anticreep lug has been started in the wagon depots of SWR. In the current year 53 cases have been reported wherein the anticreep lug is either missing or badly wornout. All the CBC have been replaced with new one which causes increasing the workload of open line by consuming time, man power and material. Further it causes to increase of wagon ineffective also. To get relief from ths problem, the following is suggested.-

- 1) Service limit for wear on the anticreep lug has to be specified during ROH and POH attention.
- 2) Wagon workshops may be strictly advised to check the availability of proper anticreep lug in all the CBC.

Please do the needful.

(Prakash Chaudhary)  
**CRSE/Frt/SWR**

C/- EDME/Freight/Railway Board-for kind information please.