

280630(2)/2021/O/o. SDGM/HQ/SECR

दक्षिण पूर्व मध्य रेलवे
SOUTH EAST CENTRAL RAILWAY

कार्यालय
वरिष्ठ उपमहाप्रबंधक, बिलासपुर



Office of the
Sr. Dy. General Manager, Bilaspur.
Tel.No. 64006(Rly), 07752-414229

पत्र सं. No. WS/GSD/R/ 420

दिनांक Dated: 30.06.2021

Dy.CMM(Sales),
General Store Depot,
S.E.C. Railway,
Raipur.

Sub.: Work study on "Review of workload vis-a-vis existing cadre strength workload of Store department under GSD Raipur."


- Ref.: 1. This office letter no. WS/GSD/R/1046 dated 29.12.2020.
2. Your's office Note No. SECR-HQOS(GEN)/28/2021 dated 03.03.2021.
3. This office letter no. WS/GSD/R/e-272525 dated 22.06.2021.

The work study of GSD Raipur unit under Store department has been undertaken to review the existing workload vis-à-vis cadre and outsourcing of activities. The draft report contains recommendation for surrender of 30 surplus posts [07 Ministerial, 01 Record Sorter, 02 Carpenter, 18 ADS and 02 AGS] from Store department under GSD Raipur in phase manner and was sent to your office on 29.12.2020.

In response to it, a reply vide your's office Note No. SECR-HQOS(GEN)/28/2021 dated 03.03.2021 has been received. The remarks have been reviewed and a reply note has been sent from this office on dated 07.04.2021. And further, no reply has been received so far.

Thus in view of all, above draft study report against the remarks offered should be treated as final and it is advised that the work study report should be implemented by surrendering the surplus posts as recommended by Work Study Cell from GSD Raipur unit under Store department, so that progress of implementation of work study can be advised to the Railway Board accordingly.

This has approval of SDGM.


(S N Pattnaik) 30/6/2021
Asst. Work Study Officer
For Sr. Deputy General Manager

Encl: 1 work study report.

Copy along with one copy of work study report is forwarded to:-

- 1) The Executive Director, E&R (ME), Railway Board for kind information
- 2) PCMM/SECR/BSP for information and necessary action.



SOUTH EAST CENTRAL RAILWAY

WORK STUDY CELL

Work study report on

Review of Cadre strength Vis-à-vis Work Load of Store Department under GSD/Raipur in Raipur Division



OVER S.E.C. RAILWAY

WORK STUDY CELL
S. E C. RAILWAY
BILASPUR

STUDY NO.
SEC/02/2021-22

SOUTH EAST CENTRAL RAILWAY**WORK STUDY REPORT****ON****Review of Cadre strength Vis-à-vis Work Load of
Store Department under GSD/Raipur
in Raipur Division****OVER S.E.C. RAILWAY****GUIDED BY****SRI AMIT KUMAR SINGH****SR.DY. GENERAL MANAGER****LED BY****SRI S. N. PATNAIK****Asst. Work Study Officer****CONDUCTED BY****SRI A. C. BEHERA****CH. WORK STUDY INSPECTOR****SRI ANSUMAN HALDER****WORK STUDY INSPECTOR****WORK STUDY CELL****S. E. C. RAILWAY, BILASPUR****STUDY No.****SEC/02/2021-22**

CONTENTS

Chapter	Description	Page No.
-	Summary of Recommendations & Suggestions	4
I	Introduction	5-7
II	Observations	8-36
III	Critical Analysis and Recommendations	37-48
IV	Financial Evaluation	49

SUMMARY OF RECOMMENDATIONS & SUGGESTIONS

S#	Descriptions	Para Ref.
	<u>RECOMMENDATIONS:</u>	
1.	Considering the detail observation and critical analysis of all aspect, out of total sanctioned of 150 posts (Actual strength 118), the requirement of staff at GSD/R comes to 120. Thus, 20 vacant posts <i>[07 Ministerial, 01 Record Sorter, 10 ADS and 02 AGS]</i> are <i>identified as surplus from GSD Raipur and should be surrendered in phase-I.</i>	3.5.1
2.	To bring savings in manpower costs and improving efficiency, it is recommended that some non-core activities of GSD Raipur like Carpentry, Loading/ Unloading & House Keeping activity should be outsourced. Therefore after outsourcing of Carpentry, Loading/ Unloading & House Keeping activities, <i>02 posts of Carpenter and 08 posts of ADS deployed for this activity would be surplus and should be surrendered in Phase-II from GSD Raipur.</i> The live men (staff) should be redeployed at other units as per requirement.	3.5.2
3.	User Depot Module (UDM)for Store Department should be introduced in GSD which will bring transformational changes from manual working with Real time transactions and online information exchange among all stakeholders.	3.5.3
	<u>SUGGESTIONS:</u>	
4.	All Wards should be equipped with computers, printer and LAN connection to achieve paperless working.	3.5.4
5.	All Gr.D staff under Store Department may be re-designated as Multi-Tasking Staff (MTS) on the plea that they can be utilized for multi-task activities at different Sections/Wards.	3.5.5

CHAPTER-I**1.0 INTRODUCTION:**

The study of Store Department under General Store Depot, Raipur has been undertaken to review the existing cadre strength in view of present workload, outsourcing of some activities, requirement of posts and optimum utilization of manpower.

The following methodology has been adopted for conducting the study:

- (i) Collection of relevant data.
- (ii) Examination of data/records.
- (iii) Interaction with Supervisors and staff.
- (iv) Critical Analysis.

1.1 GENERAL STORE DEPOT/RAIPUR:

General Store Depot/Raipur is situated at Raipur, approx 7 Kilometers away from Raipur Railway station in Raipur Division of S.E.C. Railway located in Chhattisgarh. The GSD/Raipur is headed by Dy.CME (Sales). The Depot performs Scrap management in zonal level, issuing and receiving of common stock items of units and departments, GSD organization cadre management etc.

1.3 Sections/shops in GSD Store/R: There are 20 sections/Wards at Store department of GSD Raipur as follows.

<u>S#</u>	<u>Name of Section/Ward.</u>		
1	General Section	11	Central Accounting Section(CAS)
2	Time Office	12	Petty Repair Shop(PRS)
3	Dispatch Section	13	Scrap Yard
4	Receipt Section	14	Sales Section
5	Ward -2010	15	Special Gang
6	Ward -2011	16	50 MT Rail Weigh Bridge
7	Ward -2012	17	50 MT Rail Weigh Bridge
8	Ward -2013	18	Non-Ferrous Section
9	Ward -2014	19	Confidential Section
10	Ward -2015	20	Establishment Section

1.4 Importance of Store Section

Stores depots play an important role in Railway's operations, maintenance and in-house production activities. Effective stores management ensures timely availability of essential items for efficient operations of the Railways with minimum blocking of capital by timely ascertaining the needs of stores and arranging such materials in the most efficient, economical and expeditious manner. The stock held in the Stores Depots may be either (a) Stock Items or (b) Non-Stock Items. Stock Items are further classified as (i) Ordinary Stores and (ii) Emergency Stores.

Stock Items: These are items of stores, which are frequently and regularly required. All stock items are given unique identification numbers called Priced Ledger Number (PL No) for easy identification and standardization across the Railways.

Ordinary Stores: These are items of stores for which there is a regular turnover caused by a constant demand and which are stocked by the Stores department in its depots.

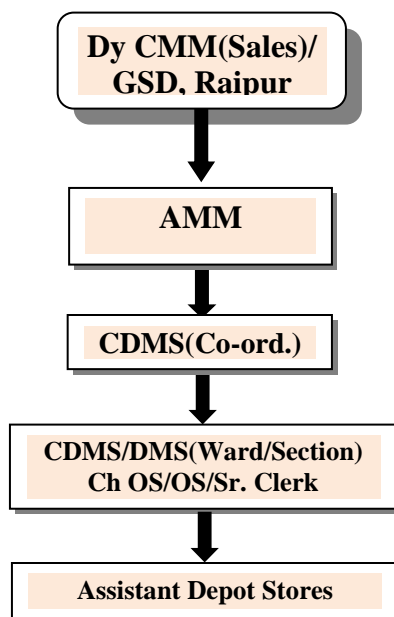
Emergency Stores: These are items of stores which ordinarily do not wear out or require renewal but are not readily obtainable are kept in stock to meet any emergency due to breakage or unanticipated deterioration of such items. These are generally components of imported machines and rolling stock.

Non-stock Items: All items other than Stock items are termed as non-stock items.

280630(2)/2021/O/o. SDGM/HQ/SECR

1.5 ORGANIZATIONAL SET UP:

Organisation set up of Store department of GSD/Raipur is as follows:



CHAPTER-II**2.0 OBSERVATIONS :**

2.1 Staff Position: The Consolidated cadre strength of Store Department under General Store Depot/Raipur is as under:

S#	Category	level	Sanction	Actual	Vacancy
1	Ch OS	L-7	7	9	-2
2	OS	L-6	21	8	13
3	Sr. Clerk	L-5	4	3	1
4	Jr Clerk/Typist	L-2	3	1	2
5	Record sorter	L-2	1	0	1
6	Head Typist	L-6	1	1	0
7	Sr.Steno	L-6	1	0	1
8	CDMS	L-7	10	8	2
9	DMS	L-6	4	3	1
10	M.C.M	L-6	3	2	1
11	Carpenter-I	L-5	2	1	1
12	Carpenter-II	L-4	0	1	-1
13	Painter-I	L-5	2	1	1
14	Painter-III	L-2	0	1	-1
15	M.L.Driver -I	L-5	2	2	0
16	Fitter-I	L-5	1	2	-1
17	Fitter-II	L-4	1	0	1
18	A D (Stores) (Helper-I)	L-1	55	6	49
19	A D (Stores) (Mate)	L-1	0	0	0
20	A D (Stores) (Packer)	L-1	2	2	0
21	A D (Stores) (S/Mazdoor)	L-1	8	5	3
22	A D (Stores) (J/Khalasi)	L-1	17	7	10
23	G A (Stores) R/Sorter-II	L-1	1	0	1
24	G A (Stores) (J/Peon)	L-1	3	0	3
25	A D (Stores) (Helper-II)	L-1	0	52	-52
26	G A(Stores) (Peon)	L-1	0	2	-2
27	B/Peon	L-1	1	1	0
Total			150	118	32
• 01 CDMS is retired and 01 ADS is expired during Work Study.					

2.4 Section wise activities: Details of activities of the Shops/Sections under Store department of GSD Raipur are as under:

2.4.1 General Section:-

General section deals with details of Time office management, Reports/ feedback to higher authority, depot maintenance works, infrastructure work etc. Audit reply, Daily work distribution of Group-D staff/ gang, Maintenance of T&P/M&P, Internal communication of office circulars, Proposal for procurement of office assets, T&P, M&P, Major & Minor Works programme, collection of materials from other depot. And total 12 staff (01-CDMS, 03 OS. 07-ADS/Peon and 01 B/Peon) are deployed in this section.

S.No	Name	Designation	Work Dealt
1	Sri Ramanuj Prasad	CDMS	Overall supervision of depot, Time office management, Reports/ feedback to higher authority, depot maintenance works, infrastructure work etc. Audit reply, Daily work distribution of Group-D staff/ gang, Maintenance of T&P/M&P, Internal communication of office

280630(2)/2021/O/o. SDGM/HQ/SECR

			circulars, Proposal for procurement of office assets, T&P, M&P, Major & Minor Works programme, collection of materials from other depot
2	Sri Sunil Kumar	Ch. OS	Preparation of proposals, compliance, Floating of Tender, Comparative Statement, Briefing Note, TC, Agreement, Survey Sheet, and proposals for condemnation of furniture, Computers, Printer, M&P items, preparation of pay order, chasing HQ & Divn. etc.
3	Sri Henery Santiago	OS	Maintenance of 50MT & 30MT Rail Weigh Bridge, 1000Kgs. Cap Weighing Scale, 500 Kgs. Weighing scale, out sourcing works, , development work, Release of SD, EMD PG amount. Calibration record Misc. Correspondence, Monitor Misc. work in the section, feed back to officers as and when require etc.
4	Smt. Kumari Devi	OS	Preparation & Submission of bills for FLT, Lister truck, Hiring of vehicle, Material loading & Unloading and other Misc. contract, Officer contingent, Computer Contingent, Telephone bills, CUG ABC & D plan and other Misc. Work.
5	Smt. Nookamma	ADS	General works related to general section cleanness, movement of file, letters etc.
6	Smt. B.Mary	ADS	Preparation of forecast demand, Signature verification for issue of materials to various consumers, preparation of Requisitions, cleaning and disinfection services of section.
7	Sri Nitish Chandra	ADS	Preparation of Duty pass and Booking memo for the staff. signature verification for issue of materials to various consumers. Depot outside works like collection urgent documents from divisional office, RWSS account and handed over/ submission bills and urgent document. First Aid arrangement for staffs. Depot truck Booking for various destination etc.
8	Sri Arun Kumar	ADS	Working as Keyman i.e. collection of key of all wards and godowns, closing/sealing /opening of Main Gate, Offices.
9	Sri Niranjan Prasad Mishra	Peon	Working as peon
10	Sri Ram Prasad	Peon	Working as peon
11	Sri Sheel Ratan Bansod	ADS	Maintenance of library
12	Sri Ravi Anand	B/Peon	Attached with Dy.CMM office.

280630(2)/2021/O/o. SDGM/HQ/SECR

2.4.2 Time Office:-

Time Office deals with details of Time keeping, outgoing materials, entry of gate pass, entry of outsiders etc. And total 02 Tech. are deployed in this section.

S.No	Name	Designation	Work Dealt
1	Sri Manoj Ku. Yadav	Tech.-I/ Carpenter	Working as time keeper
2	Sri Chakradhar Singh Sidar	Tech.- I/Carpenter	To assist time keeper, entry in register for incoming and outgoing materials, entry of gate pass, entry of outsiders etc.

2.4.3 Dispatch Section:-

Dispatch Section deals with Maintenance of Dispatch Register, Receipt Register and distribution of Dak in division, other Unit & HQ, Sending Dak through Post Office. Total 02 ADS are deployed in this section.

S.No	Name	Designation	Work Dealt
1	Smt. Shatrupa Rahi	ADS	Maintenance of Dispatch Register, Receipt Register & Dak distribution Register.
2	Sri Shailesh Ku. Rai	ADS	Distribution of Dak in division, other Unit & HQ, Sending Dak through Post Office.

2.4.4 Receipt Section:

Receipt Section deals with Collection of materials, Inspection of received consignment for quality and quantity, Preparation of receipt note, Clearance of rejection and claims cases, Ensuring the compliance of quality policy and quality objective & Any other work assigned by superiors. Total 05 staff (01-MS, 01 CCT and 03-ADS) are deployed in this section.

S.No	Name	Designation	Work Dealt
1	Sri K.V.R.Surya Prakash	DMS	Collection of materials, Inspection of received consignment for quality and quantity, Preparation of receipt note, Clearance of rejection and claims cases, Ensuring the compliance of quality policy and quality objective & Any other work assigned by superiors.
2	Sri Abhishek Kumar	Clerk Cum Typist(Sr.Clerk)	To assists DMS in preparation of tally, typing of letter, preparation of R/Note, correspondence for claim and rejection cases etc.
3	Smt. Laxmi Mudliar	ADS	cleaning & sweeping work daily related to section, counting of receipted materials & stacking of materials etc.
4	Sri Kaptan Singh Meena	ADS	Chasing of materials from parcel office, counting of materials, sending of materials in ward, other works related to section.
5	Sri M.V.Satyanarayana	ADS	Preparation of Gate pass, Preparation of DS/8, closing, sealing and opening of section, distribution of letters in wards and sections.

280630(2)/2021/O/o. SDGM/HQ/SECR**2.4.5 Ward -2010 :**

There are 118 types of store materials stored and maintained in Ward No-2010 and total 04 staff (01-CDMS and 03-ADS) are deployed in this section.

S.No	Name	Designation	Work Dealt
1	Sri Sanatan Biswas	CDMS	Accountal of receipts, stocking and preservation of stores, Issue and distribution of materials, Entry of details of receipts and issues in IMMIS, Ensuring the compliance of quality and quality objectives & Any other work assigned by superiors.
2	Sri Bhupendra Ku. Sahu	ADS	Opening, closing & sealing of ward, handling of materials, to assist in preservation of materials, rolling of paint drum, stacking of materials etc.
3	Sri Niranjana	ADS	Counting of materials at the time of Receipt with R/Note & I/Note, Opening, closing & sealing of ward, handling of materials, to assist in preservation of materials, stacking of materials etc.
4	Smt Madhuri Naidu	ADS	cleaning & sweeping work daily related to ward, Gate pass preparation verified copies pairing with original office copies, to assist in preservation of materials, stacking of materials etc.

2.4.6 Ward -2011 :

There are 161 types of store materials stored and maintained in Ward No-2011 and total 04 staff (01-CDMS and 03-ADS) are deployed in this section.

S.No	Name	Designation	Work Dealt
1	Sri Om Narayana Tiwari	CDMS	Accountal of receipts, stocking and preservation of stores, Issue and distribution of materials, Entry of details of receipts and issues in IMMIS, Ensuring the compliance of quality and quality objectives & Any other work assigned by superiors.
2	Sri Ashok Kumar	ADS	Counting of materials at the time of Receipt with R/Note & I/Note, Opening, closing & sealing of ward, handling of materials, to assist in preservation of materials, stacking of materials etc.
3	Smt. B. Anju	ADS	Cleaning & sweeping work daily related to ward & to assist in preservation of materials, stacking of materials etc.
4	Sri Shashi Ranjan Verma	ADS	Gate pass preparation verified copies pairing with original office copies, to assist in preservation of materials, stacking of materials etc., handling of materials, to assist in preservation of materials, stacking of materials etc.

2.4.7 Ward -2012 :

There are 88 types of store materials stored and maintained in Ward No-2012 and total 02 staff (01-DMS and 01-ADS) are deployed in this section.

S.No	Name	Designation	Work Dealt
1	Sri Suresh Gaikwad	DMS	Accountal of receipts, stocking and

280630(2)/2021/O/o. SDGM/HQ/SECR

			preservation of stores, Issue and distribution of materials, Entry of details of receipts and issues in IMMIS, Ensuring the compliance of quality and quality objectives & Any other work assigned by superiors.
2	Sri Kaulesh Ku. Pal	ADS	Cleaning & sweeping work daily related to ward, Opening, closing & sealing of ward & handling of materials

2.4.8 Ward -2013 :

There are 194 types of store materials stored and maintained in Ward No-2013 and 01 Sr. Clerk and 01 ADS is deployed in this section.

Sri Suresh Gaikwad DMS of Ward No-2012 is the incharge of this Ward.

S.No	Name	Designation	Work Dealt
1	Sri Satish Kumar Verma	Sr.Clerk	To assist In-charge of ward in various work of ward like Counting of materials at the time of Receipt with R/Note & I/Note, preservation of materials, stacking of materials etc.
2.	Sri R.S Sahu	ADS	Counting of materials at the time of Receipt with R/Note & I/Note, Opening, closing & sealing of ward, handling of materials, to assist in preservation of materials, stacking of materials etc.

2.4.9 Ward -2014 :

There are 105 types of store materials stored and maintained in Ward No-2014 and total 04 staff (01-CDMS and 03-ADS) are deployed in this section.

S.No	Name	Designation	Work Dealt
1	Sri D.K.Bagh	CDMS	Accountal of receipts, stocking and preservation of stores, Issue and distribution of materials, Entry of details of receipts and issues in IMMIS, Ensuring the compliance of quality and quality objectives & Any other work assigned by superiors.
2	Sri Mantosh Ku. Yadav	ADS	Counting of materials at the time of Receipt with R/Note & I/Note, Opening, closing & sealing of ward, handling of materials, to assist in preservation of materials, stacking of materials etc.
3	Sri Pankaj Ku. Verma	ADS	Gate pass preparation verified copies pairing with original office copies, to assist in preservation of materials, stacking of materials etc.
4	Smt. Jamuna Devi Khunte	ADS	Cleaning & sweeping work daily related to ward, handling of materials etc.

2.4.10 Ward -2015 :

There are 113 types of store materials stored and maintained in Ward No-2015 and total 03 staff (01-CDMS and 02-ADS) are deployed in this section.

280630(2)/2021/O/o. SDGM/HQ/SECR

S.No	Name	Designation	Work Dealt
1	Sri Joseph Hembram	CDMS	Accountal of receipts, stocking and preservation of stores, Issue and distribution of materials, Entry of details of receipts and issues in IMMIS, Ensuring the compliance of quality and quality objectives & Any other work assigned by superiors.
2	Sri Ravi Shankar Sahu	ADS	Counting of materials at the time of Receipt with R/Note & I/Note, Opening, closing & sealing of ward, handling of materials, to assist in preservation of materials, stacking of materials etc.
3	Kumari A. Hemavati	ADS	cleaning & sweeping work daily related to ward, Gate pass preparation verified copies pairing with original office copies, to assist in preservation of materials, stacking of materials etc.

2.4.11 CAS Section:-

Central Accounting Section(CAS) section deals with all the stock cards of the depot will be maintained up-to-date. This section is dealing with the numerical accounting and recoupment of stocks of the same classes of stores as are dealt with in the corresponding wards, the receipt and registration of the requisitions placed by indentors on the depot, where the stock cards are maintained by each ward for the classes of stores stocked therein, the vouchers being passed on to the numerical ledger posters direct instead of to a separate ledger section. The Requisition Register (S. 1307), is also maintained in the depot's central office.

And total 08 staff (04-CDMS, 02-OS and 02-ADS) are deployed in this section.

S.No	Name	Designation	Work Dealt
1	Sri B.L.Netaam	Ch.OS	Section In-charge To maintain CAS-2010 (Stationary, Oil and Paints).
2	Smt. Asha Jyoti	Ch.OS	To maintain CAS-2014 & 2015 (clothing & General items).
3	Sri R. Mohan Rao	Ch.OS	To maintain CAS-2012 & 2013 (C&W items).
4	Sri C.Sai Gopal	Ch.OS	To maintain CAS-2015 (Electrical, TRD, OHE items).
5	Sri A.K.Pandey	OS	To maintain CAS-2011 (S&T items)
6	Sri Indresh Kumar	OS	To maintain CAS-2013 (Coaching items).
7	Sri Sanjit Ku. Mishra	ADS	File movement and record keeping & other Misc. work.
8	Smt. Nirmala	ADS	Attached with CAS section for general cleaning and sweeping works.

2.4.12 PRS Section:-

Petty Repair Shop(PRS) section deals with details of Maintenance work for depot vehicles and other infrastructure, Scrap wagon door opening, nut bolt cutting, Painting & Numbering of lot board & other painting works of depot etc. And total 08 staff (02-MCM, 02-MLD, 02-Tech. and 02-Painter) are deployed in this section.

S.No	Name	Designation	Work Dealt
------	------	-------------	------------

280630(2)/2021/O/o. SDGM/HQ/SECR

1	Sri B.L.Sarkar	MCM	Maintenance work for depot vehicles and other infrastructure
2	Sri Arjun Mahato	MCM	Driving of Railway Truck
3	Sri M.Venkat Rao	MLD-I	Driving of Railway Truck
4	Sri Santan Das	MLD-I	Driving of Railway Truck
5	Sri Santosh Rout	Fitter-I	Scrap wagon door opening, nut bolt cutting, & other Misc. Works
6	Sri Venkat Ramana	Painter-II	Painting & Numbering of lot board & other painting works of depot.
7	Sri S.Srinivas Rao	Painter-III	Painting & Numbering of lot board & other painting works of depot.
8	Sri Pichemani	Fitter-I	Scrap wagon door opening, nut bolt cutting, & other Misc. Works

2.4.13 Scrap Yard:-

Scrap Yard deals with Segregation of scrap and formation of lots, conducting survey committee, wherever necessary and putting up recommendations to competent authority for acceptance, Delivery of sold lots, Ensuring the compliance of quality policy and quality objective, CRSL and DS-8 & Any other work assigned by superiors. And total 25 staff (02-CDMS, 01-DMS, 01-Hd.Typist and 21-ADS) are deployed in this section.

S.No	Name	Designation	Work Dealt
1	Sri N.B. Shankar	CDMS	In-charge of scrap yard, also working as CDMS rolling stock, Segregation of scrap and formation of lots, conducting survey committee, wherever necessary and putting up recommendations to competent authority for acceptance, Delivery of sold lots, Ensuring the compliance of quality policy and quality objective & Any other work assigned by superiors.
2	Sri Rishi Gupta	CDMS	Working as CDMS/Receipt/Scrap yard, deals with Segregation of scrap and formation of lots, Delivery of sold lots, preparation of analysis report for non-ferrous item, audit reply related to scrap yard etc.
3	Sri S.P.Sinha	DMS	Working as CDMS/Receipt/Scrap yard, deals with accountal of scrap, Segregation of scrap and formation of lots, Delivery of sold lots, monitoring of unloading work from railway wagons etc.
4	Sri Srinivas Rao	Hd. Typist	Preparation of lot register, preparation of I/Note, Preparation of Gate pass, other typing work.
5	Sri Reshma	ADS	CRSL and DS-8 clearance
6	Sri Kanti Ku. Markande	ADS	Registration of DS-8 and all Misc. work.
7	Sri Sunil Saurabh	ADS	Assisting to CDMS/Elect. for all works related to ward.
8	Sri Tukeshwar Sinha	ADS	Assisting to CDMS/RS for all works, Placement of wagons and other misc. work
9	Sri Shiv Prasad Nayak	ADS	Loading and unloading of scrap materials and shifting as and when required.
10	Sri Muzbal Mandal	ADS	Loading and unloading of scrap materials and shifting as and when required.

280630(2)/2021/O/o. SDGM/HQ/SECR

11	Sri Haseen Kumar	ADS	Loading and unloading of scrap materials and shifting as and when required.
12	Sri Rajkeshwar Singh Yadav	ADS	Loading and unloading of scrap materials and shifting as and when required.
13	Sri C.S.Manjhi	ADS	Loading and unloading of scrap materials and shifting as and when required.
14	Sri Lalji Meena	ADS	House keeping work.
15	Sri Raja Vishwakarama	ADS	Loading and unloading of scrap materials and shifting as and when required.
16	Sri Champeshwar Mirdha	ADS	Loading and unloading of scrap materials and shifting as and when required.
17	Sri Santosh Kumar Khelare	ADS	Loading and unloading of scrap materials and shifting as and when required.
18	Md. Farooq	ADS	Works related to incoming of wagons at Ex-Yard
19	Sri Lalit Manjhi	ADS	Loading and unloading of scrap materials and shifting as and when required.
20	Sri P. Janardan Rao	ADS	Loading and unloading of scrap materials and shifting as and when required.
21	Sri Santosh Kumar	ADS	Housekeeping work.
22	Sri Sanjay Baya	ADS	Loading and unloading of scrap materials and shifting as and when required.
23	Sri Shambhu Ku. Rai	ADS	Loading and unloading of scrap materials and shifting as and when required.
24	Smt. Kusum Bai	ADS	Housekeeping
25	Sri Ashwini Kumar	ADS	Assisting to CDMS/C&W for all works related to ward.

2.4.14 Sales Section:-

Sales section deals with Publishing of auction catalogue, Misc. Correspondence to HQ on sales matter, Submission of various statement and reports, Arbitration cases, FDP and BSV extension, Preparation of Notes on scrap sales related matter, Creation of lot, Arbitration and court cases, misc. correspondence, Sale tax activities work, TCS, EMD related work, submission of challan, housekeeping activities etc. And total 06 staff (01-Ch. OS, 02-OS, 01-Sr.Clerk and 02-ADS) are deployed in this section.

S.No	Name	Designation	Work Dealt
1	Sri H.K.Sahu	Ch.OS	Publishing of auction catalogue, Misc. Correspondence to HQ on sales matter, Submission of various statement and reports, Arbitration cases, FDP and BSV extension, Preparation of Notes on scrap sales related matter.
2	Sri Ram Ku. Yadav	OS	Creation of lot, Arbitration and court cases, misc. correspondence
3	Sri Ranjeet Kumar	OS	Sale tax activities work.
4	Sri Chandra Shekhar Roy	Sr.Clerk	TCS, EMD related work, Misc. work.
5	Sri Balram Yadav	ADS	To assist in various works of section, filing work, submission of challan, housekeeping work
6	Hussain Khan	ADS	To assist in various works of section , Pay office related work, housekeeping work.

2.4.15 Special Gang:-

Special section deals with collection of materials from other depot, collection

280630(2)/2021/O/o. SDGM/HQ/SECR

of materials from parcel, loading & unloading of materials at the time of receipt and issue, depot maintenance work and Housekeeping work. And total 18 ADS are deployed in this section.

S.No	Name	Designation	Work Dealt
1	Smt. Mangani Bai	ADS	Housekeeping work
2	Smt. Pyari Bai	ADS	
3	Smt. Kumari Bai	ADS	
4	Smt. Durga Yadav	ADS	
5	Smt. Savitri Rawat	ADS	
6	Smt. Gunamati	ADS	
7	Smt. Yashoda	ADS	
8	Smt. D. Urmila	ADS	
9	Sri Chaganlal	ADS	
10	Sri Dhalendra Kumar	ADS	Collection of materials from other depot, collection of materials from parcel, loading & unloading of materials at the time of receipt and issue, depot maintenance work, other misc. work.
11	Sri Ajit Kumar Singh	ADS	
12	Sri Surjya Chandra Biyas	ADS	
13	Sri Tulsiram Devdas	ADS	
14	Sri Mukesh Ku. Bramhe	ADS	
15	Sri Kamal	ADS	
16	Sri P.Sai Jagdish	ADS	
17	Ajeet Kumar	ADS	
18	Pranay S.Meshram	ADS	

2.4.16 50 MT Rail Weigh Bridge:-

01 ADS is utilized as operator of 50MT Rail weigh bridge.

S.No	Name	Designation	Work Dealt
1	Sri Santosh Kumar	ADS	Working as operator of weigh bridge

2.4.17 30 MT Rail Weigh Bridge:-

01 ADS is utilized as operator of 30MT Rail weigh bridge.

S.No	Name	Designation	Work Dealt
1	Imran Ahamad Sami	ADS	Working as operator of weigh bridge

2.4.18 Non Ferrous Godown:-

02 ADS are utilized to assist In-charge of ward at the time of receipt of non-ferrous scrap, segregation of non-ferrous scrap, preparation of non-ferrous lot, maintenance of registers, closing/sealing/opening of godown.

S.No	Name	Designation	Work Dealt
1	Sri A.K. Mourya	ADS	To assist In-charge of ward at the time of receipt of non-ferrous scrap, segregation of non-ferrous scrap, preparation of non-ferrous lot, maintenance of registers, closing/sealing/opening of godown etc.
2	Sri Santosh Singh	ADS	

2.4.19 Confidential Section:-

01 Clerk Cum Typist is Working as confidential assistant of Dy.CMM(S)/GSD/R and

280630(2)/2021/O/o. SDGM/HQ/SECR

dealing with APAR records, D&A related works.

S.No	Name	Designation	Work Dealt
1	Sri Gopal Kesari	Clerk Cum Typist	Working as confidential assistant of Dy.CMM(S)/GSD/R, APAR records, D&A related works.

2.4.20 Establishment Section:-

All Establishment related activities of five Store depots; RWSS/Raipur, GSD/NGP, DLS/NGP, GSD/BSP & Sr. DMM/BSP are centrally carried out at GSD/Raipur. Total 07 staff (05-Ministerials and 02 ADS) are deployed in Establishment section. 03 Ch. OS and 02 OS (of Personnel department) are dealing with Establishment works of Store section. Preparing of Bills, TA, settlement of quarters, PF related matters, replies to audit/account objections. dealing with Union matters, arranging examinations for selection and non-selection posts & MACP. dealing with confidential matters in connection with vigilance case, theft case etc. maintain seniority list, dealing with DAR, Court matters and all other correspondences etc.

02 ADS are utilized to assist in Bills, T.A, Settlement, Quarters, PF, typing works and Housekeeping works at Establishment Section.

S.No	Name	Designation	Work Dealt
1	Sri Rajrindra Burh	Ch.OS	Overall incharge. Look after recruitment, settlement, Roster, Pension Adalat and review of service sheet, deal with confidential matter including Reservation.
2	Sri H. Martin	Ch.OS	All types of NOC, PNM, D&A, Court cases, Pass and PTO section.
3	Sri A. P. Minz	Ch.OS	Cadre, MCDO/PCDO, Non-selection, Selection, MPP, HQ reference, general correspondence and reauthorization.
4	Sri N.K.Pathak	OS	Bill Unit No. 04210(NG) and look after Quarter cell, PF section and Grievances Cell.
5	Sri Umesh Chandra Kunwar	OS	Bill Unit No. 04350(GAZ) and look after Quarter cell, PF section, Work related chartered Accountant regarding Income Tax and SBF Fund related matters.
6	Sri Ram Sagar Kashyap	ADS	Assist in Bills, T.A, Settlement, Quarters, P.F and other typing works.
7	Sri Girdhar Sahu	ADS	To assist misc. works of section, Housekeeping works Etc.
*03 Ch. OS and 02 OS of Personnel department are deployed in this section..			

2.4.6 Section-wise deployment of Staff:-

	CDMS/DMS	Ministerial	Technician	ADS/GAS/B/Peon	Total
General section	01	03	00	08	12
Time Office	00	00	02	00	02
Dispatch Section	00	00	00	02	02
Receipt section	01	01	00	03	05
Ward-2010	01	00	00	03	04

280630(2)/2021/O/o. SDGM/HQ/SECR

Ward-2011	01	00	00	03	04
Ward-2012	01	00	00	01	02
Ward-2013	00	01	00	00	01
Ward-2014	01	00	00	03	04
Ward-2015	01	00	00	02	03
CAS Section	00	06	00	02	08
PRS Section	00	00	08	00	08
Scrap Section	03	01	00	21	25
Sales Section	00	04	00	02	06
Special Gang	00	00	00	18	18
50 MT Rail Weigh Bridge	00	00	00	01	01
30 MT Rail Weigh Bridge	00	00	00	01	01
Non-Ferrous Section	00	00	00	02	02
Confidential Section	00	01	00	00	01
Establishment Section	00	05	00	02	07
Total	10	22	10	74	116

2. 5 Status of Outsourced Activities carried out at GSD Store:-

Sr.No	Name of work
1	Hiring of Crane mounted battery operated platform Lister Truck for movement of materials from one location to another.
2	Hiring of Diesel operated Fork Lifter Cap 2.0 Ton for Lifting, shifting of heavy materials from one location to another.
3	Hiring of Vehicle for the use of Dy.CMM/GSD/R
4	Hiring of multi utility Pick Van for GSD/R
5	Cleaning Contract for 09 Toilets and Canteen of GSD/Raipur
6	Hiring of 01 No. Road crane capacity 10 MT for unloading, loading and shifting of Railway scrap materials from Railway wagon, lorries etc.
7	Road transport contract for transportation of Railway materials.

2.6.0 List of Materials at GSD Store:-

GSD Store has 06 wards (Ward No.-2010, 2011, 2012,2013, 2014 and 2015) where all Stock and Non-Stock, Safety and non-safety materials are stored.

2.6.1**WARD NO-2010**

Sr	Item Description	V/S	ABC	CPMM	AAC	STOCK	STK/MM	DUES/CY	DUES/NY	Stk.Val	BAR	CONSP	LYrISS
1	ENAMELS POST OFFICE RED	N	B2	6	1200	240	2.4	0	0	30616	127.57	100	1740
2	ENAMELS WHITE	N	B1	6	3600	760	2.5	0	0	98140	129.13	700	2640
3	PAINT R. M. BLACK LEAD FR	N	C1	6	1500	1700	13.6	0	0	147573	86.81	300	1400
4	ENAMEL LEMON INTERIOR FIN	N	C1	2	0	40	0	0	0	5003	125.08	0	460
5	PAINT R. M. DARK ADMIRAL	N	C1	6	0	20	0	0	0	2245	112.23	0	1900
6	ENAMELS GRASS GREEN	N	C1	6	1500	980	7.8	0	0	138596	141.42	300	2620
7	PAINT ALUMINIUM	N	B1	2	3500	140	0.5	0	0	18925	135.18	400	3940
8	PAINT SATEN BLUE	N	C1	2	1200	1220	12.2	0	0	171278	140.39	280	920
9	PAINT AIRCRAFT BLUE	N	B2	6	1800	120	0.8	0	0	14714	122.62	420	1940
10	ENAMELS BRILLIANT GREEN	N	B2	6	2000	120	0.7	0	0	13984	116.53	340	2620
11	ENAMEL BRUSHING.INT.GOLDE	N	B2	6	2000	1080	6.5	0	0	141458	130.98	340	2100
12	ENAMELS SIGNAL RED	N	C1	6	2000	1240	7.4	0	0	169261	136.5	460	1840
13	ENAMELS SYTHETIC GULF RED	N	C1	2	1500	780	6.2	750	0	113157	145.07	480	1780
14	PAINT ENAMEL SYNTHETIC EX	N	B1	6	4000	20	0.1	3792	0	3571	178.53	0	3760
15	SHELL CARNEA/41 SPINDLE	N	B1	4	4000	1680	5	0	0	119843	71.34	1050	5670

280630(2)/2021/O/o. SDGM/HQ/SECR

16	OIL LUBRICATING AXLE MEDI	N	A	4	40320	210	0.1	20160	0	12143	57.82	10080	46800
17	S.S MULTIGRADE 20/W/40 OR	N	C1	4	6090	1890	3.7	0	0	173956	92.04	1680	4410
18	OIL HYDRAULIC TO IS:10522	N	B2	4	4000	3360	10.1	0	0	261665	77.88	4200	3150
19	GREASE GRAPHITE	N	A	4	24000	546	0.3	14924	0	48371	88.59	6188	29666
20	GREASE GRAPHITE GRADE I T	N	A	4	26000	7098	3.3	0	0	583869	82.26	4004	22568
21	BALMEROL MULTINGREASE LL/	N	A	1	6000	182	0.4	2562	1456	34973	192.16	0	1092
22	TRANSFORMER OIL	N	B1	4	3000	210	0.8	2730	0	15362	73.15	0	210
23	OIL KEROSENE GRADE/II	N	A	4	48	10.6	2.7	36	0	539898	50933.75	14	35.8
24	ALUMINO FERRIC	N	B1	4	180000	126500	8.4	50000	0	1506747	11.91	56080	194710
25	BLECHING POWDER STABLE	N	B2	4	18000	800	0.5	15000	0	26508	33.14	11825	19990
26	GRAPHITE FLAKES NO 1	N	C1	5	2500	360	1.7	1580	0	24930	69.25	560	2480
27	PARADICHLAR BENZOL	N	C2	5	0	96	0	0	0	13934	145.14	30	30
28	SOAP LANDRY IN BRAS 50 X	N	C1	5	4000	23	0.1	5000	0	915	39.77	10	4631
29	TOILET SOAP	N	N	4	0	2787	0	0	0	40124	14.4	273	0
30	DE/ODORISING/CUM/DISINFEC	N	C1	5	800	345	5.2	400	0	14854	43.05	755	2345
31	LIQUID ANTISEPTIC DETTOL	N	C1	3	0	195	0	0	0	22121	113.44	220	555
32	FOG SIGNAL DETONATOR	S	A	4	6890	4620	8	6800	0	764338	165.44	1400	6998
33	FIRST AID BOX	N	C2	1	0	0	0	0	0	0	233	1	5
34	TREASURY REMITTANCE NOTE	N	C1	6	600	600	12	0	0	27517	45.86	0	750
35	PAPER BROWN 73.5X114 CM 8	N	C2	6	20	17	10.2	0	0	9116	536.21	0	28
36	PAPER CARBON PENCIL 20.5X	N	C1	6	300	692	27.7	0	0	67622	97.72	127	429
37	COMP BLANK SECR10"12"1PRT	N	C1	5	120	480	48	0	0	153630	320.06	0	267
38	COMP BLANK SECR15"12"1PR	N	C1	5	150	71	5.7	0	0	35784	504	0	272
39	COMP BLANK SECR15"12"2PRT	N	B2	4	85	2	0.3	85	0	2395	1197.25	0	93
40	PLAIN COPIER PAPER 210 X	N	A	4	9243	913	1.2	5000	0	186106	203.84	1625	8142
41	PHOTO COPIER PAPER 420 MM	N	C1	5	250	153	7.3	250	0	58766	384.09	1	297
42	COMPUTER STATIONERY BLANK	N	B1	4	150	41	3.3	0	0	62995	1536.47	0	280
43	COMP BLANK SECR10"12"2PRT	N	B2	4	500	220	5.3	0	0	183507	834.12	1	436
44	COMP BLANK SECR15"12"3PRT	N	B1	4	22	26	14.2	0	0	62950	2421.15	0	45
45	PASSENGER CLASSIFICATION	N	C2	6	7000	9900	17	0	0	12776	1.29	0	7000
46	COMPLAINT BOOK	N	C1	6	400	508	15.2	0	0	20953	41.25	0	500
47	GOODS RECEIVED AND DELIVE	N	C1	6	100	188	22.6	0	0	22983	122.25	0	250
48	COMBINE TRAIN REPORT / FO	N	B2	4	150000	65600	5.2	0	93000	66513	1.01	43000	155300
49	SHUNTING FORM(PRINTING OF	N	C1	5	10000	3100	3.7	19900	0	6158	1.99	0	15000
50	CONTROL ORDER BOOK (BOOK	N	D	10	0	0	0	0	0	0	34.75	0	0
51	RESERVATION SLIP IN FORM	N	B2	4	2200000	5887500	32.1	0	0	1325609	0.23	500	2127000
52	SHUNTING ORDER IN FORM OF	N	C1	5	3500	2467	8.5	0	0	54024	21.9	530	3880
53	SIGNING OFF REGISTER (BOO	N	C2	6	50	156	37.4	0	0	6805	43.62	0	35
54	SIGN ON REGISTER FOR GUAR	N	C2	6	50	120	28.8	0	0	5236	43.63	0	35
55	STATION MASTER DIARY BOOK	N	C1	5	3200	1011	3.8	2500	0	30808	30.47	400	3315
56	TRAIN SIGNAL REGISTER OF	N	C1	5	1500	698	5.6	770	1500	43209	61.9	365	1385
57	AUTHORITY TO PASS SIGNAL	N	C2	6	300	175	7	0	0	6640	37.94	30	180
58	CAUTION ORDER,SIZE A/4, F	N	C1	5	1000	2255	27.1	0	0	50575	22.43	100	1350
59	GUARD MEMO BOOK SIZE/A/4,	N	C2	5	150	1138	91	0	1000	34768	30.55	10	150
60	PRIVATE NUMBER BOOK,SIZE	N	C1	6	4000	4454	13.4	0	0	19887	4.46	0	4750
61	URGENT ORDER BOOK, SIZE A	N	C1	6	200	94	5.6	150	0	5178	55.08	90	412
62	PF APPLICATION FORM PRINT	N	C2	6	8000	140	0.2	11600	0	164	1.17	355	10245
63	TRAVELLING ALLOWANCE JOUR	N	C1	6	1200	477	4.8	1000	0	15961	33.46	94	1103

280630(2)/2021/O/o. SDGM/HQ/SECR

64	LETTER DELIVERY BOOK (DAK	N	C2	6	300	482	19.3	0	0	9800	20.33	52	427
65	STOCK VERIFICATION SHEET	N	C2	10	0	3	0	0	0	132	43.97	0	35
66	ADVICE NOTE FOR RETURNED	N	C2	6	400	30	0.9	500	0	1107	36.9	47	381
67	REGISTER RULLED/1QR.	N	C1	5	0	2204	0	0	0	45503	20.65	483	3605
68	PAD PERFORATED PLAIN 17.1	N	C1	6	1000	315	3.8	665	0	10534	33.44	197	990
69	PAD PERFORATED PLAIN 11CM	N	C1	6	1000	1157	13.9	0	0	22579	19.52	211	1301
70	S & T FAILURE MEMO,SIZE A	N	D	11	0	0	0	0	0	/1	9.55	0	0
71	ATTENDANCE REGISTER , FOR	N	C1	6	50000	37426	9	5550	0	31840	0.85	6599	75926
72	MUSTER ROLL FORM IN THE F	N	C1	6	25000	28722	13.8	0	0	22177	0.77	2050	25590
73	MUSTER ROLL (S) IN THE FO	N	C2	6	15000	28405	22.7	0	0	25264	0.89	1400	14205
74	CONTINGENT BILL FORM IN	N	C2	6	30000	56675	22.7	0	0	12130	0.21	1510	28085
75	REQUISITION FOR MONEY VAL	N	C2	10	0	10	0	0	0	448	44.8	2	60
76	REGISTER OF LETTERS DESPA	N	C2	6	200	154	9.2	0	0	7202	46.76	4	209
77	REGISTER OF LETTER RECEIV	N	C2	6	100	231	27.7	0	0	21007	90.94	6	127
78	SERVICE BOOK FOR CLASS II	N	C2	8	0	0	0	0	0	0	12.64	0	407
79	BOOKING REGISTER FOR TTE	N	C2	11	0	160	0	0	0	4410	27.56	0	50
80	GUARD CALL BOOK (BOOK OF	N	D	12	0	0	0	0	0	0	15.8	0	0
81	INDENT FOR PASSENGER(BOOK	N	C2	12	0	3365	0	0	0	97272	28.91	0	50
82	INDEX BOOK ONWARD (BOOK O	N	C2	12	0	170	0	0	0	4887	28.75	0	50
83	MEMO FOR TAKING/HANDING O	N	C2	12	0	7529	0	0	0	191437	25.43	0	100
84	TN REGISTER (BOOK OF 100	N	D	12	0	0	0	0	0	0	40.13	0	0
85	UNLOADING TALLY REGISTER	N	C2	12	0	837	0	0	0	28478	34.02	0	100
86	REMINDER CAUTION ORDER IN	N	C1	6	2000	1390	8.3	0	1370	20810	14.97	250	2240
87	DAILY TRAIN CASH/CUM/SUMM	N	C1	6	200	310	18.6	0	0	22884	73.82	0	500
88	REQUISITION AND ISSUE NOT	N	C2	6	1000	786	9.4	0	0	14001	17.81	156	603
89	REQUISITION FOR STORES IN	N	C2	9	0	40	0	0	0	1600	40	0	65
90	REQUISITION FOR STORES IN	N	C2	10	0	11	0	0	0	355	32.31	0	10
91	TALLY BOOK IN THE FORM OF	N	C2	9	0	24	0	0	0	1102	45.93	0	20
92	LOADING PROGRAMME OF SCRA	N	C2	10	0	0	0	0	0	0	14.97	0	50
93	LOADING MEMO IN THE FORM	N	C2	10	0	22	0	0	0	1212	55.09	5	20
94	DEPOT TRANSFER (REQN., IS	N	C2	10	0	0	0	0	0	0	44.3	0	77
95	COMBINED ISSUE AND RECOUP	N	C2	9	0	114	0	0	0	4564	40.04	0	10
96	SALE SUSPENSE ISSUE NOTE	N	C2	11	0	8	0	0	0	93	11.68	0	2
97	GATE ATTENDANCE CARD, FOR	N	C2	6	10000	26441	31.7	0	0	18147	0.69	0	15000
98	DRIVER LOG BOOK (ALCO LO	N	C1	6	300	404	16.2	0	0	22193	54.93	100	500
99	TRIP CARD (FOR ALCO+ WDG4	N	C2	6	200	165	9.9	0	0	2922	17.71	340	162
100	DRIVER LOG BOOK (ALCO LO	N	C1	6	600	688	13.8	0	0	42091	61.18	150	900
101	MEASUREMENT BOOK EM/10	N	C1	6	1000	867	10.4	0	0	29433	33.95	12	961
102	REGISTER RULLED /4QR.	N	B2	4	2000	2763	16.6	0	0	192704	69.74	309	2902
103	REGISTER RULLED/3QR.	N	C1	5	2000	1007	6	0	0	58376	57.97	376	2729
104	REGISTER RULLED/2QR.	N	C1	5	3000	3111	12.4	0	0	126259	40.58	628	3593
105	NOTE SHEET BLOCK LIGHT GR	N	C1	5	300	355	14.2	0	0	16846	47.45	30	218
106	APPLICATION FOR PRIVILEGE	N	C2	6	80000	38695	5.8	38800	38800	6546	0.17	7950	63205
107	APPLICATION FORM FOR PASS	N	C2	6	80000	114850	17.2	0	0	19729	0.17	4870	85390
108	MED/C/8 (PHYSICAL FITNES	N	C2	6	100	40	4.8	100	0	2940	73.5	0	60
109	FILE FOLDER HARD WITH SEC	N	B2	4	5000	945	2.3	2155	0	22675	23.99	1373	7130
110	FILE FOLDER SOFT WITH SEC	N	C1	5	5000	3893	9.3	2673	4423	45987	11.81	1017	7653
111	WAX SEALING BLACK	N	C1	5	1500	1900	15.2	0	0	106679	56.15	100	1440

280630(2)/2021/O/o. SDGM/HQ/SECR

112	LEAVE APPLICATION FORM	N	C1	5	120000	176239	17.6	0	0	33839	0.19	17050	111381
113	SEALED GROOVED BALL BEARI	N	C1	5	0	220	0	0	0	37624	171.02	0	1744
114	BALL BEARING	N	C2	10	0	0	0	0	0	0	117.86	0	0
115	FIRE EXTINGUISHER	N	B2	4	300	283	11.3	0	0	365204	1290.47	168	423
116	FIRE BUCKET GALVD. MILD S	N	C1	5	200	214	12.8	0	0	71489	334.06	20	144
117	HIGH SPEED DIESEL (HSD)	N	C1	5	6000	800	1.6	0	0	56928	71.16	200	4550
118	HIGH SPEED DIESEL OIL (AU)	N	C1	2	0	0	0	0	0	0	70.42	0	400

2.6.2**WARD NO-2011**

Sr	Item Description	V/S	ABC	CPMM	AAC	STOCK	STK/MM	DUES/CY	DUES/NY	Stk.Val	BAR	CONSP	LYrISS
1	UTP CAT/6 CABLE	N	C1	3	13400	11100	9.9	0	0	196406	17.69	3203	8445
2	CORD 8 WAY	N	C2	2	0	0	0	0	0	0	83.07	0	103
3	MODEM 2 MBPS (2 MBPS DIGI	N	B1	3	100	11	1.3	0	0	305207	27746.09	17	105
4	48 V SMPS CHARGER (48 V/2	N	A	3	22	1	0.5	0	0	104351	104351.4	2	24
5	LAN EXTENDER WITH ALL ACC	N	B2	4	120	161	16.1	160	0	949764	5899.15	0	99
6	6 PIN EMERGENCY SOCKET T	S	C1	2	150	20	1.6	166	0	9443	472.13	44	95
7	PUSH BUTTON TELEPHONE WIT	N	B2	3	800	616	9.2	0	0	430313	698.56	312	897
8	ELECTRONIC MAGNETO TELEPH	V	B1	3	1225	291	2.9	0	0	563873	1937.71	400	1365
9	ELECTRONIC PUSH BUTTON TE	N	C1	4	420	80	2.3	255	210	26068	325.85	120	465
10	DTMF 4 WIRE WAY STATION E	V	B1	3	381	4	0.1	380	0	15348	3837.05	16	380
11	4 WIRE/2 WIRE COMBINED PO	S	C1	2	90	103	13.7	0	0	191881	1862.92	10	60
12	TELEPHONE SWITCH BOARD CA	N	C1	4	3000	400	1.6	2450	0	17010	42.53	400	1750
13	SWITCH BOARD CABLE 20 PAI	N	C1	3	1000	615	7.4	400	0	50671	82.39	0	535
14	TELEPHONE S/B CABLE 5	N	C1	3	4500	200	0.5	3100	0	4432	22.16	400	2895
15	24 FIBER ARMOURED OPTICAL	N	B1	1	0	2.023	0	0	0	190733	94282.04	0	20.27
16	J F CABLE 0.63MM 50PAIR T	N	C2	3	0	0	0	0	0	0	349544.8	0	3.17
17	P.I.J.F CABLE 0.63MM 1	N	C1	3	0	0	0	0	0	0	104464	0	3.01
18	RR CELL/6/1 TO IRS:S/95/9	V	B1	3	5000	4494	10.8	0	0	2428625	540.41	728	5443
19	48 V SMPS CHARGER (48 V/2	N	D	3	0	0	0	0	0	0	103250	0	0
20	THERMOSHRINK JOINTING KIT	N	B1	5	380	8	0.3	328	0	25005	3125.59	32	457
21	BATTERY NI/MH FOR GP/328,	V	A	3	3600	326	1.1	0	0	338051	1036.97	450	3272
22	LINE INTERACTIVE UPS	N	C1	3	76	0	0	76	0	0	1770.32	2	72
23	OFC JOINT ENCLOSER (24 FI	N	C1	4	73	26	4.3	0	0	36039	1386.1	6	61
24	CLIP LOCK BAR (INSIDE)60	N	C1	4	0	314	0	0	0	688486	2192.63	0	24
25	WIRE ADJUSTING SCREW 12 M	N	C2	6	60	138	27.6	0	0	24530	177.75	0	12
26	CABLE SINGLE CORE 3/0.75	N	C1	4	2500	2800	13.4	0	0	44971	16.06	100	3300
27	WIRE ROPE 7X7X19MM	N	C1	4	1000	3035	36.4	0	0	411003	135.42	0	350
28	PVC INSULATED GALVANIZED	N	B2	5	0	6650	0	0	0	811207	121.99	3100	7588
29	RIVET B/F	N	C2	8	0	1850	0	0	0	5200	2.81	0	50
30	SLEEVE FOR WIRE ROPE	N	C2	8	0	3098	0	0	0	81665	26.36	0	50
31	THIMBLE I.G	N	C2	8	200	3756	225.4	0	0	24328	6.48	0	200
32	GI BOOM FOR ELECTRIC LIF	V	B1	3	300	59	2.4	0	0	387223	6563.11	38	333

280630(2)/2021/O/o. SDGM/HQ/SECR

33	60 KG POINT SCREW LOCKING	N	C1	4	20	64	38.4	0	0	72155	1127.43	28	10
34	TAIL BOARD , IRON PLATE 1	V	C2	3	100	273	32.8	0	0	47203	172.9	0	100
35	SIGNAL CONDITIONER CARD N	V	B1	1	0	3	0	14	0	92041	30680.2	0	46
36	SIGNAL CONDITIONER CARD N	V	B2	1	0	4	0	0	0	122721	30680.22	1	26
37	MICROCONTROLLER LOGIC CAR	V	B1	1	0	5	0	0	0	218032	43606.44	0	40
38	MICROCONTROLLER LOGIC CAR	V	B1	1	0	4	0	0	0	174128	43532.07	1	34
39	EVENT LOGGER CARD NO. 5 F	V	C1	1	5	5	12	0	0	153406	30681.24	1	10
40	MODEM CARD NO. 6 FOR CEL	V	B1	1	0	5	0	0	0	153405	30680.91	1	64
41	RELAY DRIVER CARD NO. 7 F	V	B2	1	12	13	13	0	0	398867	30682.04	2	17
42	DC/DC CONVERTER CARD NO.8	V	B2	1	18	2	1.3	20	0	37760	18880.01	0	31
43	WEB DETECTOR (EACH SET CO	V	C1	1	12	9	9	0	0	371701	41300.09	0	10
44	RESET BOX FOR CEL MAKE SI	V	B2	1	12	2	2	12	0	87321	43660.62	0	18
45	MODEM FOR SIEMENS MAKE MS	S	B2	2	4	2	6	0	0	156043	78021.47	0	15
46	BROAD BAND TRANSFORMER FO	S	C1	2	0	2	0	0	0	156126	78062.9	1	1
47	RESET BOX COMPLETE FOR ON	S	D	2	0	0	0	0	0	0	26258.07	0	0
48	OUT DOOR LIGHTNING PROTEC	V	C1	1	12	9	9	14	0	127171	14130.15	2	3
49	BANDPASS MODULE S25552/B7	V	C1	1	16	1	0.8	15	10	46932	46931.68	0	1
50	RDSO/SPN/176/2005, VER/2	V	C1	1	0	19	0	0	0	1245992	65578.5	9	1
51	WHEEL DETECTION SENSOR WI	V	C1	1	16	1	0.8	30	0	240596	240595.9	0	2
52	BLOCK INPUT OUTPUT CARD (V	B1	1	12	4	4	15	0	676851	169212.7	1	13
53	PROCESSING AND MONITORING	S	C1	2	0	0	0	0	0	0	124640.8	0	2
54	POWER SUPPLY MODULE FOR S	V	B2	1	6	1	2	0	0	172726	172725.9	0	8
55	SERIAL INTERFACE CARD (SI	S	D	2	0	0	0	0	0	0	160707	0	0
56	CONTROL AND DISGNOSTIC BO	V	C1	1	12	8	8	10	0	631321	78915.16	4	5
57	AMPLIFIER ,TRIGGER AND BA	V	B1	1	11	11	12	0	0	1422063	129278.5	4	17
58	TRACK FEED RESISTANCE 7.5	V	C1	1	150	236	18.9	0	0	64492	273.27	80	110
59	TRANSFORMER MODULE OF IPS	V	D	1	0	0	0	0	0	0	9967.72	0	0
60	UNDER GROUND RAILWAY SIGN	N	B2	1	0	0	0	0	0	0	255597.6	0	2.46
61	CABLE PVC 6 CORE	N	B1	3	0	4.051	0	0	0	485188	119770	0	17.63
62	UNDER GROUND RAILWAY JELL	N	D	5	0	0	0	0	0	0	271595.5	0	0
63	CELL ACCUMULATOR 2V 40 AH	V	B2	3	1800	1	0	1200	1410	9419	9418.98	0	655
64	LEAD ACID SECONDARY CELL/	V	A	3	1870	283	1.8	797	0	1415446	5001.57	110	1608
65	SECONDARY CELL 2 V X 80	V	A	3	1224	12	0.1	870	0	75750	6312.51	50	1108
66	BATTY CHARGER 230/12 V,10	V	C1	3	10	2	2.4	8	0	42388	21193.92	0	19
67	BATTY CHARGER 110/6 V	V	B1	3	360	433	14.4	0	0	1321391	3051.71	0	520
68	ELECTRIC POINT DETECTOR(E	V	C1	3	0	0	0	0	0	0	9371.33	0	17
69	GROUND CONNECTION AND INS	N	C1	5	50	1	0.2	50	20	6549	6549.28	0	51
70	RELAY AC IMMUNE PLUG IN T	V	B2	1	300	43	1.7	50	0	154687	3597.36	16	314
71	RELAY POINT CONTACTOR UN	S	B1	2	0	44	0	0	0	702368	15962.91	0	99
72	RELAY NON/AC IMMUNE PLUG	V	C1	1	240	218	10.9	30	120	577675	2649.89	8	235
73	UNIVERSAL PLUG IN TYPE AC	V	C1	1	408	13	0.4	134	0	45765	3520.42	0	78
74	UNIVERSAL LED ECR MINI GR	S	D	2	0	3	0	0	0	16245	5415	1	0
75	KEYLOCK RELAY WITH 01 NO.	S	C2	2	0	0	0	0	0	0	8980.76	0	1
76	TIME ELEMENT RELAY TYPE R	V	C1	3	12	8	8	0	0	81769	10221.11	0	18
77	POINT CHAIN GROUP SEIMENA	S	C1	2	3	3	12	0	0	86398	28799.49	0	2
78	ROUTE GROUP SEIMENS MAKE	V	C1	3	7	13	22.3	0	0	732326	56332.76	0	9
79	RRI POINT GROUP SEIMENS M	V	B2	3	0	27	0	0	0	2509180	92932.57	0	15
80	UNIVERSAL POINT GROUP TYP	S	B1	2	12	12	12	0	0	1138348	94862.37	0	20

280630(2)/2021/O/o. SDGM/HQ/SECR

81	SHUNT SIGNAL GROUP RELAY	S	C1	2	1	1	12	0	0	71143	71142.77	0	1
82	3 ASPECT SIGNAL GROUP REL	S	D	2	0	2	0	0	0	130950	65475.2	1	0
83	2 ASPECT SIGNAL GROUP REL	S	C1	2	0	0	0	0	0	0	58872.6	0	2
84	MINI GROUP (INTERLOCKED)	V	C1	3	20	19	11.4	0	0	190924	10048.63	0	20
85	MINI GROUP (BOTH AC IMMUN	V	C1	3	20	18	10.8	0	0	189295	10516.4	0	20
86	MINI GROUP (NEUTRAL) 60 V	V	C1	3	15	45	36	0	0	366900	8153.32	0	16
87	MINI GROUP (NEUTRAL) 60 V	V	C1	3	6	12	24	0	0	86810	7234.19	0	6
88	MINI GROUP (NEUTRAL) 60 V	V	C1	3	6	12	24	0	0	110139	9178.29	0	6
89	RELAY 3 POSITION 77 OHMS	V	C1	1	6	3	6	0	0	24729	8243.15	2	5
90	LED SIGNAL SHUNT ASPECTS	S	B1	2	540	322	7.2	0	0	1826698	5672.98	344	390
91	LED SIGNAL LIGHTING UNIT	S	B1	2	540	180	4	260	0	1022829	5682.39	220	328
92	LED SIGNAL RED ASPECT WIT	S	A	2	540	50	1.1	287	0	424251	8485.02	34	574
93	LED SIGNAL GREEN ASPECT W	S	A	2	540	48	1.1	305	200	458542	9552.96	14	483
94	LED SIGNAL YELLOLW ASPECT	V	A	1	540	31	0.7	398	200	262997	8483.77	19	402
95	LED SIGNAL CO/ON ASPECT W	V	B2	1	90	32	4.3	179	0	229990	7187.18	10	156
96	ELECTRIC POINT OPERATING	S	A	2	60	9	1.8	0	0	548444	60938.17	1	71
97	INVERTOR ELECTRONICS MODUL	V	C1	1	0	0	0	0	0	0	42075.5	0	9
98	VCOR RELAY FOR ELECTONIC	S	D	2	0	0	0	0	0	0	130862	0	0
99	RELAY AC IMMUNE PLUG IN T	V	B2	1	400	55	1.7	68	0	145950	2653.63	16	373
100	BATTERY CHARGER 5 AMP 12V	V	C1	3	0	0	0	0	0	0	20281.71	0	1
101	UNDER GROUND RAILWAY SIGN	N	B1	4	0	3.478	0	0	0	1151275	331016.3	4	7.11
102	UNDER GROUND RAILWAY SIGN	N	A	4	0	0	0	0	0	146445	335523.8	2	8.14
103	N.D.FUSE CARTRIDGE 2 AMP	N	C1	12	1600	113	0.8	2000	0	5267	46.61	100	1020
104	ND FUSE CARTRIDGE 4 AMP.	V	C1	1	2000	1800	10.8	0	0	85167	47.31	400	3800
105	WASHER NYLON TYPE/66	N	C2	10	1200	400	4	0	0	3213	8.03	0	200
106	LAMP 12 V /4.4 W TO SPEC.	N	C2	11	0	50	0	0	0	2993	59.85	0	50
107	SIGNAL LAMP 110/25W	N	C2	11	0	990	0	0	0	64361	65.01	0	100
108	CHANNEL PIN	N	C1	11	30000	1500	0.6	47500	0	3077	2.05	1000	27600
109	REALAY NON /AC IMMUNE PLU	V	B1	1	600	314	6.3	0	0	833499	2654.46	80	1048
110	RELAY AC IMMUNE PLUG IN T	V	B2	1	0	39	0	0	0	133713	3428.55	40	150
111	RELAY AC IMMUNE PLUG IN T	V	B2	1	500	433	10.4	0	0	1481485	3421.44	41	442
112	UNDER GROUND RAILWAY SIGN	N	B2	1	0	9.09	0	10	0	1719595	189174.3	0	7.03
113	WIRE I.G 8 SWG	N	B2	3	0	2094	0	1900	0	140835	67.26	1958	8213
114													
115	PHOWRAH 1.8 KG.	N	C1	3	200	468	28.1	0	0	70184	149.97	0	108
116	RAKE BALLAST	N	C1	2	800	425	6.4	0	0	131610	309.67	0	680
117	ABBRASIVE RAIL CUTTING ,D	N	A	12	1600	10	0.1	2000	0	8899	889.87	20	2030
118	BRUSHES PAINTS FLAT 75 MM	N	C1	11	2000	3	0	4000	0	224	74.59	22	988
119	OVAL, FERRULE BOUND BRUSH	N	C1	11	450	33	0.9	450	450	4114	124.66	5	238
120	BRUSHES PAINTS OVEL 3/0	N	C1	11	250	16	0.8	250	250	2163	135.19	5	149
121	BRUSHES BANISTER	N	C1	11	300	30	1.2	600	0	3180	106	24	187
122	HI SPEED STEEL HAND HACKS	N	C1	2	600	87	1.7	0	0	3742	43.01	37	536
123	BLADE HACKSAW 14TPI	N	C1	2	350	268	9.2	0	0	46126	172.11	3	260
124	BLADE,POWER,HACKSAW, 18SW	N	C1	7	200	1315	78.9	0	0	199207	151.49	6	100
125	HANDLE WOODEN HAMMER 915M	N	C2	7	0	90	0	0	0	3319	36.88	7	15
126	TAPE METRIC 30 METRES X 5	N	C1	8	74	2	0.3	107	0	665	332.51	0	74
127	AUGERS CARPENTER 14MM	N	C2	3	0	293	0	0	0	10750	36.69	0	100
128	NEUTRA INSTRTS 30MM	N	C1	12	0	90	0	0	0	76094	845.49	10	200

280630(2)/2021/O/o. SDGM/HQ/SECR

129	T/MAX TURNING UNIT LH	N	C2	3	12	17	17	0	0	20101	1182.41	1	14
130	T/MAX TURNING UNIT RH	N	C2	3	12	17	17	0	0	20100	1182.35	1	14
131	BOLTS M.S. M10 X 50 MM	N	C1	11	300	80	3.2	0	0	6081	76.02	100	245
132	BOLTS M.S. M12X 40 MM	N	C1	11	900	471.2	6.3	0	0	38502	81.71	250	924.3
133	BOLTS M.S. M12 X 50 MM	N	B2	11	1500	337.92	2.7	1337	0	23625	69.91	100	1245.52
134	BLACK HEX BOLTS&NUTS M12X	N	C1	11	1500	350	2.8	0	0	28378	81.08	757	2649.2
135	BOLTS M.S. M12 X 75 MM	N	C1	11	500	67.1	1.6	0	0	5529	82.39	200	655
136	BOLTS M.S. M16 X 50 MM	N	B2	11	1300	626.9	5.8	0	0	48481	77.33	300	2667.1
137	BOLTS M.S. M16 X 65 MM	N	C1	11	100	207.75	24.9	0	0	13899	66.9	8	180
138	BOLTS M.S. M16 X 75 MM	N	C2	11	400	265.36	8	250	0	18458	69.56	0	133
139	BOLTS M.S. M20 X 50 MM	N	D	9	0	0	0	0	0	0	62.95	0	0
140	BOLTS M.S. M20 X 65 MM	N	B2	11	4000	2250	6.8	0	0	160452	71.31	2420	4519.5
141	BLACK HEX BOLTS M.S.M20X7	N	C1	11	3500	431	1.5	2187	0	30637	71.08	755	4402
142	BOLT HEX M20X90 MM	N	B2	11	3000	862	3.4	0	0	62023	71.95	1574	4544.45
143	BOLTS M.S. M20X100 MM	N	C1	11	1000	193	2.3	0	0	13933	72.19	209	1495.9
144	BOLT WITH NUT M24X100 MM	N	C1	11	400	503	15.1	0	0	33683	66.96	0	143
145	RIVET M.S. 20 X 80 MM	N	B1	9	5000	450	1.1	2916	0	26288	58.42	2617	6149.03
146	RIVET M.S. 20 X 90 MM	N	B2	9	920	339	4.4	0	0	20245	59.72	600	2953
147	RIVET MS SNAP HD.20X100 M	N	C1	9	2000	741.6	4.4	0	0	49187	66.33	600	1096.6
148	RIVET M.S. 20X125 MM	N	C1	9	1600	150	1.1	320	0	9018	60.12	99	1042.55
149	PIN SPLIT CUTTER 6.3X63 M	N	D	7	0	3052	0	0	0	343915	112.69	540	0
150	PIN SPLIT COTTER 8X112 MM	N	C1	1	0	0	0	0	0	0	304.29	0	75
151	PIN SPILT COTTER STEEL10X	N	C1	1	108	5	0.6	148	0	2052	410.35	12	73.1
152	PIN SPLIT COTTER 10X125 M	N	C1	1	700	27	0.5	825	0	11764	435.69	49	918
153	PIN SPILT COTTER STEEL13X	N	C1	3	3	3	12	0	0	2684	894.5	1	4
154	PIN SPLIT COTTER 6.3X80 M	N	C1	1	150	33	2.6	150	0	4720	143.03	2	184
155	BULB HEAD COTTER 3.15X64	N	B2	1	450	300	8	0	0	153116	510.39	1	342.7
156	STUD FOR AXLE PULLY WITH	N	C2	12	100	103	12.4	0	0	6718	65.22	0	163
157	WASHER PLAIN PUNCH STEEL.	N	C1	11	600	66	1.3	0	0	5161	78.19	115	555
158	WASHER PLAIN PUNCH STEEL.	N	C1	11	1000	50	0.6	500	0	3391	67.82	107	1143
159	WASHER PUNCHED M27	N	C1	11	2000	733.1	4.4	0	0	51886	70.78	350	1650.4
160	WASHER MACHINED.M30	N	C1	11	2000	381	2.3	0	0	26072	68.43	550	958
161	WASHER M/39	N	C1	11	2000	226	1.4	1874	0	15984	70.73	1000	1657

2.6.3**WARD NO-2012**

Sr	Item Description	V/S	ABC	CPMM	AAC	STOCK	STK/MM	DUES/CY	DUES/NY	Stk.Val	BAR	CONSP	LYrISS
1	UNIVERSAL COUPLING 50 MM	N	C1	6	0	0	0	0	0	0	26.73	0	0
2	FLAP DOOR CHAIN LESS COTT	N	B2	1	900	140	1.9	0	0	4205	30.03	0	1060
3	COMPLETE ASSEMBLY OF SWIN	N	B2	5	6	2	4	0	0	14374	7186.9	2	0
4	LOCKING PLATE ROLLER BEAR	S	B1	3	16008	4000	3	0	0	74262	18.57	3866	22460
5	BOLSTER SPRING OUTER FOR	S	B1	3	72	26	4.3	60	15	20904	804	12	90
6	BOLSTER SNUBBER SPRING	S	B2	3	72	166	27.7	0	0	126198	760.23	43	123
7	INNER BOLSTER SUSPENSION	S	B1	3	84	56	8	0	0	42487	758.69	67	194
8	POLYURETHENE (PU) SIDE BE	N	A	4	36	58	19.3	0	0	313866	5411.47	0	120

~ 24 ~

280630(2)/2021/O/o. SDGM/HQ/SECR

9	SIDE FRAME KEY (FOR CARTR	S	A	4	11200	933	1	5405	0	116864	125.26	1311	15356
10	BOLSTER SPRING OUTER TO R	S	C1	3	84	66	9.4	0	0	61625	933.71	11	35
11	BOLSTER SPRING INNER FOR	S	C1	3	100	38	4.6	0	0	16057	422.54	40	48
12	BOLSTER SPRING SNUBBER FO	S	C2	3	36	167	55.7	0	0	136377	816.63	26	12
13	WEDGE FOR CASNUB BOX /N	S	C1	3	26	7	3.2	0	0	5564	794.84	4	14
14	KEY BOLT WITH NUT, SPRING	N	A	2	16000	7200	5.4	0	3219	173819	24.14	2570	21311
15	MODIFIED ELASTOMERIC PAD	S	A	3	8000	858	1.3	3952	0	1176445	1371.15	2458	7005
16	BOGIE CENTRE PIVOT BOTTOM	S	A	3	120	22	2.2	76	54	84620	3846.36	28	172
17	CENTRE PIVOT TOP	S	A	3	252	93	4.4	7	0	388974	4182.52	7	254
18	ADOPTER NARROW JAW	S	A	4	250	42	2	113	0	42359	1008.54	28	227
19	CONSTANT CONTACT SIDE BEA	S	A	3	300	43	1.7	0	0	180750	4203.49	7	86
20	PACKING FOR HEIGHT ADJUST	N	B2	2	600	17	0.3	2400	0	9242	543.63	33	685
21	KIT FOR MANGANESE STEEL L	N	B2	9	108	17	1.9	0	0	69913	4112.52	1	12
22	COUPLER ROD FOR BOXN HL R	N	B2	7	800	0	0	1438	0	0	372	0	0
23	LOAD TIE ROD FOR BOXN HL.	N	C2	4	0	9	0	0	0	6195	688.33	3	2
24	MAIN PULL ROD (CASNUB BOG	N	C2	10	0	0	0	0	0	0	1287.82	1	1
25	PULL ROD SUPPORT PULLY	N	C1	9	100	108	13	0	0	10656	98.66	16	26
26	PULL ROD SUPPORT V/BKT	N	C1	2	100	40	4.8	0	0	1330	33.26	0	20
27	TARE TIE ROD BOXN	N	C1	10	36	34	11.3	0	0	15143	445.37	0	21
28	MAIN PULL ROD ASSEMBLY (S	S	C1	3	10	13	15.6	0	0	6518	501.4	0	1
29	MAIN PULL ROD (LONG)	S	C1	4	24	18	9	0	0	17544	974.65	0	27
30	LOAD TIE ROD BOXN	S	C2	3	0	5	0	0	0	2923	584.68	3	5
31	PIN FOR HORIZONTAL LEVER	N	C1	6	6	54	108	0	0	7247	134.2	3	6
32	COUPLER ROD	S	A	3	1200	586	5.9	0	0	291394	497.26	110	1950
33	CONTROL ROD FOR SLACK ADJ	S	B1	3	396	99	3	386	0	127881	1291.73	69	296
34	MAIN PULL ROD FOR BCN	S	C2	4	36	22	7.3	57	0	23666	1075.74	0	11
35	FOOT STEP FOR BOXN WAGON	N	B2	4	780	50	0.8	388	387	11305	226.1	124	768
36	DRAFT GEAR FOR BOXNHL WAG	N	A	7	108	24	2.7	17	64	1146222	47759.25	0	107
37	KNUCKLE PIVOT PIN WITH WA	N	A	5	0	0	0	0	0	0	416.85	0	1196
38	LOCK FOR CBC FOR BOXNHL W	N	A	12	500	63	1.5	607	0	86999	1380.94	65	54
39	COUPLER BODY WITH SHANK W	N	A	3	500	29	0.7	43	132	926330	31942.41	0	0
40	YOKE FOR UPGRADED HIGH TE	N	A	7	200	0	0	77	0	0	9874.91	0	0
41	STRIKER CASTING WEAR PLAT	N	B2	11	3000	195	0.8	0	0	35818	183.68	370	435
42	KNUCKLE FOR CENTRE BUFFER	N	A	4	2400	769	3.8	1359	59	5428221	7058.8	401	2680
43	YOKE FOR HIGH TENSILE CEN	N	A	7	0	0	0	0	0	0	8921.15	0	0
44	LOCK LIFT LEVER ASSLY TOG	N	D	5	0	0	0	0	0	0	439.42	0	0
45	LOCK LIFT LEVER ASSEMBLY	N	A	5	65	335	61.8	0	0	460849	1375.67	7	106
46	MODIFIED STRIKER CASTING	N	B1	7	0	0	0	0	0	0	214.04	0	2321
47	BEARING PIECE	N	B1	12	288	220	9.2	45	0	40304	183.2	214	434
48	SAFETY STRAP PUSH ROD	N	C1	10	60	14	2.8	235	0	947	67.64	4	7

280630(2)/2021/O/o. SDGM/HQ/SECR

	BOX												
49	BRAKE HEAD HANGER TYPE	N	C2	4	0	0	0	0	0	0	611.06	1	1
50	BRAKE SHOE KEY	S	B1	4	10000	1615	1.9	18162	0	75378	46.67	2084	10511
51	PIN WITH WASHER & BULB CO	N	C1	4	12	104	104	0	0	6415	61.68	18	30
52	COMPLETE SET OF EMPTY LOA	N	A	8	36	475	158.3	40	0	1195112	2516.03	19	115
53	BRAKE GEAR PIN NO. 1, DRG	N	C2	3	20	19	11.4	0	0	2047	107.73	2	24
54	PIN NO 14 WITH COTTER HOL	N	B2	9	600	50	1	300	0	6233	124.66	68	527
55	BRAKE GEAR PIN WITH WASHE	N	B1	8	3900	338	1	3900	2000	17200	50.89	877	5354
56	FABRICATED HAND BRAKE WHE	N	A	6	1200	136	1.4	876	0	126462	929.87	67	717
57	PIN NO/9	N	C2	4	60	38	7.6	0	0	3190	83.95	0	22
58	MAINTENANCE KIT "A" OF SA	N	C1	9	6	4	8	0	0	1467	366.72	2	0
59	BRAKE BEAM SUPPORT,	N	D	5	0	0	0	0	0	0	346.82	0	0
60	BLANK	N	D	0	0	0	0	0	0	0	150.77	0	0
61	EMPTY LOAD DEVICE	S	B1	3	48	30	7.5	0	0	132281	4409.36	0	64
62	COMPOSITION L TYPE BRAKE	S	A	3	26000	2728	1.3	20391	0	666898	244.46	2950	33047
63	BRAKE BEAM COMPLETE	S	A	3	84	30	4.3	0	0	166832	5561.08	0	43
64	EQUALISING LEVER WITH BUS	S	C1	3	6	44	88	0	0	55475	1260.8	7	0
65	BOGIE END PULL ROD FOR CA	S	B2	3	108	201	22.3	0	0	190836	949.43	15	0
66	BOGIE BRAKE PUSH ROD FOR	S	C1	3	30	6	2.4	0	0	8347	1391.22	19	30
67	CAST STEEL BRAKE BEAM BOX	S	C2	3	0	1	0	0	0	8511	8510.84	0	1
68	PIN WITH WASHER AND BULB	N	B1	4	0	0	0	0	0	0	130.96	0	0
69	SLACK ADJUSTER COMPLETE T	S	A	4	84	14	2	0	0	190644	13617.45	20	109
70	PRESSURE GAUGE OF AIR/BRA	S	B2	3	800	386	5.8	0	0	202400	524.35	251	819
71	QUICK COUPLING ARRANGEMEN	N	B2	1	220	185	10.1	0	429	173298	936.75	36	507
72	KITS FOR DV COMPRISING 40	N	A	9	36	25	8.3	0	48	67883	2715.32	6	11
73	CUT OFF ANGLE COCK WITH V	S	B1	3	1170	99	1	2266	0	80501	813.14	63	312
74	DISTRIBUTOR VALVE (CI VER	S	A	3	72	73	12.2	0	13	1696648	23241.76	24	52
75	GASKET FOR AIR BRAKE HOSE	S	C1	3	3400	1708	6	4805	0	8524	4.99	186	3301
76	SUPPORT FOR AIR BRAKE HOS	N	A	11	792	39	0.6	882	0	7291	186.95	0	544
77	AIR BRAKE HOSE COUPLING C	N	A	3	720	713	11.9	0	0	703628	986.86	215	454
78	COMMON PIPE BRACKET WITH	S	C1	3	3	3	12	0	0	26148	8716.03	2	1
79	DIRT COLLECTOR ASSEMBLY	S	A	3	13	9	8.3	0	105	11074	1230.46	4	28
80	KIT DISTRIBUTOR VALVE	S	A	3	30	10	4	0	0	28197	2819.75	0	20
81	REP KIT FOR BRAKE CYLNDER	N	B1	4	120	15	1.5	181	0	4227	281.79	5	40
82	PIN FLAT HEAD (TYPE/A) 29	N	C2	4	240	39	2	400	0	1473	37.78	7	214
83	PIN NO/15	N	D	10	0	0	0	0	0	0	72	0	0
84	KNUCKLE PIVOT PIN FOR BOX	N	A	12	2000	416	2.5	0	0	162708	391.12	417	3166
85	DOOR CHAINLESS COTTER SHO	N	C2	2	50	200	48	360	0	23804	119.02	25	125
86	DOOR HINGE PIN	N	B2	4	0	0	0	0	0	0	18	0	0
87	LOCKING BOLT & BRACKET FO	N	B2	2	360	485	16.2	398	0	33976	70.05	53	94

280630(2)/2021/O/o. SDGM/HQ/SECR

88	MODIFIED FLAP DOOR COMPLE	N	A	4	350	166	5.7	126	0	956591	5762.59	175	854
----	------------------------------	---	---	---	-----	-----	-----	-----	---	--------	---------	-----	-----

2.6.4 WARD NO-2013

Sr	Item Description	V/S	ABC	CPMM	AAC	STOCK	STK/MM	DUES/CY	DUES/NY	Stk.Val	BAR	CONSP	LYrISS
1	RUBBER PACKING RING AXLE	N	C1	5	200	40	2.4	0	0	533	13.33	350	1200
2	LOWER SPRING SEAT TO ICF	N	C1	4	0	12	0	0	0	18900	1575	0	4
3	HYTREL LOWER WASHER	N	A	3	560	23	0.5	607	0	24339	1058.23	34	303
4	HYTREL UPPER WASHER MATER	N	B2	6	291	136	5.6	0	0	135599	997.05	139	146
5	HELICAL SPRING FOR CENTER	N	B2	4	3	0	0	6	0	0	6276.01	1	0
6	SUSPENSION STRAP	N	C1	9	20	18	10.8	0	0	2496	138.69	0	115
7	BRAKE BLOCK HANGER (MODIF	N	B2	9	10	4	4.8	0	0	2476	619.05	0	26
8	BLOCK HANGER FOR BOLSTER	S	B1	4	14	18	15.4	0	0	3959	219.95	0	11
9	WEARING PIECE BRONZE (ICF	S	B2	4	30	35	14	0	0	90994	2599.82	7	48
10	VERTICAL SH. OBSERVER	S	A	4	180	19	1.3	61	110	158593	8346.99	75	237
11	SHOCK ABSORVOR 900KGS.	S	C1	4	20	2	1.2	0	0	14834	7416.9	0	6
12	HELICAL SPRING CENTERLESS	N	C1	7	0	0	0	3	0	0	10608	0	1
13	PIN 31MM DIA X 613MM DIA	N	C1	10	4	26	78	0	0	6329	243.43	6	11
14	FLANGE 12 X 140 X 232 MM	N	C1	10	115	72	7.5	150	0	12037	167.18	40	218
15	HELICAL SPRING FOR CENTER	N	C1	7	0	0	0	4	0	0	6341.42	0	2
16	EQUALIZING STAY FOR AC CO	N	B2	6	5	1	2.4	0	0	1728	1727.91	1	19
17	NFTC PACKING RING 22MM	N	C1	11	200	10	0.6	480	0	2509	250.91	15	187
18	SILENT BLOCK FOR ANCHOR L	S	B2	4	70	16	2.7	0	0	7151	446.93	16	81
19	NFTC PACKING RING 13MM	N	C1	6	500	142	3.4	500	0	13248	93.3	123	430
20	NFTC PACKING RING 26MM	N	C1	2	400	14	0.4	180	0	2295	163.95	20	329
21	SIDE BUFFER CASING FOR CO	N	C1	10	6	9	18	0	0	39037	4337.47	2	5
22	K/TYPE COMPISITION BRAKE	S	A	4	10000	2878	3.5	1782	0	710706	246.94	5112	25560
23	K.TYPE BRAKE HEAD.	N	C2	6	0	0	0	0	0	0	846.18	0	8
24	COTTER BULB HEAD 4X12X170	N	C2	10	0	65	0	0	0	246	3.78	0	500
25	COTTER BULB HEAD 4X12X200	N	C1	9	900	1605	21.4	0	0	7318	4.56	400	1495
26	INJECTION MOULDED HIGH PE	N	B1	9	12	1	1	0	0	11462	11461.78	1	17
27	BRAKE BEAM FOR AIR/BRAKE	N	D	8	0	0	0	0	0	0	4613.77	0	0
28	SAFETY WARE ROPE	N	C1	5	26	133	61.4	0	0	26463	198.97	10	82
29	PIN BOLSTER SPRING SUSPEN	N	C1	3	0	0	0	0	0	0	159.45	28	0
30	BRAKE PAD HOLDER .	N	C1	4	0	8	0	0	0	67200	8400	0	0
31	HOSE COUPLING FOR FEED PI	N	A	4	682	731	12.9	0	0	768963	1051.93	33	364
32	CAGE FOR 50 MM VACCUM H P	N	C2	6	0	0	0	0	0	0	3.2	0	0
33	REDAIR OH KIT FOR MAINTAI	N	C2	6	0	0	0	0	0	0	25.34	0	0
34	PASSENGERS EMERGENCY VALV	N	C2	9	2	11	66	0	0	12712	1155.65	4	2
35	EMERGENCY ALARM SINGLE DE	N	C1	8	12	109	109	0	0	69790	640.28	10	36
36	DISTRIBUTOR VALVE	N	A	12	42	14	4	0	0	432307	30879.07	8	48
37	DRAIN VALVE	N	C1	2	24	2	1	20	0	839	419.32	9	102
38	WALL PROTECTOR LAVATORY	N	C2	2	0	12	0	0	0	13370	1114.19	0	0
39	FIXING OF IRS TYPE DOOR	N	C1	5	150	27	2.2	205	0	5942	220.07	29	164
40	SEALED WINDOW GLASS UNIT	N	C2	9	12	181	181	0	0	223141	1232.82	0	117

280630(2)/2021/O/o. SDGM/HQ/SECR

41	LAMINATED SMOKE GLASS	N	C2	7	10	33	39.6	27	0	21783	660.1	0	18
42	SINGLE PIECE LOUVRE SHUTT	N	C1	1	0	0	0	0	0	0	1016.16	3	0
43	LAVATORY DOOR HANDLE	N	C1	1	12	87	87	0	0	13074	150.27	16	0
44	BANJO SHUTTER	N	C1	1	110	169	18.4	0	0	191970	1135.92	0	142
45	INDICATING BOLT	N	C2	1	15	19	15.2	0	0	13371	703.76	0	4
46	STRAP SAFETY FOR COACHES	N	C1	8	12	37	37	0	0	4451	120.29	0	7
47	MIRROR ASSEMBLY	N	C1	2	10	27	32.4	0	0	13438	497.7	2	19
48	CF VALVE OUT LET PIPE	N	C1	12	60	5	1	85	0	999	199.81	0	45
49	MIRROR,406X254X6.3MM/MONO	N	C1	1	72	23	3.8	0	0	1754	76.26	18	145
50	GRAVITY COCK 1/2"	N	C1	1	1200	145	1.5	0	0	5653	38.99	300	1755
51	NYLON MAGZINE BAG RCF/AE	N	C2	1	150	1545	123.6	0	0	86304	55.86	0	1040
52	FOLDING TABLE ARRG	N	C2	2	20	84	50.4	0	0	103062	1226.93	0	64
53	NYLON BOTTLE HOLDER ICF/S	N	C2	4	300	15	0.6	0	0	262	17.49	0	217
54	MIRROR SHELF FOR COACHING	N	C1	1	20	22	13.2	0	0	1463	66.49	8	10
55	COMMODE LID SEAT PLASTIC	N	C1	1	140	151	12.9	150	0	26564	175.92	4	165
56	MODIFIED H.D.P.E. LAVOTOR	N	C2	12	0	192	0	0	0	246559	1284.16	0	46
57	SPRING LOADED LEVER TYPE	N	B2	1	420	135	3.9	310	0	120175	890.19	41	524
58	FRAME MIRROR 444X292X410X	N	C2	1	36	3	1	36	0	390	129.91	3	45
59	BRAKE PAD HOLDER.	N	C1	2	4	6	18	0	0	50400	8400	0	2
60	PROFECTIVE TUBE COMPETE	N	B2	6	180	158	10.5	0	0	78882	499.25	59	175
61	HANGER FOR BOGIE BOLSTER	N	B1	2	0	22	0	0	0	18032	819.62	50	12
62	140 KN AIR SPRING FOR LHB	N	D	8	2	0	0	9	0	0	460251.3	0	0
63	BRAKE CYLINDER WITH SLACK	N	B1	9	48	4	1	0	0	37232	9307.88	20	65
64	CUT OFF ANGLE COCK	N	C1	8	100	1	0.1	110	68	466	466.43	0	20
65	HOSE CONNECTION FOR 15 MM	N	C1	1	600	304	6.1	0	0	49715	163.54	259	822
66	KEY FOR BRAKE SHOE	N	C2	8	300	900	36	0	0	27668	30.74	0	300
67	BALL JOINT TRACTION LEVER	N	B2	1	18	21	14	0	0	63448	3021.34	0	6
68	TRACTION CENTER ELASTIC J	N	C1	1	6	11	22	0	0	63800	5800	0	6
69	LATERAL BUMP STOP.	N	D	1	25	0	0	12	0	0	3438	0	0
70	AXLE BOX PIVOT BUSH.	N	B2	1	25	8	3.8	0	0	84000	10500	0	12
71	CENTERING DISC.	N	C1	1	6	26	52	0	0	52225	2008.65	0	6
72	CONTROL ARM TOP TO FIAT D	S	B2	3	3	7	28	0	0	107410	15344.32	0	3
73	TRACTION LEVER.	N	D	4	4	0	0	4	0	0	13518.75	0	0
74	CENTERING DISC FOR PRIMAR	N	C1	2	10	28	33.6	0	0	44100	1575	0	7
75	ANTI ROLL BAR FORK.	N	C1	4	5	3	7.2	0	0	35280	11760	0	2
76	CENTERING DISC.	N	C1	2	6	11	22	0	0	76230	6930	0	4
77	SAFETY WIRE ROPE ASSEMBLY	N	C2	8	10	131	157.2	0	0	47042	359.1	0	139
78	AXLE END COVER	N	C2	3	12	36	36	0	0	28274	785.4	0	31
79	PRIMARY SPRING FOR GENERA	N	C1	3	3	1	4	0	0	4124	4124.18	1	0
80	PRIMARY SPRING FOR GENERA	S	C2	3	0	0	0	0	0	0	9197.25	0	1
81	SECONDERY SPRING GENARETO	N	C2	3	0	1	0	0	0	17684	17683.51	0	1
82	SECONDARY SPRING OUTER FO	N	D	4	6	0	0	6	0	0	43431	0	0
83	SECONDARY SPRING INNER FO	N	C2	4	3	1	4	9	0	14101	14101	0	1
84	SECONDARY SPRING (OUTER)	N	B2	4	6	5	10	0	0	216712	43342.32	1	4
85	PRIMARY BUMP STOP FOR FLA	N	C1	4	15	35	28	0	0	13083	373.8	5	10
86	SLEEVE	N	D	8	170	167	11.8	0	0	32732	196	3	0
87	SECONDARY LATERAL DAMPER.	N	B2	4	12	6	6	0	0	39889	6648.22	0	31
88	ROLL LINK TO DRG. NO. 126	N	D	4	10	0	0	10	0	0	3777	0	0

280630(2)/2021/O/o. SDGM/HQ/SECR

89	TRACTION LEVER	N	D	4	4	0	0	4	0	0	7691.4	0	0
90	PRIMARY SPRING FOR LHB NA	N	D	5	12	0	0	12	0	0	4002	0	0
91	PRIMARY SPRING FOR LHB NA	N	C1	5	6	6	12	0	0	62269	10378.12	4	2
92	SECONDARY SPRING FOR LHB	N	C1	5	12	1	1	13	0	16514	16514.1	0	6
93	SECONDARY SPRING FOR LHB	N	B2	5	12	0	0	12	0	0	37914	0	0
94	FLEX BALL.	N	D	5	3	2	8	0	0	521560	260780	1	0
95	DISTRIBUTOR VALVE FOR LHB	N	B1	3	6	8	16	0	0	439227	54903.33	2	9
96	PRIMARY VERTICAL DAMPER	N	B1	5	12	3	3	0	0	17681	5893.77	3	61
97	CHECK VALVE,RV7/T.	N	C1	5	6	8	16	0	0	94400	11800	0	4
98	PRESSURE SWITCH	N	C2	5	3	0	0	3	0	0	10280	0	1
99	SET OF BRAKE CYLINDER	N	A	8	0	0	0	0	0	0	678466.9	0	2
100	HOSE CONNECTIONS.	N	D	6	100	50	6	0	0	154108	3082.16	0	0
101	HOSE COUPLING BP FOR LBH	V	D	3	45	0	0	0	0	0	1111.63	0	0
102	COCK AHB 200 NW19.	N	C1	6	4	5	15	0	0	88500	17700	0	3
103	SECONDARY SPRING FOR LHB	N	C2	3	3	14	56	0	0	159390	11384.98	1	1
104	YAW DAMPER FOR FLAT IR BO	N	B2	3	3	2	8	0	0	38262	19131.19	0	2
105	PAD FOR SECONDARY SUSPENS	N	B2	6	30	13	5.2	0	0	207753	15981	5	22
106	PRIMARY SPRING (OUTER) FO	N	C1	6	6	8	16	0	0	84828	10603.5	1	3
107	PRIMARY SPRING (INNER) FO	N	D	6	6	0	0	6	0	0	3653	0	0
108	SECONDARY SPRING (OUTER)	N	D	6	6	0	0	6	0	0	31050	0	0
109	PAT HOLDER RIGHT.	N	C1	6	6	26	52	0	0	204750	7875	0	5
110	PAD HOLDER LEFT.	N	C1	7	6	26	52	0	0	204750	7875	0	5
111	SPEED SENSOR TO FTRTIL PA	N	B1	3	3	11	44	0	0	611190	55562.75	2	1
112	RUBBER PAD FOR LONGITUDIN	V	D	3	40	8	2.4	12	0	2780	347.55	0	0
113	RUBBER PAD	N	C1	8	12	47	47	0	0	35532	756	6	7
114	SINGLE BRAKE INDICATOR.	N	C2	7	3	3	12	0	0	19215	6405	0	3
115	EMERGENCY BRAKE CABEL BOX	N	C1	7	5	4	9.6	0	0	26880	6720	1	5
116	BRAKE ACCELERATOR.	N	C1	7	3	3	12	0	0	113999	37999.5	0	3
117	COUPLER LOCK FOR COACHING	N	D	7	6	0	0	6	0	0	4122.44	0	0
118	HOSE COUPLING FP FOR LHB	V	D	3	45	0	0	0	0	0	1111.63	0	0
119	ANTI ROLL BAR TO ALSTOM D	N	C1	4	1	4	48	0	0	58093	14523.16	0	2
120	MIRROR AT OUTSIDE WASH B	N	C1	1	12	8	8	0	0	2184	273	0	2
121	MIRROR FOR LAVATORY OF LH	N	C1	1	0	28	0	0	0	20580	735	0	18
122	SET OF SIDE BUFFER ASSLY.	N	B2	7	2	2	12	0	0	310890	155444.8	0	2
123	COMPRESSING SPRING OF SUP	V	D	3	36	26	8.7	0	0	38626	1485.61	10	0
124	FOOT STEP COMPLETE	V	D	3	15	0	0	0	0	0	1445.23	0	0
125	HIGH TENSILE AAR 'H' TYPE	N	D	7	3	0	0	3	0	0	264899	0	0
126	FOOT STEP COMPLETE	V	C2	3	12	12	12	0	0	26460	2205	1	2
127	COMPRESSING SPRING OF SUP	V	D	3	45	0	0	0	0	0	1221.07	0	0
128	KNUCKLE FOR CBC.	V	D	1	0	0	0	0	0	0	23794.14	0	0
129	KNUCKLE PIVOT PIN	V	D	2	0	0	0	0	0	0	2164.9	0	0
130	KNUCKLE FOR CBC	N	C1	6	6	2	4	0	0	52144	26072.16	0	3
131	KNUCKLE FOR CBC	N	D	6	6	0	0	0	0	0	26072.16	0	0
132	KNUCKLE PIVOT PIN	V	C2	3	12	12	12	0	0	25148	2095.67	0	6
133	GLASS UNIT FOR EMERGENCY	N	C1	3	8	131	196.5	0	0	240631	1836.87	0	10
134	DOUBLE SEALED WINDOW GLAS	N	C1	5	3	9	36	0	0	14175	1575	0	3
135	FIXED WINDOW GLASS.	N	C1	9	10	51	61.2	0	0	115133	2257.5	0	9
136	MIRROR LH AND RH	V	D	3	0	0	0	0	0	0	975	0	0

280630(2)/2021/O/o. SDGM/HQ/SECR

137	GLASS UNIT FOR DOOR WINDO	V	D	2	0	0	0	0	0	0	2098	0	0
138	FIXED GLASS UNIT FOR HOPP	V	D	3	35	33	11.3	0	0	32710	991.2	2	0
139	FIXED WINDOW FOR LHB AC C	V	D	3	15	0	0	0	0	0	4819.12	0	0
140	MIRROR LH AND RH	V	D	1	0	0	0	0	0	0	975	0	0
141	FIXED WINDOW FOR LHB AC C	N	D	11	15	0	0	8	0	0	4819.12	0	0
142	FIXED WINDOW FOR LHB AC C	V	D	3	30	0	0	0	0	0	4819.12	0	0
143	CONTROL ARM LOWER LEFT	V	C2	3	4	2	6	0	0	16576	8288	1	1
144	NYLON ROLLER	N	C1	9	120	333	33.3	0	0	8741	26.25	0	67
145	INDICATOR.	N	C1	12	4	2	6	0	0	16520	8260	1	5
146	GLASS UNIT FOR DOOR WINDO	V	C2	3	12	13	13	0	0	29120	2240	0	2
147	FIXED GLASS UNIT FOR HOPP	V	D	3	35	0	0	0	0	0	816.85	0	0
148	COCK DH /7TE	V	D	3	4	3	9	0	0	40710	13570	1	0
149	FOLDABLE SAFETY RAIL	N	C1	10	9	11	14.7	0	0	8073	733.95	3	4
150	SECONDARY VERTICAL DAMPER	N	B1	3	4	9	27	0	0	57161	6351.27	2	11
151	N2 BOARD.	N	D	3	3	0	0	3	0	0	175496	0	0
152	STAINLESS STEEL WASH BASI	N	C1	10	0	5	0	0	0	37538	7507.5	0	3
153	SNACK TABLE WITH BOTTLE H	N	C1	1	0	41	0	0	0	101719	2480.96	3	38
154	COCK G1/DN15E.	N	C1	8	4	13	39	0	0	168740	12980	0	7
155	FLEXBALL/REMOTE CONTROL	N	B2	8	3	1	4	0	0	112100	112100	0	5
156	CPU BOARD.	N	D	9	3	2	8	0	0	244021	122010.7	1	0
157	N1 BOARD.	N	D	12	3	3	12	0	0	354315	118105	0	0
158	PRESSURE GAUGE 80 X 10MM	V	D	3	3	2	8	0	0	21847	10923.34	1	0
159	DOUBLE BRAKE INDICATOR.	N	C1	12	6	10	20	0	0	106628	10662.75	0	2
160	STAINLESS STEEL DUSTBIN	N	C2	11	5	7	16.8	0	0	38808	5544	0	5
161	HOSE ASSEMBLY 1/2"	V	D	3	18	18	12	0	0	24723	1373.5	0	0
162	HOSE COUPLING FP FOR LHB	V	D	3	20	0	0	20	0	0	1111.63	0	0
163	HOSE COUPLING BP FOR LBH	V	D	3	20	0	0	20	0	0	1111.63	0	0
164	HOSE ASSEMBLY 1/2" X 600	V	D	3	18	0	0	0	0	0	854.43	0	0
165	CIRCUIT BOARD EB01B.	N	B2	12	4	3	9	0	0	247800	82600	0	5
166	ST BOARD.	N	D	12	3	3	12	0	0	130824	43608	0	0
167	CIRCUIT BOARD PB03A.	N	B2	12	4	3	9	0	0	336300	112100	0	5
168	BRAKE CALIPER UNIT LEAVER	V	D	3	1	0	0	0	0	0	62908.65	0	0
169	BRAKE PAD LH AND RH FOR L	N	A	3	500	571	13.7	0	0	1159059	2029.88	0	285
170	MANUAL UNCOUPLING DEVICE	N	C1	3	3	17	68	0	0	216117	12712.75	0	2
171	GE BOARD.	N	C1	11	3	1	4	0	0	71267	71267.28	0	2
172	CONNECTOR.	N	B2	3	6	6	12	0	0	424800	70800	1	5
173	CIRCUIT BOARD MB04B	N	B1	4	3	3	12	0	0	477900	159300	0	5
174	MV BOARD.	N	D	8	3	0	0	3	0	0	71831	0	0
175	DUMP VALVE TO FTRTIL PART	N	B2	3	3	1	4	3	0	64251	64251	0	6
176	RE BOARD.	V	D	3	3	0	0	3	0	0	59551	0	0
177	PULL BOX ASSY.	V	C1	3	8	5	7.5	0	0	33600	6720	1	2
178	FLEXBALL/REMOTE CONTROL.	V	C1	3	3	2	8	0	0	165200	82600	0	4
179	FLEXBALL/REMOTE CONTROL.	V	B2	3	3	1	4	0	0	106200	106200	0	5
180	CUT/OUT COCK/ BC1 & BC2.	V	D	3	0	5	0	0	0	102480	20496	1	0
181	BATTERY 12 V 13 PLATES 88	N	C1	8	30	1	0.4	30	0	5166	5165.68	0	10
182	BATTERY 12V 25 PLATED	N	B2	12	58	13	2.7	0	0	127185	9783.44	8	58
183	ELECTRODES/ CLASS A/1	N	C1	2	20000	3969	2.4	27354	0	23332	5.88	1764	14616
184	ELECTRODES B/8	N	A	4	60000	8073	1.6	10400	0	72000	8.92	20763	61928

280630(2)/2021/O/o. SDGM/HQ/SECR

185	ELECTRODES CL B1 6 SWG	N	B2	2	4000	3024	9.1	3716	0	40638	13.44	1975	4526
186	FRAME GOGGLES FOR EYE PRO	N	C2	8	60	153	30.6	0	0	8307	54.3	6	74
187	REGULATOR ACETYLENE	N	C1	1	15	10	8	0	0	11661	1166.1	4	8
188	TWO STAGE OXYGEN REGULATO	N	C1	2	30	46	18.4	0	0	50058	1088.22	6	125
189	NOZZLE TYPE A1/16INCH	N	C1	1	156	43	3.3	0	0	4078	94.84	67	187
190	NOZZEL TYPE A 3/64	N	C2	3	20	259	155.4	0	0	22544	87.04	2	27
191	HOLDER ELECTRODES 600 AMP	N	C1	12	300	49	2	0	0	15328	312.82	90	293
192	WELDING SCREEN	N	C2	7	0	1	0	0	0	102	101.64	0	59
193	CLOCK OFFICE 12 DIAL	N	C1	8	0	0	0	0	0	/2	212.35	0	109
194	TUMBLER GLASS FOR A. C.	N	C1	1	6000	21	0	0	0	350	16.67	1678	6037

2.6.5 WARD NO-2014

Sr	Item Description	V/S	ABC	CPMM	AAC	STOCK	STK/MM	DUES/CY	DUES/NY	Stk.Val	BAR	CONSP	LYrISS
1	ELBOW MS GALVD NOMINAL SI	N	C2	7	0	6	0	0	0	150	24.95	4	40
2	I.G. ELBOW 50MM	N	D	7	0	5	0	0	0	418	83.51	50	0
3	I.G. ELBOW 2.1/2"	N	C2	7	0	21	0	0	0	2955	140.73	0	4
4	IG REDUCING ELBOW 20?15 M	N	C2	7	0	30	0	0	0	601	20.05	100	125
5	IG 'R' ELBOW 25?20 MM	N	C2	7	0	4	0	0	0	110	27.42	0	27
6	ELBOW MS GALVD NOMINALSIZ	N	C1	5	1500	405	3.2	0	0	4552	11.24	1050	2080
7	SOCKET I.G. 50 MM	N	C2	7	0	16	0	0	0	959	59.97	50	70
8	IG REDUCING SOCKET 25?20	N	C2	7	0	75	0	0	0	1580	21.07	100	190
9	SOCKET GALV BORE DIA 15MM	N	C2	7	1200	225	2.3	0	0	2358	10.48	800	1653
10	SOCKT GAL RONBORE DIA PIP	N	C2	7	0	110	0	0	0	2226	20.24	220	643
11	SOCKT GAL RONBORE DIA PIP	N	C2	7	0	65	0	0	0	2467	37.95	50	30
12	TEE MS FOR PIPE BORE 15?1	N	C2	7	0	2	0	0	0	41	20.5	100	393
13	TEE MS FOR PIPE BORE 25?2	N	C2	7	0	17	0	0	0	597	35.1	120	55
14	TEE I.G 50 MM	N	C2	7	0	98	0	0	0	10779	109.99	0	109
15	IG 'R' TEE 25?25?15 MM	N	C2	7	0	111	0	0	0	3800	34.24	70	291
16	IG 'R' TEE 25?25?20MM	N	C2	7	0	235	0	0	0	8640	36.77	20	93
17	GUNMETEL WHEELVALVE GLOBE	N	C1	1	100	98	11.8	0	0	23071	235.42	55	244
18	GUNMETEL WHEELVALVE GLOBE	N	C1	2	50	127	30.5	0	0	67404	530.74	20	133
19	GUNMETEL WHEELVALVE GLOBE	N	C2	2	0	31	0	0	0	120360	3882.58	0	2
20	CI SLUICE VOLVE 0"	N	C2	12	0	8	0	0	0	21045	2630.62	5	1
21	CI SLUICE VOLVE 3"	N	C1	12	0	6	0	0	0	17136	2855.92	4	23
22	CI SLUICE VOLVE 4"	N	C1	12	0	7	0	0	0	36758	5251.2	0	10
23	TUBE MS GALVD 15 MM	N	C1	9	1000	90	1.1	0	0	7340	81.56	588	2304
24	TUBE MS GALVD 20 MM	N	C1	2	400	60.2	1.8	0	0	7509	124.74	362	313.38
25	TUBE MS GALVD 25 MM	N	C1	9	1000	126	1.5	0	0	19908	158	192	1092
26	GI PIPE 40 MM	N	C1	9	450	714	19	0	0	149156	208.9	0	492
27	TIRFUR 3 TON	N	C1	7	0	3	0	0	0	40500	13499.97	0	3
28	GEARLESS HAND OPERATED PU	N	C1	7	0	0	0	7	0	0	9974.97	0	3
29	STEEL WIRE ROPE 12 MM	N	C2	8	0	50	0	0	0	3913	78.25	0	50
30	SHORT LINK SAFETY CHAIN 1	V	C1	2	0	16	0	0	0	37215	2325.93	0	2
31	LEVEL CROSSING GATE SAFET	N	C1	1	20	54	32.4	0	0	109195	2022.13	0	35
32	BUCKET I.G	N	C1	3	50	98	23.5	0	0	34468	351.71	2	88
33	PAN MORTAR 16 INCH DIA	N	C2	8	150	2	0.2	0	0	529	264.32	0	41

280630(2)/2021/O/o. SDGM/HQ/SECR

34	LAMP GATE LEVEL CROSSING	N	C2	8	0	43	0	0	0	76110	1770	0	10
35	HAND SIGNAL LAMP KOIL SK	V	C2	2	0	140	0	0	0	82553	589.67	1	12
36	BURNER FOR H.S. LAMP	N	C2	5	0	50	0	0	0	2134	42.67	0	9
37	WICK COTTON FLAT 6.35 MM	N	C2	8	0	430	0	0	0	2849	6.63	0	331
38	DOOR CLOSURE	N	C1	1	250	24	1.2	0	0	7773	323.88	100	266
39	PAD LOCK 40 MM	V	C2	2	120	378	37.8	0	0	39616	104.8	10	121
40	LOCK PAD 50 MM GALVD	V	C1	2	400	638	19.1	0	0	66592	104.38	0	489
41	LOCKPAD I.C.4LEVER.65MM.	V	C1	2	500	499	12	0	0	58705	117.65	16	899
42	LOCK PAD 75 MM GALVD	V	C1	2	300	1003	40.1	0	0	188831	188.27	32	531
43	HINGES 100 MM	N	C2	3	500	200	4.8	0	0	2402	12.01	300	620
44	ENDLESS 'V' BELT C/122	N	C1	12	360	231	7.7	285	0	709820	3072.81	58	90
45	THERMOPLASTIC WATER HOSE.	N	C2	1	5	3	7.2	0	0	1273	424.32	0	8
46	HOSE WATER RUBBER 1 1/4 4	N	C1	12	0	0	0	0	0	0	970.68	0	0
47	TARPAULINS CANVAS 15X15	N	C1	7	40	2	0.6	0	0	5632	2816.1	0	82
48	TARPAULINS 30X15	N	B2	3	25	1	0.5	0	0	6047	6047.15	21	124
49	LEATHER VEGETABLE TANNED3	N	C1	7	50	105	25.2	0	0	26680	254.1	100	155
50	LEATHER GAUNTLETS 400MM	N	A	5	4500	1299	3.5	2500	0	139437	107.34	1470	6519
51	SHEET RUBBER MEDIUM HARD	N	C2	12	50	311	74.6	0	0	23672	76.12	0	128.8
52	CLOTH LEATHER GREEN	N	B2	1	150	7	0.6	0	0	952	135.94	153	450
53	LAMINATED PLASTIC SHEET	N	C1	3	25	0	0	54	0	0	1404.2	6	36
54	MAT DOOR COIR 22X36	N	B2	3	600	9	0.2	0	0	4869	541.02	36	263
55	ROPE MANILA	N	C1	1	400	355	10.7	0	0	169313	476.94	235	857.3
56	BITUMEN FOR WATER PROOFIS	N	C1	8	0	2100	0	0	0	123319	58.72	125	1600
57	PVC CONNECTION	N	C1	7	36	79	26.3	0	0	3636	46.02	20	26
58	HAND SANITIZER	N	N	4	4800	70	0.2	4000	0	9415	134.49	4730	0
59	PPE	N	N	6	0	0	0	0	0	0	1087	0	0
60	SURGICAL FACE MASK	N	N	4	5000	0	0	0	0	44	9.43	21000	0
61	N/95 MASK FOR PROTECTION	N	N	4	2500	0	0	2500	0	0	49.68	625	0
62	COLLAPSIBLE (FOLDING)CANV	N	C1	1	20	9	5.4	0	0	17515	1946.17	15	140
63	CLOTH COTTON LONG BLEACHE	N	A	5	500	455	10.9	0	0	43453	95.5	220	375
64	CLOTH COTTON JAGANNATHI K	N	C2	4	1000	8	0.1	500	0	264	33.03	1749	282
65	SPONGE CLOTH	N	C1	5	3000	363	1.5	0	0	4178	11.51	212	2547
66	ECO FRIENDLY DISPOSABLE N	N	C1	4	0	24000	0	0	0	44589	1.86	0	225437
67	INDUSTRIAL SAFETY FOOT WE	N	A	7	250	3	0.1	1645	0	1301	433.59	0	1156
68	BOOTS LEATHER GUM	N	C1	7	200	88	5.3	0	0	35978	408.84	0	423
69	CAP WAT PROOF	N	C1	4	0	20	0	0	0	5318	265.91	400	263
70	COAT WATER PROOF	N	C1	4	0	574	0	0	0	156310	272.32	105	294
71	BLANKETS WOOLLEN RED	N	C1	4	120	10	1	0	0	3992	399.15	192	118
72	SOFT BLANKET OF SUPERIOR	N	B1	1	2500	618	3	0	0	259049	419.17	100	2959
73	PILLOW COVER HANDLOOM BLE	N	C1	1	0	0	0	0	0	0	33.65	0	0
74	FACE TOWEL TURKISH 60X40	N	C1	1	0	13302	0	0	0	575731	43.28	3512	4622
75	WASHABLE PILLOW 45X30X10	N	C1	1	0	30	0	0	0	2514	83.79	300	0
76	CURTAIN CLOTH	N	C1	4	1000	1.75	0	0	0	173	98.62	0	930.25
77	MOSQUITO NET	N	C1	12	200	71	4.3	0	0	31723	446.81	240	190
78	DUSTER ORDINARY 61X61 CMS	N	A	5	32000	485	0.2	17400	0	32136	66.26	5893	34816
79	POLYSTERSTAPLE FIBRE PILL	N	C1	1	1000	1010	12.1	650	0	113165	112.04	70	237
80	PILLOW COVER MILL MADE SU	N	C2	1	15000	3412	2.7	8750	10000	175243	51.36	945	3659
81	PILLOW COVER HANDLOOM BLE	N	B1	1	0	0	0	0	0	0	33.65	0	1

280630(2)/2021/O/o. SDGM/HQ/SECR

82	PILLOW COVER POLYVASTRA 6	N	C1	1	200	745	44.7	0	0	94863	127.33	0	204
83	HANDLOOM COTTON BED SHEET	N	A	1	44018	11251	3.1	0	0	1740284	154.68	5771	19703
84	BED SHEET POLY VASTRA 229	N	B2	1	170	29	2	0	0	11850	408.63	0	255
85	BED SHEET WHITE SUPERIOR	N	A	1	0	0	0	0	0	0	229.95	0	27946
86	TOWEL HONY COMB LARGE	N	C1	5	2000	603	3.6	0	0	49394	81.91	552	1346
87	HAND TOWEL HANDLOOM TURKI	N	B1	1	18000	1352	0.9	0	0	60405	44.68	175	16080
88	TOWELS TURKISH	N	C1	5	500	426	10.2	0	0	95643	224.51	1851	346
89	HONEY COMB TOWEL COTTON K	N	C1	2	1500	1017	8.1	0	0	123734	121.67	559	1484
90	COTTON WASTE WHITE TEASED	N	C1	1	3000	559	2.2	2000	0	22608	40.44	1075	4016
91	COTTON WASTE WHITE UNTEAS	N	C1	8	1000	20	0.2	1387	0	918	45.92	30	1475
92	ZIP FASTENERS OF DIFFEREN	N	D	7	0	0	0	0	0	/138	10.37	0	0
93	FLAG BANNER RED	N	C1	5	2500	4501	21.6	0	0	477985	106.2	254	2520
94	FLAG GREEN	N	B2	5	7500	305	0.5	11700	0	13594	44.57	295	8129
95	FLAG RED	N	B2	5	7500	10071	16.1	5000	0	461787	45.85	895	9632
96	FIRE RETARDANT CURTAIN FA	N	C1	4	600	395.6	7.9	0	0	83076	210	0	531.6
97	UMBRELLA SURVEY 213.4CM.D	N	C1	8	20	39	23.4	0	0	218182	5594.41	2	72
98	YARN SPUN DRESSED 7 PLY	N	C2	12	150	16	1.3	0	0	1009	63.08	0	134
99	WIRE STEEL MILD 1.60	N	A	4	25	0.307	0.1	2	0	21011	68438.7	0	7.52
100	LEAD WOOL YARN	N	C1	5	1200	975	9.8	2000	0	235738	241.78	0	1790
101	PLYWOOD 2.44MX1.22MX3MM T	N	C1	3	0	0	0	0	0	0	787.5	0	25
102	MEDIUM DENSITY FIBRE BOAR	N	C1	5	20	4	2.4	80	0	5562	1390.5	108	27
103	MEDIUM DENSITY FIBRE BOAR	N	C1	5	50	156	37.4	0	0	155047	993.89	10	69
104	COMPREG PLY WOOD 12MM	N	B2	4	127	26	2.5	0	0	71499	2749.95	21	126
105	WOODEN WEDGE (BIJA WOOD),	N	C1	5	1500	962	7.7	0	0	52816	54.9	100	1928

2.6.6

WARD NO-2015

Sr	Item Description	V/S	ABC	CPMM	AAC	STOCK	STK/MM	DUES/CY	DUES/NY	Stk.Val	BAR	CONSP	LYrISS
1	SUBMERSIBLE COPPER FLAT 4	N	C1	11	721	300	5	0	0	20925	69.75	600	300
2	SUBMERSIBLE COPPER CABLE	N	C1	4	480	607	15.2	0	0	95712	157.68	500	200
3	CABLE FLEXIBLE 2 CORE	N	C1	4	15000	720	0.6	10000	23467	3714	5.16	3920	14530
4	CABLE CABTYRE 3 CORE	N	C1	4	5000	60	0.1	5400	0	1113	18.56	136	4314
5	PVC CABLE 1.5 SQ. MM	N	C1	11	24000	14106	7.1	0	0	56611	4.01	7154	24315
6	PVC CABLE 6 SQ. MM	N	C1	4	28000	100	0	28000	0	839	8.39	1900	200
7	CABLE PVC 4 SQ.MM	N	C1	4	15000	900	0.7	20300	0	31742	35.27	9400	19900
8	SUBMERSIBLE CABLE FLAT 2.	N	C1	11	720	200	3.3	0	0	7096	35.48	375	725
9	CABLE PVC S.CORE 650/1100	N	C2	6	400	100	3	0	0	2465	24.65	0	800
10	PVC CABLE 2.5 SQ. MM	N	C1	11	30000	8700	3.5	0	0	28924	3.32	14800	65973
11	CABLE PVC 25 SQ.MM	N	C1	6	1700	700	4.9	0	0	23542	33.63	800	1500
12	WELDING CABLE 95SQMM	N	B2	4	1600	30	0.2	2400	0	6829	227.63	70	2000
13	BINDING WIRE 16 SWG	N	C1	7	120	180.07	18	192	0	139385	774.06	47	29.85
14	TINNED FUSE WIRE 30A	N	C1	7	80	132.05	19.8	0	0	91193	690.6	55	34.5
15	COTTON TAPE 0.20MM THICK	N	C2	7	300	6450	258	0	0	7210	1.12	1000	1100
16	TAPE COTTON 19 MM X 0.25	N	C2	7	200	132	7.9	0	0	647	4.9	0	594
17	FRLT TAPE 25 MM	N	C1	7	8000	19560	29.3	0	0	313431	16.02	3150	14920
18	PVC TAPE 20 MM	N	C1	9	25000	70	0	21697	0	188	2.69	8260	35241
19	TAPE BLACK ADHESIVE 20X4M	N	C1	4	10000	23700	28.4	0	0	283921	11.98	1880	10680

280630(2)/2021/O/o. SDGM/HQ/SECR

20	F.T. SWITCH 6 AMPS.	N	C1	4	10000	325	0.4	0	0	2646	8.14	1662	12073
21	TOGGLE SWITCH 250V	N	C2	11	0	1015	0	0	0	85414	84.15	0	10
22	63 AMPS MCCB ,TP 415 VOLT	N	C2	5	36	76	25.3	0	0	84106	1106.65	1	14
23	400 AMPS MCCB ,3 POLE 415	N	C2	3	6	1	2	6	0	8024	8024	0	1
24	100 AMPS MCCB ,TP 415 VOL	N	C1	5	30	56	22.4	0	0	90412	1614.5	0	25
25	200 AMPS MCCB ,TP 415 VOL	N	C1	10	20	19	11.4	0	0	60899	3205.2	4	43
26	ICTP MAIN SWITCH 100A	N	C1	1	50	28	6.7	75	0	71128	2540.3	15	62
27	BI/PIN LAMP HOLDER	N	C2	7	0	0	0	0	0	0	6.77	1	99
28	FUSE PORCELAIN 240V 15AMP	N	C2	10	45	253	67.5	0	0	5132	20.29	0	41
29	FUSE PORCELAIN 500V 30 AM	N	C2	10	40	76	22.8	0	0	3914	51.5	20	8
30	HRC FUSE LINKS CARTRIDGE	N	C2	9	100	34	4.1	0	0	5695	167.49	0	84
31	HRC FUSE DIN TYPE 16 AMPS	N	C2	3	100	255	30.6	0	0	40885	160.33	0	70
32	HRC FUSE LINKS CARTRIDGE	N	C2	9	150	97	7.8	0	0	3401	35.06	0	150
33	HRC FUSE LINK CARR 315 AM	N	C1	9	0	5	0	0	0	2569	513.82	0	50
34	KANTARK FUSE 60 A	N	C1	10	300	115	4.6	150	0	15859	137.91	38	441
35	K/TYPE FUSE 100A	N	C1	3	300	137	5.5	0	0	29012	211.77	40	315
36	LED STREET LIGHT COMPLETE	N	C1	1	150	52	4.2	100	0	28674	551.43	83	217
37	BALLAST FOR METAL HALIDE	N	C1	10	0	50	0	0	0	37000	740	0	50
38	BALLAST FOR METAL HALIDE	N	C1	10	0	116	0	0	0	61947	534.02	0	94
39	LAMP FLUORESCENT STARTER	N	C2	10	0	1339	0	0	0	4861	3.63	0	976
40	LED LAMP 7 WATT	N	C1	1	750	826	13.2	0	0	60912	73.74	27	531
41	LED LAMP 9 WATT	N	C1	1	750	30	0.5	750	0	1370	45.66	58	551
42	CFL LAMP 4 PIN 11 WATT 11	N	C1	5	0	0	0	0	0	0	61.71	0	114
43	TORCH LIGHT 3 CELL	N	C1	11	0	0	0	0	0	0	269.27	0	104
44	BATTERY OPE.TORCH CUM H.S	N	A	3	1800	1415	9.4	0	0	3422828	2418.96	190	1685
45	CHOKE 20 WATTS.	N	C1	10	0	956	0	0	0	71723	75.02	0	290
46	LED BASED INSPECTION MINO	N	B2	3	1400	3	0	700	0	4458	1485.86	0	247
47	CFL ELECTRONIC BALLAST 11	N	C1	5	0	104	0	0	0	16219	155.95	0	116
48	CFL LAMP 4 PIN, 5 WATT, 1	N	C2	5	0	302	0	0	0	20913	69.25	0	8
49	ELECTRONIC BALLAST FOR 5	N	C1	5	0	52	0	0	0	9105	175.1	0	25
50	CEILING FAN 1200 MM	N	A	3	1500	24	0.2	800	0	20412	850.52	367	3013
51	CEILING FAN 1400 MM COMP.	N	B1	11	1500	40	0.3	0	0	3223	80.57	65	1489
52	H.S.METER 5A	N	C1	3	300	124	5	0	0	61506	496.02	2	203
53	ELECTRONIC ENERGY METER	N	C1	11	180	214	14.3	0	0	92637	432.88	62	129
54	LED FLOOD LIGHT COMPLETE	N	B2	3	100	2	0.2	0	0	4203	2101.31	2	149
55	LED TUBE LIGHT COMPLETE F	N	B2	1	1500	11	0.1	0	0	1607	146.1	755	1708
56	LED LAMP 12 WATT,	N	C1	1	720	294	4.9	0	0	23896	81.28	168	805
57	LED FLOOD LIGHT COMPLETE	N	C1	3	100	25	3	0	0	31343	1253.71	73	132
58	LED STREET LIGHT COMPLETE	N	B2	3	250	10	0.5	0	0	4231	423.06	193	308
59	LED FLOOD LIGHT COMPLETE	N	B2	3	0	0	0	0	0	0	852.89	0	101
60	LED TYPE EMERGENCY LIGHT	N	B2	1	90	8	1.1	193	0	35287	4410.9	14	56
61	4.5KW ALTERNATOR 110V.	N	C1	4	6	11	22	0	0	1113823	101256.6	0	1
62	BELT TENSIONING MECHANISM	N	C1	3	48	52	13	0	0	331495	6374.91	0	63
63	PORCELAIN BRACKET INSULA	N	B2	3	200	30	1.8	0	437	99124	3304.14	0	403
64	ELECTRONIC RECTIFIER CUM	S	A	2	20	19	11.4	0	0	1987591	104610	0	12
65	HRC FUSE 10AMPS 415 V AC	N	C2	5	20	53	31.8	0	0	3454	65.17	0	72
66	WIRE COPPER CADMIUM CATEN	N	B1	1	3000	198.8	0.8	0	0	131331	660.62	0	2051
67	STRN.ANNE.COPPER JUMPER W	N	C1	4	700	59.2	1	0	0	40516	684.4	0	643.8

280630(2)/2021/O/o. SDGM/HQ/SECR

68	STRN.ANNE.COPPER JUMPER W	N	C2	4	300	95	3.8	0	0	67092	706.23	0	10
69	SOLID STATE ELECTRONIC RE	N	C1	3	0	302	0	0	0	41161	136.3	0	168
70	BATTERY OPERATED LEDBASED	S	B2	2	84	43	6.1	0	0	121534	2826.37	140	7
71	BERTH LIGHT FITTING COMPL	N	D	3	0	0	0	0	0	0	1823.19	0	0
72	LAMP ELECTRIC TRAIN LIGHT	N	D	3	0	0	0	0	0	0	9.16	0	0
73	LAMP ELECTRIC TUNGSTUN FI	N	C2	5	200	481	28.9	0	0	7339	15.26	0	542
74	MINIATURE CIRCUIT 15AMPS	N	C1	1	0	336	0	0	0	75640	225.12	0	13
75	F.L.TUBE 20WATT	N	C1	1	0	1561	0	0	0	47117	30.18	200	1479
76	ELECTRONIC RECTIFIER CUM	N	A	3	12	2	2	4	0	398989	199494.5	0	14
77	LEAD COATED FLEX CONNECTI	N	C2	3	0	1141	0	0	0	52052	45.62	0	208
78	SET OF VALVE REGULATED LE	N	A	5	2	3	18	0	0	2810665	936888.3	0	1
79	EFT 110V	N	C1	11	50	18	4.3	0	0	12741	707.84	15	69
80	VRLA CELL OF 6V MONO BLKS	N	A	3	8	1	1.5	4	0	106392	106391.7	0	8
81	RAILWAY CARRIAGE FAN (110	N	C2	5	0	1	0	0	0	2690	2689.69	0	2
82	CARRIAGE FAN (110V X135D	N	A	1	700	72	1.2	0	0	261816	3636.33	200	278
83	BRACKET FAN 225 MM SWEEP,	N	C1	9	0	42	0	0	0	151966	3618.24	4	0
84	BRACKET TYPE RLY CARRIGAR	N	D	5	0	0	0	0	0	0	3226.95	0	0
85	T/L FAN CORBON	N	C1	3	40000	71216	21.4	0	0	400462	5.62	0	21784
86	CAPCITOR FOR A.C. CEILLIN	N	C1	5	4000	604	1.8	0	0	6674	11.05	3409	8205
87	SEALED COMPRESSOR 1TON	N	C1	2	12	21	21	0	0	190714	9081.61	12	11
88	WATER RAISING 3 PHASE HOR	N	C1	12	10	2	2.4	0	0	8576	4287.93	0	9
89	COOLING PILOT RELAY	N	C1	2	12	1	1	12	22	7754	7753.85	0	8
90	RUBBER PAD FOR AXLE PULLY	N	C1	4	300	2	0.1	500	0	632	316.03	0	414
91	STRN.ANN.COPP.COND.FOR JU	N	C1	4	200	23.3	1.4	0	0	18930	812.46	227	200
92	STAY ARM INSULATOR	N	B1	3	400	31	0.9	0	0	92547	2985.38	0	670
93	9 TONNE INSULATOR	N	D	12	360	1	0	0	689	3649	3648.53	0	0
94	ICTP MAIN SWITCH 30 AMPS	N	C1	1	100	126	15.1	0	0	74395	590.44	6	57
95	ICTP MAIN SWITCH 60 AMPS	N	C1	5	100	52	6.2	0	0	61700	1186.55	2	138
96	CONTACT WIRE SPLICE	N	C1	5	250	1	0	400	124	1496	1496.16	0	259
97	CATENARY WIRE SPLICE	N	C1	5	300	1	0	500	0	1145	1144.79	0	253
98	CATENARY WIRE ENDING CLAM	N	C1	5	200	10	0.6	200	0	7399	739.92	30	672
99	CONTACT WIRE DROPPER CLIP	N	C2	3	400	100	3	0	0	5892	58.92	70	255
100	HD BARE CU WIRE (FEEDER W	N	C1	11	300	73.85	3	0	0	56242	761.57	0	468.85
101	HD GROOVED COPPER CONTACT	N	B2	1	1	0.297	3.6	0	0	195467	658136.7	0	1
102	SS ROPE FOR 3:1 RATIO & P	N	B1	1	700	47	0.8	0	0	86526	1840.98	0	1043
103	GI BOLTS NUTS & LOCK NUT	N	C1	4	250	147	7.1	0	0	13856	94.26	78	400
104	CONTACT WIRE ENDING CLAMP	N	C1	5	300	150	6	0	0	36786	245.24	0	972
105	CONTACT WIRE SWIVEL CLIP	N	C2	5	480	450	11.3	0	0	5454	12.12	200	950
106	CONTACT WIRE PARALLEL CLA	N	B2	5	1200	900	9	0	0	212511	236.12	221	3352
107	CONTACT WIRE PARALLEL CLA	N	B2	3	500	125	3	0	0	34559	276.47	0	3500
108	LARGE SPAN WIRE ENDING CL	N	C1	5	60	30	6	0	0	53100	1770	20	70
109	REGULATING EQUIPMENT 3:1	N	C1	1	225	112	6	0	0	9720	8678.75	31	44
110	EARTH ROD ASSEMBLY	N	C1	3	18	2	1.3	81	0	34528	17263.8	0	12
111	GI BOLTS NUTS & LOCK NUT	N	C1	4	6000	4227	8.5	0	0	99086	23.44	429	15340
112	BRUSHLESS ALTERNATOR OF 2	N	A	3	10	1	1.2	9	3	300155	300155.4	0	2
113	BATTERY CHARGER 220/24V 1	N	C1	3	2	2	12	0	0	45207	22603.74	0	1

2.7 Performance of GSD Store For the Financial Year 2019-20:

April 2019- March 2020							
Month	Opg.Bal	Receipts	Cum.Receipts	Issues	Cum.Issue	Cls.Bal	TOR
APR '19	8.12	4.92	4.92	1.04	1.04	12	96.34
MAY '19	12	4.23	9.14	1.21	2.24	15.02	111.53
JUN '19	15.02	3.66	12.8	1.94	4.18	16.75	100.13
JUL '19	16.75	3.16	15.96	1.68	5.86	18.23	103.72
AUG '19	18.23	3.31	19.27	2.18	8.03	19.36	100.38
SEP '19	19.36	2.42	21.69	2.52	10.55	19.26	91.25
OCT '19	19.26	1.16	22.85	2.11	12.66	18.31	84.38
NOV '19	18.31	2.23	25.07	2.63	15.29	17.91	78.12
DEC '19	17.91	2.52	27.59	3.48	18.77	16.95	67.72
JAN '20	16.95	1.56	29.16	2.95	21.72	15.56	59.71
FEB '20	15.56	0.22	29.38	3.6	25.32	12.18	44.08
MAR '20	12.18	0.09	29.47	2.55	27.88	9.71	34.85

2.7 Performance of Scrap Yard For the Financial Year 2019-2020: (April 2019- March 2020)

S#	Description	Arising	Disposal	Value
	Ferrous			
1	a) Rails	0	0	0
2	b) MS Girder	0	0	0
3	c) Other P.Ways	0	0	0
4	d) Depot Ferrous(MT)	11518 14	10711 94	243521631.9
	2.Non-Ferrous			
5	Non Ferrous (MT)	180.89	166.979	19541378
	3.Rolling Stock			
6	a) Rolling Stock(Nos)	0	0	0
7	b) Wagons Nos	653	624	137035661
8	d) Weight of Wagon(b)	7801.806	7463 799	
9	e) Coaches Nos	0	0	0
10	f) Locos Nos	3	3	5199571
11	(g) Weight ofLocos(f)	2049	204.9	
	4.Others			
12	e) Crane Nos.	0	0	0
13	f) Misc. Depot (MT)	2239 158	2018813	67456075.5
14	g) Misc.Divn (MT)	545.123	545 123	11491447.27
15	b) UIC Trolley (MT)	979.28	732.62	16003129
16	UIC Trolley (Nos)	381	287	0
17	Total Qty.(without R/S)	23469.297	21844.174	500248893.7
18	Dispatch	7123.71	7123.71	186190711.5
	G/Total (without R/S)	30593 007	28967.884	686439605.1

CHAPTER-III**3.0 CRITICAL ANALYSIS & RECOMMENDATIONS:**

3.1 The actual staff strength of General Store Depot/Raipur is 118 against the sanctioned strength of 150. The requirement of staff has been assessed keeping in view present workload, outsourcing activities being carried out & proposed outsourcing of some activities.

Recently User Depot Module (UDM) for Store Deptt. has been introduced in some railways in Indian Railway and same should be introduced in SECR which will bring transformational changes from manual working to digital working with real time transactions and online information exchange among all stakeholders.

3.2 Assessment of Requirement of staff Category-wise at GSD/Raipur:-**3.2.1 Ministerial Category:**

General Section: There are 03 Ministerial staffs deployed in General Section(Para 2.4.1).

01 Ch. OS is dealing with Preparation of proposals, compliance, Floating of Tender, Comparative Statement, Briefing Note, TC, Agreement, Survey Sheet, and proposals for condemnation of furniture, Computers, Printer, M&P items, preparation of pay order, chasing HQ & Divn. Etc.

01 OS is dealing with Maintenance of 50MT & 30MT Rail Weigh Bridge, 1000Kgs. Cap Weighing Scale, 500 Kgs. Weighing scale, out sourcing works, , development work, Release of SD, EMD PG amount. Calibration record Misc. Correspondence, Monitor Misc. work in the section, feed back to officers as and when require etc.

01 OS is dealing with Preparation & Submission of bills for FLT, Lister truck, Hiring of vehicle, Material loading & Unloading and other Misc. contract, Officer contingent, Computer Contingent, Telephone bills, CUG ABC & D plan and other Misc. Work.

Receipt Section

01 Sr. Clerk is deployed for preparation of tally, typing of letter, preparation of R/Note, correspondence for claim and rejection cases etc(Para 2.4.4).

Ward No-2013

01 Sr. Clerk is deployed to assist In-charge of ward-2013 in various works of ward like Counting of materials at the time of Receipt with R/Note & I/Note, preservation of materials, stacking of materials etc. He is the only staff in Ward No-2013(Para 2.4.8).

CAS Section: There are 06 Ministerial staffs deployed in CAS Section (Para 2.4.11).

Central Accounting Section(CAS) deals with maintaining all the stock cards of the depot, numerical accounting and recoupment of stocks of the same classes of stores as are dealt with in the corresponding wards, maintaining receipt and registration of the requisitions placed by indentors, passing the vouchers to the numerical ledger posters direct instead of to a separate ledger section.

280630(2)/2021/O/o. SDGM/HQ/SECR

The Requisition Register (S. 1307), is also maintained in this Section.

01 Ch. OS (incharge) is dealing with maintaining CAS of Ward No-2010 (Stationary, Oil and Paints).

01 Ch. OS is dealing with maintaining CAS of Ward No.2014 & 2015 (clothing & General items).

01 Ch. OS is dealing with maintaining CAS of Ward No. 2012 & 2013 (C&W items).

01 Ch. OS is dealing with maintaining CAS of Ward No 2015 (Electrical, TRD, OHE items).

01 OS is dealing with maintaining CAS of Ward No. 2011 (S&T items)

01 OS is dealing with maintaining CAS of Ward No. 2013 (Coaching items).

Scrap Yard:

01 Hd Typist is utilized at Scrap yard for Preparation of lot register, preparation of I/Note, Preparation of Gate pass, other typing work(Para 2.4.13).

Sales Section:- There are 04 Ministerial staffs are deployed in Sales Section. (Para 2.4.14).

01 Ch. OS is dealing with publishing of auction catalogue, Misc. Correspondence to HQ on sales matter, Submission of various statement and reports, Arbitration cases, FDP and BSV extension, Preparation of Notes on scrap sales related matter.

01 OS is dealing with creation of lot, Arbitration and court cases, misc. correspondence etc.

01 OS is dealing with Sale tax activities of GSD Raipur.

01 Sr.Clerk is dealing with TCS, EMD related work, Misc. work.

Confidential Section:

01 Jr. Clerk is deployed as confidential assistant of Dy.CMM(S)/GSD/R and he is dealing with APAR records, D&A related works. (Para 2.4.19).

Establishment Section:

All Establishment related activities of five Store depots; RWSS/Raipur, GSD/NGP, DLS/NGP, GSD/BSP & Sr. DMM/BSP are centrally carried out at GSD/Raipur. Total 07 staff (05-Ministerials and 02 ADS) are deployed in Establishment section. 03 Ch. OS and 02 OS are dealing with Establishment works of Store section. (Para 2.4.20).

01 Ch. OS (Incharge of Establishment Section) is dealing with recruitment, settlement, Roster, Pension Adalat and review of service sheet, deal with confidential matter including Reservation.

01 Ch. OS is dealing with all types of NOC, PNM, D&A, Court cases, Pass and PTO section.

01 Ch. OS is dealing with Cadre, MCDO/PCDO, Non-selection, Selection, MPP, HQ reference, general correspondence and reauthorization.

01 OS is dealing with Bill Unit No. 04210(NG) and look after Quarter cell, PF

280630(2)/2021/O/o. SDGM/HQ/SECR

section and Grievances Cell.

01 OS is dealing with Bill Unit No. 04350(GAZ) and look after Quarter cell, PF section, Work related chartered Accountant regarding Income Tax and SBF Fund related matters.

Considering existing workload and based on discussion held with Supervisors, Work Study team proposed to deploy 07 more Ministerial staff [01 staff for each ward/section i.e. Ward No-2010, Ward No-2011, Ward No-2012, Ward No-2014, Ward No-2015, Non-Ferrous Section and General Section] for smooth operation of the Section/Ward.

Section/ward-wise Existing & Proposed Deployment of Ministerial Staff:-

Section/Ward		Ch OS	OS	Sr. Clerk	Jr.clerk	Hd. Typist	Sr.Steno
General Section	Existing	01	02	-	-	-	-
	Proposed	01	03	-	-	-	-
Receipt Section	Existing	-	-	01	-	-	-
	Proposed	-	-	01	-	-	-
Ward-2010	Existing	-	00	-	-	-	-
	Proposed	-	01	-	-	-	-
Ward-2011	Existing	-	00	-	-	-	-
	Proposed	-	01	-	-	-	-
Ward-2012	Existing	-	00	-	-	-	-
	Proposed	-	01	-	-	-	-
Ward-2013	Existing	-	-	01	-	-	-
	Proposed	-	-	01	-	-	-
Ward-2014	Existing	-	00	-	-	-	-
	Proposed	-	01	-	-	-	-
Ward-2015	Existing	-	00	-	-	-	-
	Proposed	-	01	-	-	-	-
CAS Section	Existing	04	02	-	-	-	-
	Proposed	04	02	-	-	-	-
Sales Section	Existing	01	02	01	-	-	-
	Proposed	01	02	01	-	-	-
Scrap Section	Existing	-	-	-	-	01	-
	Proposed	-	-	-	-	01	-
Non-Ferrous Section	Existing	-	00	-	-	-	-
	Proposed	-	01	-	-	-	-
Conf. Section	Existing	-	-	-	01	-	-
	Proposed	-	-	-	01	-	-
Estt. Section	Existing	03	02	-	-	-	-
	Proposed	03	02	-	-	-	-
Dy. CMM office	Existing	-	-	-	-	-	00
	Proposed	-	-	-	-	-	01
Total Min. Staff	Existing	22					
	Proposed	29					

Thus, total requirement of Ministerial staff for GSD/R comes to 30 including proposed 01 Steno at Dy. CMM office against total sanction of 37 to carry out the existing workload. Hence, 07 vacant posts [04-OS, 01-Sr.Clerk, 02-Jr.Clerk] of Ministerial category are found surplus and should be surrendered from GSD/Raipur.

3.2.2 CDMS/DMS category:

General section

01 CDMS in General section is the overall incharge of GSD (Para 2.4.). He has to look after Time office management, Reports/ feedback to higher authority, depot maintenance works, infrastructure work etc. Audit reply, Daily work distribution of Group-D staff/ gang, Maintenance of T&P/M&P, Internal communication of office circulars, Proposal for procurement of office assets, T&P, M&P, Major & Minor Works programme, collection of materials from other depot.

Receipt Section

01 DMS in Receipt Section deals with Collection of materials, Inspection of received consignment for quality and quantity, Preparation of receipt note, Clearance of rejection and claims cases, Ensuring the compliance of quality policy and quality objective & Any other work assigned by superiors. (Para 2.4.4).

Ward No-2010

01-CDMS is deployed in Ward-2010, having 118 types of store materials(Para-2.6.1). He deals with accountal of receipts, stocking and preservation of stores, Issue and distribution of materials, Entry of details of receipts and issues in IMMIS, Ensuring the compliance of quality and quality objectives etc. (Para 2.4.5).

Ward No-2011

01-CDMS is deployed in Ward-2011, having 161 types of store materials(Para-2.6.1), assisted by 03 ADS. (Para 2.4.6).

Ward No-2012 & 2013

01-DMS is looking after the Ward No-2012 and Ward No-2013(Para 2.4.7 & 2.4.8) having 88 (Para-2.6.3) and 194 (Para-2.6.4) types of store materials respectively. *The Work Study team proposed to deploy 01 CDMS for Ward No-2013 for smooth operation of the Ward.*

Ward No-2014

There are 105 types of store materials stored and maintained in Ward No-2014(Para- 2.6.5) and total 01-CDMS and 03-ADS are deployed in this section(Para- 2.4.9).

Ward No-2015

There are 113 types of store materials stored and maintained in Ward No-2015 (Para- 2.6.6) and total 01-CDMS and 02-ADS are deployed in this section(Para- 2.4.10).

Petty Repair Shop(PRS)

Petty Repair Shop(PRS) deals with details of Maintenance work for depot vehicles and other infrastructure, Scrap wagon door opening, nut bolt cutting etc. *The Work Study team proposed to deploy 01 CDMS for Petty Repair Shop for smooth operation of the Shop.*

Scrap Yard:

There are 02 CDMS and 01 DMS are deployed in Scrap Section. (Para 2.4.7 & 2.4.13). Total Scrap arising in the financial year 2019-20 is about of 30593 Matric Tonne, Disposal of material is about 28968 Matric Tonne of money value 69 Crore (Para 2.7).

01 CDMS is the in-charge of scrap yard, also working as CDMS rolling stock, Segregation of scrap and formation of lots, conducting survey committee, wherever necessary and putting up recommendations to competent authority for acceptance, Delivery of sold lots, Ensuring the compliance of quality policy and quality objective & Any other work assigned by superiors.

01 CDMS is working as CDMS/Receipt/Scrap yard, responsible for accountal of scrap, Segregation of scrap and formation of lots, Delivery of sold lots, preparation of analysis report for non-ferrous item, audit reply related to scrap yard etc.

01 DMS is deployed in Scrap yard. He deals with accountal of scrap, Segregation of scrap and formation of lots, Delivery of sold lots, monitoring of unloading work from railway wagons etc.

The Work Study team proposed to deploy 01 more DMS for Scrap Yard for smooth operation of this section.

In addition to above, the Work Study Team proposed deployment of 01 CDMS(Co-ordination) who will coordinate with all sections/wards, other Departments, Division, HQ and Officers to achieve better efficiency to carry out the existing workload of GSD Raipur.

Section/ward-wise Existing & Proposed Deployment of CDMS/DMS:-

Section/Ward		CDMS	DMS
Co-ordination	Existing	00	
	Proposed	01	
General Section	Existing	01	-
	Proposed	01	-
Receipt Section	Existing		01
	Proposed		01
Ward-2010	Existing	01	
	Proposed	01	
Ward-2011	Existing	01	
	Proposed	01	
Ward-2012	Existing	-	01
	Proposed	-	01
Ward-2013	Existing	00	
	Proposed	01	-
Ward-2014	Existing	01	
	Proposed	01	
Ward-2015	Existing	01	
	Proposed	01	
PRS Section	Existing	00	
	Proposed	01	
Scrap Yard	Existing	02	01
	Proposed	02	02
Total CDMS/DMS	Existing	10	
	Proposed	14	

Hence, total requirements of CDMS/DMS comes to 14 against Sanctioned of 14.

3.2.3 Technicians category:

02 Technicians/Carpenters are utilized at Time Office to deal with details of Time keeping, outgoing materials, entry of gate pass, entry of outsiders etc. They open and close the safe and have to remain in his office until all keys are received and locked in safe. And also they are utilized for Carpentry activities at GSD as and when required(Para 2.4.2).

The Work Study team revealed that as the Carpentry related works is a non-core activity which is not related with train operation and safety, the Work Study team proposed to outsource the activity of Carpentry and redeploy the live men (02 Carpenters) in suitable Ward/Section who are being utilised at Time office and redesignate them accordingly. ***And thereafter resultant surplus of 02 posts of Carpenters may be surrendered.*** It is also suggested that the activity of Time office may be managed by 02 ADS under control of CDMS (Co-ordination)/General Section.

Total 08 staff (02-MCM, 02-MLD, 02-Tech. and 02-Painter) are deployed in PRS section(Para 2.4.12). Petty Repair Shop(PRS) section deals with details of Maintenance work for depot vehicles and other infrastructure, Scrap wagon door opening, nut bolt cutting etc. 02 MLD are also utilized for driving of 02 departmental Truck as and when required. 02 Painters are utilized for numbering and marking Standard Colours in accordance with I.R.S. Specification No. at Iron & Steel Bars and Section and other painting works of depot etc.

Total 03 MCM is required against existing on roll of 02 MCM to carry out Petty Repair Work of Elect., RS and C&W equipments.

Thus, Work Study team found justified requirement of 09 Technicians against total sanction of 11. Hence, 02 posts of Carpenter are found surplus and should be surrendered from GSD/Raipur.

3.2.3 Asst. Depot Store(ADS)category:

General Section:- Total 05 ADS are deployed in this section(Para 2.4.1).

01 ADS is utilized for Preparation of forecast demand, Signature verification for issue of materials to various consumers, preparation of Requisitions, cleaning and disinfection services of section.

01 ADS is utilized for General works related to general section cleanness, movement of file, letters etc.

01 ADS is utilized for Preparation of Duty pass and Booking memo for the staff. Signature verification for issue of materials to various consumers and other Group D activities.

01 ADS is utilized as Keyman i.e. collection of keys of all wards and godowns, closing/sealing /opening of Main Gate, Offices.

01 ADS is utilized for maintenance of Library of GSD.

The Work Study team found justified of utilization of 05 ADS in General Section.

280630(2)/2021/O/o. SDGM/HQ/SECR

Dispatch Section:- Total 02 ADS are deployed in this section(Para 2.4.3).

Total 02 ADS are deployed in Dispatch Section deals with Maintenance of Dispatch Register, Receipt Register and distribution of Dak in division, other Unit & HQ, Sending Dak through Post Office.

The Work Study team found justified of utilization of 02 ADS in Dispatch Section.

Receipt Section: Total 03 ADS are deployed in this section(Para 2.4.4).

01 ADS is utilized for cleaning & sweeping activities section, counting of receipted materials & stacking of materials etc.

01 ADS is utilized for Chasing of materials from parcel office, counting of materials, sending of materials in ward, other works related to section.

01 ADS is utilized for Preparation of Gate pass, Preparation of DS/8, closing, sealing and opening of section, distribution of letters in wards and sections.

The Work Study team found justified of utilization of 03 ADS in Receipt Section.

Ward -2010 : Total 03 ADS are deployed in this section(Para 2.4.5).

There are 118 types of store materials stored and maintained in Ward No-2010 and total 03 ADS are deployed in this section. They are utilized for Opening, closing & sealing of ward, Counting of materials at the time of Receipt with R/Note & I/Note handling of materials, to assist in preservation of materials, rolling of paint drum, stacking of materials, sealing of ward and cleaning activities etc.

The Work Study team found justified of utilization of 03 ADS in Ward-2010.

Ward -2011 : Total 03 ADS are deployed in this section(Para 2.4.6).

There are 161 types of store materials stored and maintained in Ward No-2011 and total 03 ADS are deployed in this section. They are utilized for Opening, closing & sealing of ward, Counting of materials at the time of Receipt with R/Note & I/Note handling of materials, to assist in preservation of materials, rolling of paint drum, stacking of materials, sealing of ward and cleaning activities etc.

The Work Study team found justified of utilization of 03 ADS in Ward-2011.

Ward -2012 : Total 01 ADS is deployed in this section(Para 2.4.7).

There are 88 types of store materials stored and maintained in Ward No-2012 and total 01 ADS is deployed in this section. He is utilized for Cleaning & sweeping work daily related to ward, Opening, closing & sealing of ward & handling of materials.

The Work Study team proposed to deploy 02 more ADS in this Ward for Counting of materials at the time of Receipt with R/Note & I/Note handling of materials, preservation of materials, rolling of paint drum, stacking of materials etc.

Ward -2013 : At present 01 ADS is deployed in this section(Para 2.4.8).

There are 194 types of store materials stored and maintained in Ward No-2013 and at present there is no ADS is deployed in this section.

The Work Study team proposed to deploy 02 more ADS in this Ward for Opening, closing & sealing of ward, Counting of materials at the time of Receipt with R/Note & I/Note handling of materials, to assist in preservation of materials, rolling of paint drum, stacking of materials, sealing of ward and cleaning activities etc.

Ward -2014 : Total 03 ADS are deployed in this section(Para 2.4.9). There are 105 types of store materials stored and maintained in Ward No-2014 and total 03 ADS are deployed in this section. They are utilized for Opening, closing & sealing of ward, Counting of materials at the time of Receipt with R/Note & I/Note handling of materials, Gate Pass preparation, to assist in preservation of materials, rolling of paint drum, stacking of materials, sealing of ward and cleaning activities etc.

The Work Study team found justified of utilization of 03 ADS in Ward-2014.

Ward -2015 : Total 02 ADS are deployed in this section(Para 2.4.10). There are 113 types of store materials stored and maintained in Ward No-2015 and total 02 ADS are deployed in this section. They are utilized for Opening, closing & sealing of ward, Counting of materials at the time of Receipt with R/Note & I/Note handling of materials, Gate Pass preparation, to assist in preservation of materials, stacking of materials, sealing of ward and cleaning activities etc.

The Work Study team proposed to deploy 01 more ADS in this Ward for smooth operation of the Ward-2015.

CAS Section: Total 02 ADS are deployed in this section(Para 2.4.11).

01 ADS is utilized for File movement and record keeping & other Misc. work. And another 01 ADS is utilized for Cleaning and Sweeping activity of CAS section.

The Work Study team found justified of utilization of 02 ADS in CAS Section.

Scrap Yard: Total 21 ADS are deployed in this section.

01 ADS is utilized for CRSL and DS-8 clearance.

01 ADS is utilized for Registration of DS-8 and all Misc. work.

03 ADS are utilized for Assisting to CDMS/RS, CDMS/Elect. And CDMS/C&W for all works related to Scrap Yard.

03 ADS are utilized for Housekeeping activities.

01 ADS is utilized for Works related to incoming of wagons at Yard.

12 ADS are utilized for Loading and unloading of scrap materials and shifting as and when required.

Total Scrap arising in the financial year 2019-20 is about of 30593 Metric Tonne, Disposal of Scrap materials is about 28968 Matric Tonne having money value 69 Crore (Para 2.7).

The Work Study team observed that unloading of scrap materials of 2100MT from Railway wagons is carried out through outsourcing of manpower at scrap yard. The Work Study team proposed to outsource the activity of Loading/unloading/House keeping and live posts may be utilized in other section/Shop/Office of GSD as per need. At present total 15 ADS are utilized for Loading/ unloading and House Keeping of scrap materials and *hence after implementation of outsourcing, these 15 posts of ADS would be surplus which should be surrendered.*

280630(2)/2021/O/o. SDGM/HQ/SECR

Sales Section: Total 02 ADS are deployed in this section(Para 2.4.14).

01 ADS is utilized To assist in various works of section, filing work, submission of challan, housekeeping work.

Another 01 ADS is utilized for Pay office related work, housekeeping work.

The Work Study team found justified of utilization of 02 ADS in Sales Section.

Special Gang: Special Gang Staffs are utilized in all wards and sections as and when required. Total 18 ADS are deployed in this section(Para 2.4.15).

10 ADS are utilized for Collection of materials from other depot, collection of materials from parcel, loading & unloading of materials at the time of receipt and issue, depot maintenance work, other misc. work.

08 ADS(Ladies) are utilized for Housekeeping activities.

The Work Study team found justified of utilization of 18 ADS in Spl. gang Section.

50 MT Rail Weigh Bridge:-

01 ADS is utilized as operator of 50MT Rail weigh bridge(Para 2.4.15), which is found justified.

The Work Study team found justified of utilization of 01 ADS at 50 MT Rail Weigh Bridge.

30 MT Rail Weigh Bridge:-

01 ADS is utilized as operator of 30MT Rail weigh bridge(Para 2.4.16), which is found justified.

The Work Study team found justified of utilization of 01 ADS at 30 MT Rail Weigh Bridge.

Non Ferrous Godown:- Total 02 ADS are deployed in Non-Ferrous Godown (Para 2.4.18).

02 ADS are utilized to assist In-charge of ward at the time of receipt of non-ferrous scrap, segregation of non-ferrous scrap, preparation of non-ferrous lot, maintenance of registers, closing/sealing/opening of godown, which is found justified.

The Work Study team found justified of utilization of 02 ADS at Non Ferrous Godown.

Establishment Section: There are 02 ADS deployed in this section(Para 2.4.20).

01 ADS is utilized to assist in Bills preparation, T.A, Settlement, Quarters related activities, P.F. related works and other typing works.

01 ADS is utilized for Housekeeping works and assisting other misc. works of section.

The Work Study team found justified of utilization of 02 ADS at Establishment Section.

Time Office:- The Work Study team proposed to deploy 02 ADS in Time Office in place of existing deployment of 02 Carpenters.

Section/ward-wise Existing & Proposed Deployment of ADS:-

Section/Ward	Existing	Proposed
General Section	05	05
Dispatch Section	02	02
Receipt Section	03	03

280630(2)/2021/O/o. SDGM/HQ/SECR

Ward-2010	03	03
Ward-2011	03	03
Ward-2012	01	03
Ward-2013	01	03
Ward-2014	03	03
Ward-2015	02	03
CAS Section	02	02
Scrap Yard	21	06
Sales Section	02	02
Special Gang	18	18
50 MT Rail Weigh Bridge	01	01
30 MT Rail Weigh Bridge	01	01
Non-Ferrous Section	02	02
Establishment Section	02	02
Time Office	00	02
Total	72	64

At Present, total 72 ADS are deployed against total sanction of 82 at GSD/ Raipur. However considering existing workload and proposed outsourcing, requirement of ADS comes to 64. Introduction of lifter, battery driven vehicles, cranes etc. has reduced the workload of ADS drastically. The activity of Loading/Unloading and House Keeping activity at scrap yard should be outsourced. Hence, 18 posts of ADS (vac-10) are identified surplus and should be surrendered from GSD/R.

3.2.4 Record Sorter:

There is 01 sanctioned posts of Record Sorter which is lying vacant. As the post of Record Sorter comes under diminishing category, the Work Study team recommended for surrendering 01 vacant posts of Record Sorter from GSD.

3.2.5 General Asst. Store(Peon):

There are 04 sanctioned posts of General Asstt Stores (Peon) out of which 02 are vacant. 02 Peons are deployed in General Section for performing Group D activities which is sufficient to carry out the workload. Hence, the Work Study team recommended for surrendering 02 vacant posts of General Asst. Stores (Peon) from GSD.

3.2.6 B/Peon: There is 01 B/Peon working under Dy. CMM, utilized for Group D activities is found justified.

3.3 Analysis of Expenditure in Existing Carpentry, Loading/ Unloading & House Keeping Activities in Scrap Yard and proposed outsourcing of Carpentry, Loading/ Unloading & House Keeping Activities & Financial Savings:

(A) Expenditure in Existing system of working (Departmental staff cost):

(i) Expenses on Departmental staff for Loading/ Unloading & House Keeping Activities at Scrap Yard:

Total On Roll staff (ADS) under Scrap Section utilized for Loading/ Unloading & House Keeping	Average Cost per month	Total Yearly expenses per year (approx.)
15	657255	7887060/-

(ii) Expenses on Departmental staff for Carpentry Activities at GSD:

Total On Roll staff Carpenter	Average Cost per	Total Yearly expenses per
-------------------------------	------------------	---------------------------

280630(2)/2021/O/o. SDGM/HQ/SECR

	month	year (approx.)
02	142160	1705920/-

Total Departmental Expenses Per Year (approx.) [(i)+(ii)] = 78,87,000 + 1705920
= 95,92,920

(B) Expenditure in Proposed Outsourcing of Loading/ Unloading & House Keeping Activities of Scrap Yard and Carpentry activity of GSD:

(i) Approximate Expenditure on Outsourcing/Contractual staff :

At present total 15 ADS are being utilized for loading, unloading and House Keeping activity at Scrap yard and 02 Carpenters are utilized at Time Office and Carpentry activities at GSD. Hence, it is assumed that bare requirement of Contract's worker will be same as number of manpower utilized in departmental work.

S#	Category	Total No.	Per day Rate of Labour as per Minimum wages	Total Cost per year (Approx)
1.	Un-skilled Labour	15	361/-	15x361x365= 1976475/-
2.	Skilled Labour (Carpenter)	02	446	02x446x365= 325580/-
Total cost of contractor's staff		-	-	2302055/-
3.	Add Contractors remuneration @ 10%	-	-	230206/-
4.	Add GST @ 12% on above			303871/-
Per Year Cost				2836132/-

Total Outsourcing Expenses Per Year (approx.)= 2836132/-

(ii) Expenses on Materials used in maintenance/repair work will remain same i.e. in departmental or outsourcing.

(C) NET SAVINGS Per year (Approx):

$$\begin{aligned}
 \text{Net Savings} &= (A) - (B) \\
 &= 95,92,920/- - 28,36,132/- \\
 &= 67,56,788/-
 \end{aligned}$$

Thus, Annual Recurring Savings of Rs. 67,56,788/- per annum can be achieved after implementation of Outsourcing of Loading/ Unloading & House Keeping Activities of Scrap Yard and Carpentry Activities of GSD and it is economical to surrender of 15 posts of ADS from Scrap Section and 02 Carpenter from GSD. The live men should be redeployed at other units as per requirement.

3.4 Summary of Sanction, Present & Proposed staff strength of Store of GSD/Raipur:

S#	Category	Sanction	Actual	Proposed	Proposed for Surrender
1	Ch OS	7	9	07	00
2	OS	21	8	17	04
3	Sr. Clerk	4	3	03	01
4	Jr Clerk/Typist	3	1	01	02
5	Head Typist	1	1	01	00
6	Sr.Steno	1	0	01	00
7	CDMS	10	8	10	00
8	DMS	4	3	04	00
9	M.C.M	3	2	3	00
10	Carpenter	2	2	0	02
11	Painter	2	2	2	00
12	M.L.Driver -I	2	2	2	00
13	Fitter	2	2	2	00
14	A D (Stores)	82	72	64	18
15	G A (Stores)	04	02	02	02
16	Record sorter	1	0	00	01
17	B/Peon	1	1	1	00
Total		150	118	120	30

3.5 RECOMMENDATIONS & SUGGESTIONS:

On the basis of above observations and critical analysis, the following recommendations and suggestions are made:

3.5.1 Considering the existing work load and as per details given in Para 3.2 to 3.4, total requirement of staff of GSD/R comes to 120 out of total sanctioned of 150 posts.

Thus, 20 vacant posts [*07 Ministerial, 01 Record Sorter, 10 ADS and 02 AGS*] are *identified as surplus from GSD Raipur and should be surrendered in phase-I.*

3.5.2 To bring savings in manpower costs and improving efficiency, it is recommended that some non-core activities of GSD Raipur like **Carpentry, Loading/ Unloading & House Keeping** activity should be outsourced.

Therefore after outsourcing of **Carpentry, Loading/ Unloading & House Keeping** activities, *02 posts of Carpenter and 08 posts of ADS deployed for this activity would be surplus and should be surrendered in Phase-II from GSD Raipur.* The live men (staff) should be redeployed at other units as per requirement.

3.5.3 User Depot Module (UDM) for Store Deptt. should be introduced in GSD which will bring transformational changes from manual working to digital working with real time transactions and online information exchange among all stakeholders.

Suggestions:

3.5.4 All Wards should be equipped with computers, printer and LAN connection to achieve paperless working.

3.5.5 All Gr.D staff under Store Department may be re-designated as Multi-Tasking Staff (MTS) on the plea that they can be utilized for multi-task activities at different Sections/Wards.

CHAPTER-IV**4.0 FINANCIAL EVALUATION & RESULTS:-****Phase-I:Savings due to surrender of 20 identified surplus posts:- (Based on Existing Workload)-**

Design.	Scale of pay	Level	No. of Post to be surrendered	Mean pay	Cost per Month per staff (Mean Basic pay+ D.A. @ 17%)	Total cost per month (in Rs.)	Total cost per year (in Rs.)
Ministerial	35400-112400	6	07	73900	86463	605241	7262892
ADS/AGS/Record Sorter	18000-56900	1	13	37450	43817	569621	6835452
TOTAL			20				140,98,344

Thus, recurring savings to the tune of Rs. 140,98,344 say Rs. 141 lakh Per annum can be achieved due to surrender of 20 identified vacant surplus posts from GSD/Raipur and surrender memorandum to be issued by WPO/GSD/R/SECR.

Phase-II: Savings due to surrender of 10 surplus posts after outsourcing-

Design.	Scale of pay	Level	No. of Post to be surrendered	Mean pay	Cost per Month per staff (Mean Basic pay+ D.A. @ 17%)	Total cost per month (in Rs.)	Total cost per year (in Rs.)
Carpenter (Tech.-I)	29200-92300	5	02	60750	71080	142160	1705920
ADS	18000-56900	1	08	37450	43817	350536	4206432
TOTAL			10				59,12,352

Thus, recurring savings to the tune of Rs. 59,12,352 say Rs. 59 lakh Per annum can be achieved due to surrender of 10 identified surplus posts from GSD/Raipur and surrender memorandum to be issued by WPO/GSD/R/SECR.

-X-X-