



भारत सरकार (Government of India)

रेल मंत्रालय (Ministry of Railways)

रेलवे बोर्ड (Railway Board)

No. 2019/CE-I/Misc./6/CRS (dev & Impl.)

New Delhi, dated 11.11.2019

Principal Chief Engineers

All Zonal Railways.

विषय- Implementation of Web-Based Application - CRS Sanction Monitoring System

1. IT application - **CRS Sanction Monitoring System**, developed by CRIS, has been launched by Railway Board (ME) on 05.11.2019 in the presence of CCRS. The above application is available on IRCEP portal (www.ircep.gov.in).

Presently, following two modules have been developed:

- a. Sanction for minor works for level crossings (manning, upgradation, closure, new level crossing, shifting), LHS, minor bridges.
- b. Sanction for increase of speed over turnouts & loop lines.

Instructions for use of above e-application, login IDs & initial password for Commissioners' of Railway Safety, and workflow for above two modules are enclosed. Login IDs of Sr DENs/DENs and DyCEs are same as of TMS.

2. Railways are advised to process CRS sanction for above works on e-application with immediate effect.
3. Other modules i.e., (i) opening of new lines and electrification (ii) increase in sectional speed (iii) increase in speed of existing trains/ rolling stock

(iv) condonation of infringements to IRSOD and (v) pipeline crossing works are under development and shall be launched in due course of time.


21.11.19
(प्रेम सागर गुप्ता)

कार्यकारी निदेशक /सिविल इंजी.(जी)

रेलवे बोर्ड

Copy forwarded for information to:

1. The Chief Commissioner of Railway Safety, Office compound of DRM/NER, Ashok Marg, Lucknow.
2. The Commissioner of Railway Safety, All Circles.

Instructions for use of Application

CRS Sanction Monitoring System

- This application is available on IRCEP Portal (www.ircep.gov.in) as IR-CRS.
- At present processing of cases to obtain CRS Sanction for Minor Works related to Level Crossings (Manning, Closure, New LC, Shifting, Upgradation), LHS, Minor Bridges and Raising of Speed on Turnouts & Loop Lines are covered.
- **User Login IDs**
 - Login IDs of Sr DEN/DENs and Dy CEs are already there in the existing TMS System. The same will be used for this application also.
 - Login IDs of CCRS & CRS have been created and the same is attached as **Annexure-1**.
 - Initial Password for these IDs has been set with suffix '1' to the respective login IDs.
 - This initial password must be changed after initial login.
 - Designation (for Display) corresponding to each user ID has been defined which can be changed by the user through Update profile option in the menu.
- Process flow for initiation, processing and sanction of proposals is enclosed separately as **Annexure -2** (for Minor Works) & **Annexure -3** (for Raising of Speed on Turnouts & Loop Lines).

Annexure-1

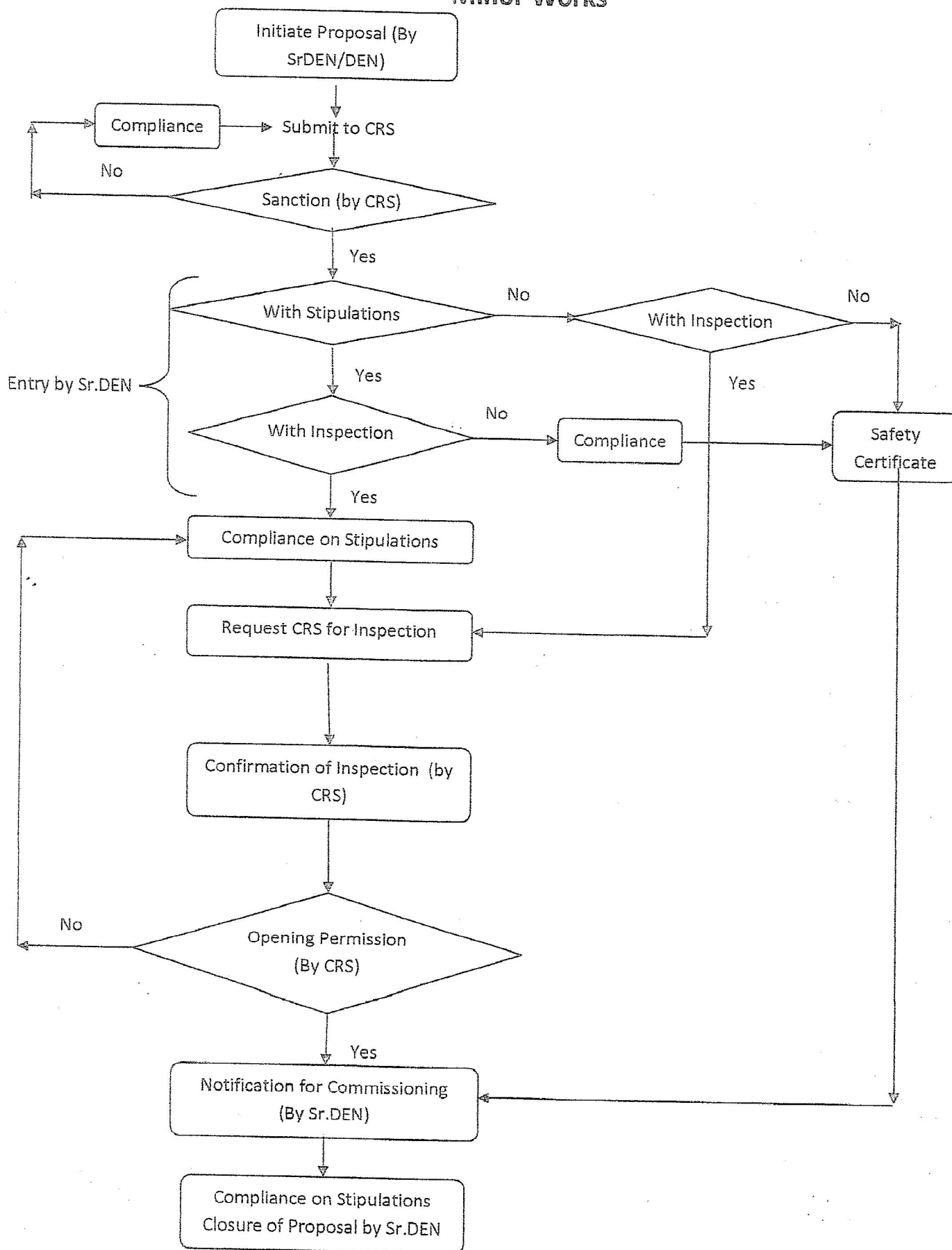
Login IDs of CCRS and CRS

For

CRSSanction Management System Application

| CRS Circles | Railways | Login ID | Password |
|------------------------------|---|----------|----------|
| CCRS | INDIAN RAILWAYS | ccrs | ccrs1 |
| CENTRAL CIRCLE | CENTRAL RAILWAY, WEST CENTRAL RAILWAY KONKAN RAILWAY | crscc | crscc1 |
| EASTERN CIRCLE | EASTERN RAILWAY EAST CENTRAL RAILWAY. | crsec | crsec1 |
| NORTHERN CIRCLE | NORTHERN RAILWAY DELHI METRO RAIL CORPORATION | crsnc | crsnc1 |
| NORTH EASTERN CIRCLE | NORTH EASTERN RAILWAY NORTH CENTRAL RAILWAY | crsnec | crsnec1 |
| NORTHEAST FRONTIER CIRCLE | NORTHEAST FRONTIER RAILWAY METRO RAILWAY KOLKATA | crsnfc | crsnfc1 |
| SOUTHERN CIRCLE | SOUTHERN RAILWAY SOUTH WESTERN RAILWAY | crssc | crssc1 |
| SOUTH CENTRAL CIRCLE | SOUTH CENTRAL RAILWAY. | rsscc | crsscc1 |
| WESTERN CIRCLE | WESTERN RAILWAY NORTH WESTERN RAILWAY | crswc | crswc1 |
| SOUTH EASTERN CIRCLE | SOUTH EASTERN RAILWAY EAST COAST RAILWAY SOUTH EAST CENTRAL RAILWAY. | crssec | crssec1 |

Minor Works



Speed Raising on Turnouts & Loop Lines

