

## SOUTH CENTRAL RAILWAY

Headquarters Office  
Mechanical Branch  
Rail Nilayam  
Secunderabad.

No.SCR-HQ0Mech(MG)/04/2019

Date: 24.07.2024.

**Executive Director/Heritage  
Railway Board**

**Sub:** Updation of lists HERITAGE ARTEFACTS of Indian Railways.

**Ref:** 1.This office letter to Heritage/RB even dated 25.04.2024.  
2.RB's Ir No.2020/Heritage/Artefacts, dtd 07.06.2024

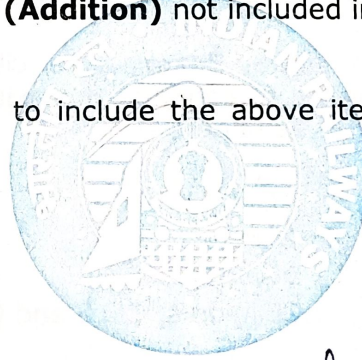
\*\*\*

With ref. to (1) of above subject letter, the heritage inventory pertaining to SCR is reviewed and updated details submitted to RB on 25.04.2024.

As advised by RB vide ref(2), updated list of Artefacts of Heritage web page is verified and found that one item of SCR i.e **Bell - Public addressing System (1925) at Krishna Station (Addition)** not included in the updated list.

Hence it is requested to include the above item in the list of Artefacts of Heritage web page.

DA: As above



(M.Laxminarayana)

**Dy.CME/Plg & Secy to PCME (L/A)**

## SOUTH CENTRAL RAILWAY



General Manager's Office,  
Secunderabad – 500 025.

No. G.157/Misc/Heritage/ Corres Vol.III

Date 14.10.2019

**Joint Director/Heritage,**  
Railway Board,  
New Delhi.

Email:heritage.cell.rb@gmail.com

Sub: Details of Rail Museums, Heritage Parks, Galleries  
and list of artefacts.

Ref: Your Office letter No.2019/Heritage/ ZRHC/Inventory  
dated 04.09.2019.


<><><>

The detailed information in connection with the subject referred above, are  
furnished below:-

1. The Rail Museum of S.C.Railway is situated at Kacheguda of Hyderabad Division. The area of Rail Museum, Kacheguda is 254.71 sq.mtrs.
2. The person responsible for maintaining the Gallery is Shri Henry Norfolk, Station Master (medically decategorized) working as Caretaker of Rail Museum, Kacheguda.
3. The details indicating the Items available at Rail Museum, Kacheguda and list of Photographs are enclosed.
4. Photographs of Heritage items available at various locations alongwith descriptions are enclosed.

This is for kind information please.

Encl: As above

  
(एन. श्रीनिवास रेड्डी/N.Sreenivas Reddy)  
उप महाप्रबंधक/सामान्य/ Dy.General Manager/Genl

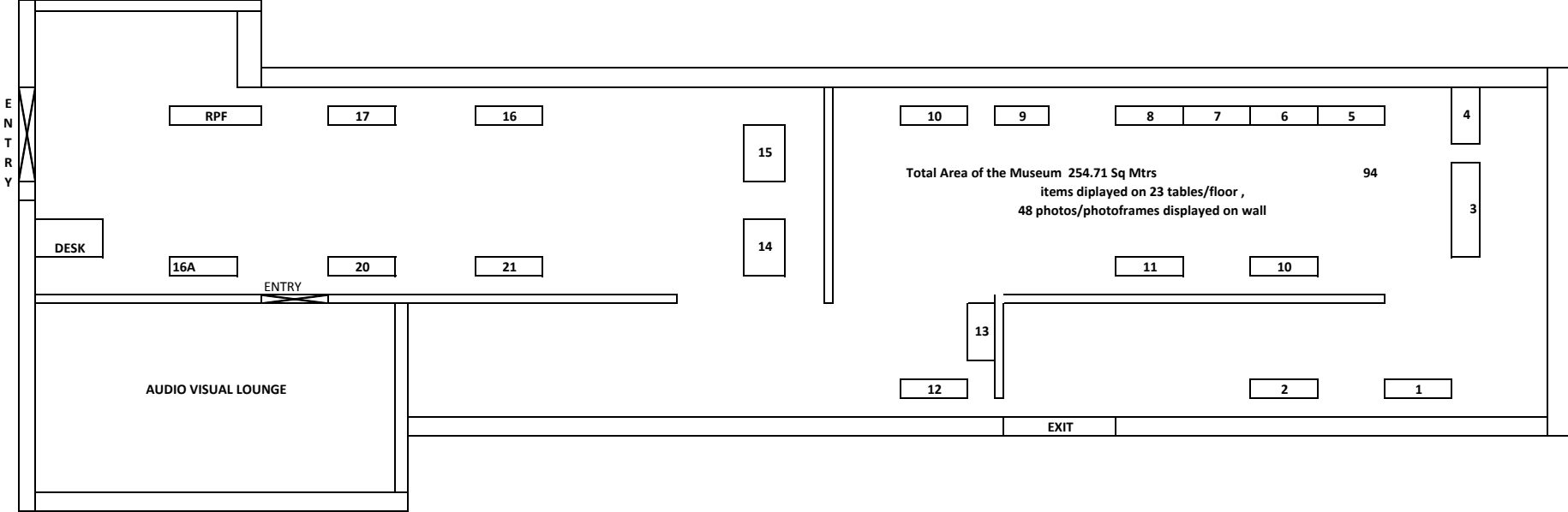
## Details of items available at Rail Museum /KCG

Sl.No	Description of materials	Quantity
1.	Brass Emblem of Southern Railway	01 No.
2	Brass Emblem Madras and Southern Railway	01 No.
3	Signal Flag (Red & Green inaugural flag 2 nos with one box) with one box.	02 No.
4	Wooden Box in different Badges (Brass)	13 No.
5	Diesel Locomotive model WDG4 12003	01 No.
6	Wooden photo model of Steam Locomotive with Wagon XP 22370	01 No.
7	Photo type Diesel Engine WDGH 12020	01 No.
8	WDS 4B shunting Locomotive 19524 (Taken by Sr.DEE/HYB)	01 No.
9	Wooden Casnub Bogie	01 No.
10	Steam Pressure Gauge Box	01 No.
11	Hand Bell at SELU station Brass 1899 AD	01 No.
12	Proto model of Electric Loco WAM 4-2200	01 No.
13	Proto model of Electric Locomotive (Brass color) 22514 (Taken by Sr.DEE/HYB)	01 No.
14	Stone Block 1893 with stand	01 No.
15	Plaque of First Godavari Bridges (1900-1997)	01 No.
16	First Godavari Bridge/RJY model no. 1 (Taken by Sr.DEE/HYB)	01 No.
17	Second Godavari Bridge/RJY model no. 1 (Taken by Sr.DEE/HYB)	01 No.
18	Third Godavari Bridge/RJY model no (Taken by Sr.DEE/HYB)	01 No.
19	Display Wooden photo stand Revolving (Signals)	01 No.
20	Old Impulse Clock 1952	01 No.

Sl.No	Description of materials	Quantity
21	Telegraphic system 9Morse)	01 No.
22	Brass Eagle frame	01 No.
23	Lever interlocking frame kfg by Saxby 7 Farmer Ltd. London year 1899.	01 No.
24	Water pot Zinc	01 No.
25	Line clear with Token pouch	01 No.
26	Hand Signal Lamp	01 No.
27	Copper Hammer with wooden handle 500 grms.	01 No.
28	Caliper -outer	01 No.
29	Double end spanner made in England	01 No.
30	Single end spanner made in England	01 No.
31	N.S. Rly. Mirror with frame 1035-1940	01 No.
32	Documents by Personnel Branch 9Laminated frames)	05 No.
33	Difference type of tickets used in IR.	01 No.
34	150 years of photo frame	01 No.
35	NGSR metal Stamps Manwat Road	02 No.
36	Ticket puncher	02 No.
37	N.S. Railway Magazine- 1946	01 No.
38	Mobile Ticket Conter	01 No.
39	Sema Phore Signal UQ Complete set (St.DEE/M/HYB)	01 No.
40	Cast iron bench with wooden frame	01 No.
41	Lamp Frafme	01 No.
42	Bell jar Alarm with Brass (Taken by SSe/Works/KCG)	01 No.

<b>Sl.No</b>	<b>List of Photographs</b>	<b>Quantity</b>
43	Lord & lady Curzon going in trolley during their visit to Hyderabad Deccan in 1902	01 No.
43.1	Lord and lady Willington at Nampally Railway platform during their visit to Hyderabad Deccan 1933	01 No.
43.2	<b>His Excellency shaking hands with H.E.H. the Nizam 1938</b> Lord Linlithgow shaking hands with the Nizam VIIth during his visit to Hyderabad Deccan in 1938.	01 No.
43.3	<b>Their Excellencies being introduced to principal Noblemen</b> Lord and lady Linlithgow being introduced to noble man during their visit to Hyderabad Deccan in 1938.	01 No.
43.4	<b>Inspecting the Guard of Honor at the station</b> Lord Linlithgow inspecting the Guard of Honour at Railway station during his visit to Hyderabad Deccan in 1938	01 No.
43.5	<b>Smt. Indira Gandhi the then Prime Minister of India</b> laying foundation stone for Bibinagar- Naddikude New Railway line on 7 <sup>th</sup> April 1974	01 No.
43.6	Review fo Gauge conversation works on the Nandyal- Giddalur section Shri P.V. Narasinha Rao, hon'ble minister of India during his visit to Nandyal on 6 <sup>th</sup> July 1995.	01 No.
43.7	<b>Arrival of Their Excellencies at Hyderabad Railway station</b> Awating arrival of lord and lady Linlithgow at Hyderabad Railway station during their visit to Hyderabad December 1938.	01 No.

LAYOUT OF RAIL MUSEUM AT KACHEGUDA HYDERABAD DIVISION



## Heritage Items at Hyderabad Division

### Sir Alec @ Rail Nilayam



"Sir Alec" Steam Loco, built in the year 1907 by Kitson & Co, Leeds was a prized possession of the Barsi Light Railway Narrow Gauge system.  
Heritage display at South Central Railway Headquarters office, Secunderabad

### Sir Alec @ Rail Nilayam



"Sir Alec" Steam Loco, Illuminated



## Heritage Items at Hyderabad Division

### Kacheguda Railway Station



Hundred and three years old Station building, constructed in 1916, by the Nizam of Hyderabad Asaf Jah VII, this Station was the Headquarters of the then [Nizam's Guaranteed State Railway](#)

### Kacheguda Railway Station



**Illuminated View**



## Heritage Items at Hyderabad Division

### Kacheguda Railway Station



**Illuminated View**

### Kacheguda Railway Station

#### Station beautification with Cheriya Paintings



**Cheriya Painting is a stylized version of Nakashi Art, rich in the local motifs peculiar to Telangana. They are at present made only in Hyderabad, Telangana**

## Heritage Items at Hyderabad Division

### Kacheguda Railway Station



Station beautification with Cheriya Paintings

### Rail Museum @ Kacheguda



Heritage Conservation at Rail Museum Kacheguda

# Heritage Items at Hyderabad Division

## Rail Museum at Kacheguda



### Heritage Conservation at Rail Museum Kacheguda

## Palace on Wheels @ Kachiguda



**“Place on Wheels” MG Train Coaches restored by LGDS  
in 2015 placed at Kacheguda**

## Heritage Items at Hyderabad Division

### MG Locomotive in Hyderabad Bhavan



**Illuminated Locomotive at Hyderabad Bhavan  
(DRM/HYB, Administrative building)**

### WPCTLAC – NWR – 91565 – 1991 Built (used on Palace on wheels)



**Meter gauge AC library coach NWR 91565 which was running in Palace on wheels train, was brought from N. W. Railway. Its interior, air conditioning was done in LGDS in 2015.**

# Heritage Items at Hyderabad Division

## 1. Heritage exhibit at Kacheguda station - Meter gauge AC Library coach No.91565



## Heritage exhibit at Hyderabad Bhavan – Meter gauge steam loco no.YP 2508



**Class - YP**

**Date retired – 10.03.1998**

**Wheel Configuration: 4-6-2**

**Gauge – MG**

**Shed based – Ratlam, WR**

**Year Built - 1948**

**Builder – Tala Elec. & Co.**



## Heritage Items at GY Division

Replica at Gooty Station



## Heritage Items at Nanded Division

### MG Locomotive at Aurangabad Railway Station



**MG Locomotive YP – 2590. This Locomotive was serving Express & Passenger train on erstwhile MG sections of South Central Railway**

## MG Locomotive at Aurangabad Railway Station

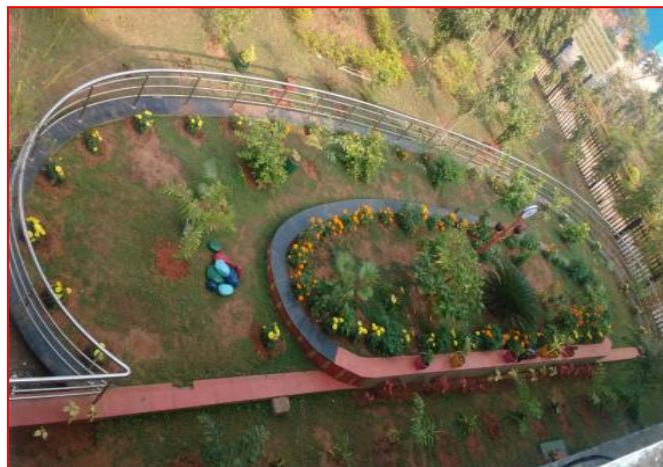


**Illuminated Locomotive**

## Heritage Items at Secunderabad Division (Park at RDM)



## Garden at COA (Kakinada) depot:

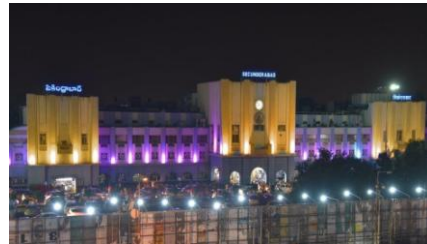




## Secunderabad Railway Station



During Day



Illuminated

## Secunderabad Railway Station



Station beautification with Cheriya Paintings

### 1886 NIZAM'S SALOON



Wooden bodied 4-wheeler inspection carriage (Saloon) was built in the year 1886, for the Nizam's Guaranteed State Railway.  
Was restored by LGDS in December 2006

Replica at Top of Secunderabad Division (SanchalanBhavan)



## Heritage Items at Lallaguda Workshop

### **CWM Lallaguda Administrative building**



**This building is more than hundred years old.  
Being preserved as Original by LGDS**

### **Bronze Mahatma Gandhi Statue**



**Bronze Mahatma Gandhi statue manufactured by Foundry Staff of Lallaguda  
during 1955**

### JOHN MORRIS FIRE ENGINE (1914 MAKE)



John Morris Fire Engine, housed at National Rail Museum@New Delhi, is maintained by Carriage Workshop, Lallaguda.  
Recently complete Overhauling of Engine was done.  
Took part in Vintage Car Rally at New Delhi and Secured Challenger Trophy

### FIRE ALARM BELL - 1925



Bronze bell 1925 manufactured at Lallaguda Workshop and weighing 83 kg for mass alert during exigencies



**Heritage MG Steam Crane 35 Tonnes (SCR S-3508)**



**Brief:**

The MG breakdown steam crane of 35 Tonnes capacity was manufactured by North Eastern Railway Workshop / Izzatnagar in the year 1976. The tare weight of crane is 70 Tonnes & that of match truck is 15 Tonnes.

This was lying unused at Pakala junction in Guntakal – Dharmavaram section, as the section was converted to BG. The crane parts were dismantled at site, moved on BFRs, reassembled in this workshop and kept on pedestal in August 2010.

**Last POH – UBLS 01.06.1993**

**'A' class Exam – LGD – 08.03.2007**

**Type of Boilet – Smoke tube boiler**



### **1920 BUILT WAGON**



**1920 year BG wagon built by Birmingham Railway Carriage & Wagon Company (BRC&W), Smethwick, England.  
Was restored by LGDS in 2007**

### **MG – AC SALOON (SC CTAC-150)**



**1970 year built by ICF was utilized by GM / South Central Railway in the Metre gauge section of S C Railway.  
After Gauge conversion, this was stabled at Purna, unused and was in a dilapidated condition. This was restored by LGDS in Feb'2009**

## HERITAGE MG STEAM CRANE 35 TONNES (SCR- S-3508)



This was manufactured by North Eastern Railway Workshop/Izzat nagar in the year 1976. The tare weight of crane is 70 t & that of match truck is 15 t. Restored in August 2010.

Heritage exhibit at Rail Nilayam – Narrow gauge steam loco no.N-11



Class – BS

Gauge – NG

Year Built – 1905

Date withdrawn from Service - 1979

Shed based – Solapur, CR

Builder – Kitson& Co., Leeds UK

Wheel config: 4-8-4



## Heritage Items at GTL

Replica at DRM / Guntakal Office



## Heritage Items at BZA

